

Golf Course Trades

GOLF SUPERINTENDENT'S MONTHLY BUYING GUIDE

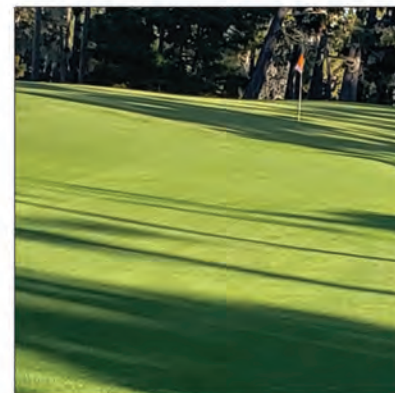
ROOKIE YEAR

*An Assistant
Superintendent's Story*

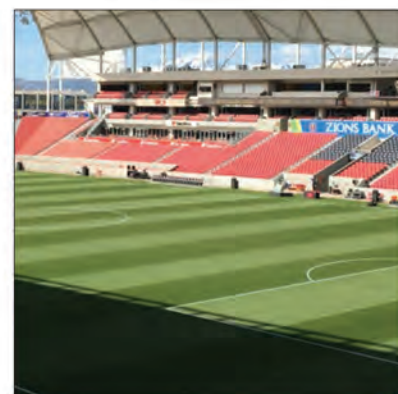


The Next Generation of Turf Nutrition

Thank you to all our Loyal Customers
– New and Old!



"STS products work great
on Greens and Fairways!"
Lupe Orozco – Superintendent
– Poppy Hills Golf Course



"Congratulations to Rio Tinto Stadium
– 2019 MLS Field of the Year!"
Dan Farnes – Head Groundskeeper
– Real Salt Lake



"Thought you would appreciate seeing this"
Matt Muhlenbruch – Hillcrest Country Club



"I use the entire STS product line, with Pure K+ being
my go-to product for hardening off turf.
I can see and feel the difference".
Matt Greiner – Head Groundskeeper
– San Francisco 49ers



"My favorite apps are the Plant Health, Microbial Soil
Conditioning and Hardening off Formulations"
Zachary Longenecker – Head Groundskeeper
– Las Vegas Raiders



"Prepping for the Olympic
Selection Committee"

Discover the difference Pre-Digestion can make in your program.
Visit STSTurf.com or call 831-224-3179



2016 Toro Grounds Master
4500D 4WD; 9ft cutting width;
ROPS; Cool Top T4
2448 Hours



2015 Toro Reel Master 5510
4WD; 11 Blade DPA; Rear Roller
Brushes; ROPS; Cool Top; Lights



2011 Toro Reel Master 6500D
11-Blade DPA; Light Kit
3289 Hours
\$11,500



2014 John Deere Terrain Cut 7400
ROPA; 3WD; Side Shift Decks;
Lights
\$13,900



2014 Toro Reel Master 3100D
Sidewinder
3WD; 32-Inch 8 Blade DPA Reels;
ROPS; Lights; Rear Roller Brushes



2000 Toro Reel Master 5-gang
Hydraulic Pull Frame
\$15,500



2015 Toro Greens Master 3150-Q
3WD; 11-Blade DPA Cutting Unit;
Wide Wiehle Rollers; ROPS; Light Kit
1332 Hours



2014 Jacobsen Eclipse 322
Hybrid Gas
15 Blade Reels; Led Light Kit
\$11,900



2013 Smithco Tournament Ultra
Greens Roller with Trailer
Lights
\$5,500



2000 Ryan Mataway
Verticutter



2011 Turfco Widespin 1540
Tow Behind
9HP Vanguard Engine;
Wired Remote
\$6,500



2014 Toro SandPro 5040
(Repowered/New Engine
3WD; Front Flex Blade; Rear Tooth
Rakes; Spring Rake; Light Kit
2038 Hours

Check out our website www.Globalturf.com for a full list of in stock inventory

Phone: (352) 588-3092

Toll-Free: (866) 588-3092

globalturf.com

COMING SOON

The MowerShop@
GlobalTurf
EQUIPMENT SALES & RENTALS

Authorized Service Center

TORO

STIHL

VENTRAC

FLEXSTAKE® FG 1800.348.9839
www.flexstakegolf.com



The Mow-Over Marker
That Can Walk On
Water & Be Cross-Cut
On A Fairway



This is the ultimate in mow-over
course marking stakes. Two O
style rings on hinge seals dirt
and water out of the anchor.
Sealed stake floats if thrown
in water hazard. Suitable for
all course markings.

FLEXSTAKE GOLF®



CORE SOLUTIONS BY NORDIC PLOW.COM®



Ask why Toro Distributors overwhelmingly
recommend the Core Solutions by Nordic Plow
over all other brands! 888-662-PLOW (7569).
MADE IN THE USA!

Biofeed® Turf



GRAYHAWK GOLF CLUB
36 Holes. Tour Tested. Open to Everyone.



As a turf manager in the
Southwest for the last 27 years,
and the Director of Agronomy
at Grayhawk Golf Club for the
last 20 years, we are continuing
to fine-tune our nutritional
program on greens. We have
tremendous success with
weekly applications of Biofeed
GT Pro, Super-C, Micro-H, and
Micro-Fe as our base program,
producing very resilient turf with great color and
consistent growth. Biofeed products are very cost
effective and easy to work with, and produce some of
the finest playing surfaces in the Southwest.

Ernie Pock
Director of Agronomy

Professional Turf Products
Powered By
Amino-Carbon Technology®



SUPER-C™
Soil & Plant
Management
System



GT PRO™
Greens & Tees
Foliar



MICRO-Fe™
Liquid Iron



MICRO-H™
Foliar
Micro-Nutrient
Blend

— Distributor Opportunities Available. Contact customer@biofeed.com —

Manufactured by: Biofeed Solutions, Inc. • Glendale, AZ • 602-BIO-FEED (246-3333) • www.biofeed.com



2010 Jacobsen LF3400 1167 Hours
Call for Price



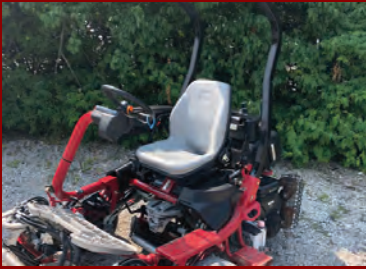
2014 Cushman Turf Truckster w/ 1540 Top-dresser 1600 Hours **Call For Price**



2015 Toro 3320 1400 Hours (Have 2)
GREAT SHAPE \$18,000



2017 Jacobsen GKIV w/ groomers 332 Hours **\$18,000**



2014 Toro 3150 1300 Hrs.
\$18,000



2014 John Deere 2500B Diesel 2000 Hr.
(Have 2) **\$9500**



2013 Toro 3150 11 Blade DPA
Low Hours **\$16,000**



Quality Pre-Owned Turf & Grounds Maintenance Equipment

WE TAKE CARE OF YOUR NEEDS



**If you don't see it listed, give us a call
.....we probably have it!!!!**

2014 Toro 4700 2000 Hours
Toro 648 Pro Core Aerator
2011 Toro 3040 Trap Rake
Toro 5200 Pro Sweep
Toro 3280 (Have 2) 5 & 6' Deck
Toro Mid Duty Low Hours
Lely Spreader \$3000
2017 Club Car 500 Hauler
2017 Jacobsen Truckster w/dump bed



2014 John Deere 8700 4WD 8 Blade
(Have 2) starting at **\$16,000**



2013 Toro 5510 4WD CrossTrak 11 Blade
\$18,000



2016 Toro 5510 11 Blade 1250 Hours
Great Shape!



2012 Toro 5410 8 Blade \$16,000
Call for Price



2014 Toro 3420 11 Blade DPA
\$18,000



Jacobsen LF570 2WD (Have 2) 400 & 500 hrs. **Call for Price**



2015 Toro 3550 **\$20,000**



2014 Jacobsen LF570 (Have 3)
Starting **\$16,000**



2014 Toro 4500D 2200 Hours
Call For Price



2017 Jacobsen 322 Eclipse 15 Blade
Call for Price



2014 Toro 3500 Sidewinder (Have 5)
Call for Price



2017 Jacobsen AR522 800 Hours
\$28,000



2005 Toro 5200 ProSweep
\$5,200



2008 Pro Core 864
\$13,000



2015 Cushman Gas Beverage Cart
Call for Price

**731-363-1400 • 901-317-7369 • futuresgolfequipment@gmail.com
Located in West Tennessee**

Table of Contents



Tobacco Road: The Greatest Thrill Ride in Golf	8	News	18
Everything You Wanted to Know About Conifers, but Were Afraid to Ask	10	Testing Aeration Methods	22
Biofeed Spotlight	12	Quest Products Spotlight	24
Soil Technologies Delivering “The Goods” for 30 Years	14	Rookie Year: An Assistant Superintendent’s Story	26
		TRADES PLACE	27-28



Golf Superintendent’s Monthly Buying Guide

Published by
Trades Publishing Company, Inc.
PO Box 1364, Crossville, TN 38557

For advertising information
call 931-484-8819 or
email adrep@thetrades.com



CEO/Founding Publisher

James “Tim” Wilson

Managing Editor

Sharon Scott Wilson
SharonINK@thetrades.com

Sales Manager

Marla Carroll
Marla@thetrades.com

Marketing Associate

Kimberley Wyatt
Kimberley@thetrades.com

Creative Director

Carrie Vandever
golf@thetrades.com
news@GolfTrades.com

Contributing Writers

Linda Parker
Jay Flemma
Jeff Shelley
Andrew Penner

Accounting

Elaine Swicker
accounting@thetrades.com



We welcome all contributions
(submit to golf@thetrades.com),
but we assume no responsibility for
unsolicited material. No portion of
this publication can be reproduced
in whole or in part without prior
permission.

The Golf Course Trades, established 1990, is a tabloid
buyer’s guide publication targeted specifically at the golf
course superintendent. The Golf Course Trades offers
display advertising, a categorized supplier directory, press
releases, and extensive product reviews for heavy equip-
ment. GolfCourseTrades.com is an extension of the maga-
zine with a complete supplier guide for everyday use on the
course. The Golf Course Trades currently mails to 18,955
golf course superintendents and product vendors in the
United States. A digital copy of the publication is online as
well at GolfCourseTrades.com.

Copyright© 2020 The Golf Course Trades. All rights
reserved.

REPLACEMENT ENGINES AND **ENGINE** **INSTALLATION KITS**



ALL KITS GUARANTEED

SO YOU ARE 100% SATISFIED



UNLIMITED TECHNICAL SUPPORT

WITH EVERY COMMERCIAL-GRADE SOLUTION



WE SERVICE ALMOST EVERYTHING

*INCLUDING MOWERS, UTILITY CARTS, SKID LOADERS
TURF AND MAINTENANCE EQUIPMENT*



FULFILLMENT IN 1 BUSINESS DAY

ON IN STOCK ITEMS

REPO  **POWER**

800.700.9501

WWW.REPOWERSPECIALISTS.COM

INFO@REPOWERSPECIALISTS.COM

Tobacco Road

The Greatest Thrill Ride in Golf

by Jay Flemma



His name was Mike Strantz, but everyone just called him Maverick, and he was on his way to becoming one of the pre-eminent golf course architects of this or any generation before oral cancer took his life in 2005 at the young age of 50.

Tall and strapping with a bushy moustache and ten-gallon hat, Strantz – a gifted sketch artist and painter who used watercolors and sketches as his plans – and his associate Forrest “Fuzzy” Fezler were incendiary talents. And in the short decade or so in which he and Fuzzy were working together, Strantz built iconic masterpieces in the shadow of America’s greatest golf treasures.

First he designed Caledonia and True Blue, two Myrtle Beach-area courses that catapulted to the top spots in the already golf-rich Grand Strand. Since opening in 1994 and 1995 respectively, the pair have been the most

sought after rounds and highest rated courses of the over 100 designs that pepper the area.

Architects have designed in the region for almost 90 years. Strantz reset the bar on his first attempt.

Later came Monterey Peninsula Country Club’s Shore Course, adjacent to both Cypress Point and Pebble Beach and widely considered as the architectural equal to both, a proper rejoinder to Alister Mackenzie and Jack Neville’s timeless classics. We profiled MPCC in this magazine here: (<https://golfcoursetrades.com/california-dreamin-at-monterey-peninsula-country-club/>)

Yet Strantz’s most indelible masterpiece – indeed his magnum opus – is Tobacco Road, a stone’s throw from venerable Pinehurst, but every bit as memorable and architecturally brilliant as Ross’s fabled No. 2. Called

by Golf Magazine “The Most Adventurous Golf Course in America,” no course arouses passions in golfers like “The Road,” as it’s known to its friends.

“Mike’s greatest genius here was that he had an uncompromising vision and he stuck too it. He was not afraid of controversy or of building the best strategies that the land would suggest to him,” explained course owner and operator Mark Stewart, your textbook example of a warm, welcoming North Carolinian. “Mike wasn’t afraid of blind shots or challenging people to get outside their comfort zone, and although he put self doubt in your swing, he also created monumental excitement.”

With an ocean of sandy soil as far as the eye can see as his canvas, Strantz took his already arresting visuals to the nth degree, creating wide, yet serpentine fairways swerving wildly around

expansive waste areas and towering sand mounds. Part Pine Valley for its vast acres of sandy washes, and part Prestwick for its numerous blind drives and approaches, the result is a course that shows us the edges of the golf design map. It’s terra incognita, a world apart from what golfers had seen for decades: rich in risk-reward options, while hearkening back to the strategies and design of some of the world’s most ancient strongholds of golf.

“I started in April of 1998, and was there through the whole building process, from before grassing,” explains Head Superintendent Morgan Stephenson, a lifer in the golf industry. His uncle was a superintendent at Eagle Crest Golf Club in Raleigh, so Stephenson has been working on golf course grounds crews since he was 15. “I went off to college at North Carolina State for their turfgrass management program and during one of my summer internships, I met Strantz at Wild Dunes.”

Strantz saw that Stephenson had not only an interest in turfgrass, but architecture as well, and as we all know, that’s the quantum leap one must make to become a top-echelon Head Superintendent.

“Before meeting him, I didn’t think about architecture, but I sure do now,” Stephenson recalled, chuckling.

Their friendship blossomed, and Stephenson followed Strantz to Virginia, where he worked grounds crew and later became assistant superintendent at Royal New Kent and Stonehouse, Strantz’s Williamsburg-area designs. Soon afterwards,



when Strantz inked the deal to build Tobacco Road, Stephenson was a natural fit; it was a sort of homecoming.

“It’s a significant contribution to golf design, and as the years have rolled on people have begun to appreciate the greatness of it. All the holes are unique – there’s no repetition of holes found at any other golf course,” said Stephenson. “Tobacco Road stands alone – at least in the USA. It’s Golden Age architecture in Strantz’s inimitable artistic style: 3-dimensional, using a lot of vertical movement in the earth, and with multiple playing angles giving golfers many options to play a hole.”

Nowhere is that truer than at Tobacco Road’s par-5s. All four are showstoppers, beginning with the first. Standing on the opening tee box, you must drive your ball between two gigantic grass-covered mountains. The “Pillars of Hercules” the monoliths are called, and when you’re 200 yards away trying to hit a golf ball between them, they might as well be the Rock of Gibraltar.

“That’s no gentle handshake or easing you into the round. Mike wanted your attention on the first tee. He wanted to see how you’d respond,” Stewart noted, with a knowing smile.

The normal response is AYKM: “Are You Kidding Me??!!” I’m supposed to hit my tee shot where??!! I’ve never seen anything like this!”

That’s the greatest compliment you can pay a golf course architect.

Then there’s the bathtub green at the par-5 13th, perched high on a hill and surrounded by deep, narrow bunkers etched into the shaggy hillside.

“It’s a totally natural green site. It looks extreme, but that’s one of the more minimalist holes on the course” Stephenson observed. “That hole is all about placement. You don’t need length there, just proper positioning.”

“That’s the one place on the golf course where my partner Tony Woodell and I asked Mike, ‘are you sure about this?’ and he responded ‘Absolutely!’” Stewart added. “The minute we saw the finished product, we not only knew he was right, we were really excited.”

Then there’s Strantz’s favorite, the short but dangerous par5 11th, which winds its way around deep bunkers, including a monstrous, seemingly bottomless greenside bunker, that gets deeper the further it extends along the green.

“I’d like the take the pros there and have them play that hole for \$1,000,000 each of their own money,” Strantz confided in an interview with your author shortly before his passing. The depth perception gets harder the deeper the pin placement as well. That would be something to see.” It would also be fascinating to see the pros tackle the myriad blind shots. Several holes are not only blind off the tee but semi-blind into the green as well. Some greens curve around enormous sand dunes, others are recessed into the dune’s face, and still others are almost completely obscured by the dunes. This gave rise to a poem called “The Tobacco Road Haiku,” (author unknown).

Where’s the freakin’ green? Dude, I have no idea... Check the yardage book.

(That’s five-seven-five, for those of you scoring at home.)

But blind shots are scary in name only. And there’s a secret to beating them at Tobacco Road or any other Strantz course.

“Go over the mound,” Forrest Fezler instructed Your Author many years ago. “Mike’s fairways are concealed behind the mound,” he finished with a grin.

The fairways are actually quite wide, and this concealed width opens up shot options for players, making the course playable and enjoyable by all skill levels...if they hit their fairways.

Strantz brought Prestwick and Pine Valley to the daily public golfer; it’s impossible to overstate that achievement. Along with the Bandon Dunes complex, Tobacco Road is the most important public course to open in this country since Sawgrass in 1980. It is also a quintessential match play course as fortunes of the round change from shot to shot, exactly what any truly great course evokes - and the road features such options and potential swings on each and every hole.

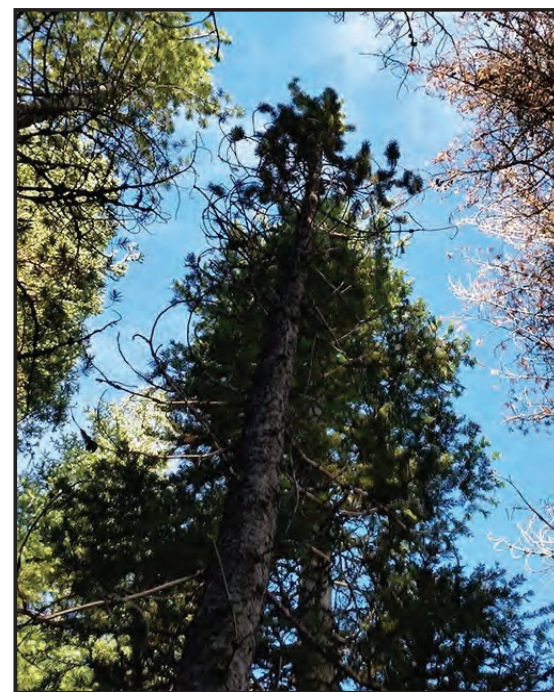
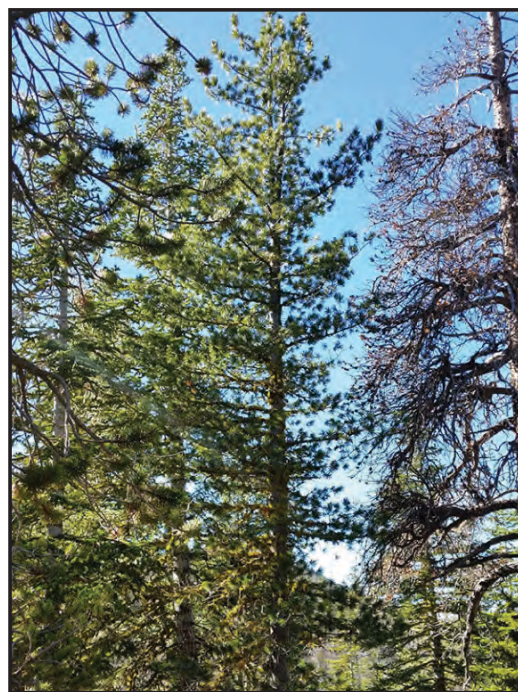
“Mike’s vision was singular. To generate that design and then build it on the ground was a huge achievement,” Stephenson said. “It’s a proper throwback to Golden Age architecture while being truly unique artistically. The Road may hearken back to other courses, but nothing looks like The Road.”

When not reporting live from major sports championships or researching golf courses for design, value and excitement, multiple award-winning sports writer Jay Flemma is an entertainment, Internet, trademark, and banking lawyer from New York. His clients have been nominated for Grammy and Emmy awards, won a Sundance Film Festival Best Director award, performed on stage and screen, and designed pop art for museums and collectors. Twitter @JayGolfUSA



Everything You Wanted to Know About Conifers, but Were Afraid to Ask

by Joe Doccia Director of Research and Development at Arborjet, Inc.



Conifer, literally “cone-bearing”, a reference to a family of gymnosperm tree that reproduce by means of “naked seeds” (the literal meaning of gymnosperm). You are no doubt familiar with a number of species, particularly common at this time of year, Balsam and Fraser firs are cut for Christmas trees. We may think of conifers as evergreens, but this is not always the case. Deciduous gymnosperms include *Ginkgo biloba* (Ginkgo or Maidenhair tree), *Metasequoia glyptostroboides* (Dawn Redwood), *Larix decidua* (larch) and *Taxodium distichum* (Bald Cypress). Conifers are interesting from their anatomy and physiology as well. For example, some are referred to as resinous or non-resinous conifers. Resinous conifers are trees that have groups of parenchyma cells (living cells) in the sapwood that form a resin duct. Examples

are pines and spruces. When injured, resin is pitched from the tree, a natural wound response. Non-resinous conifers do not have pre-formed resin ducts in their sapwood, but may have them in their bark. An example of a non-resinous conifer is the Eastern hemlock (*Tsuga canadensis*).

Let's have a closer look at conifer anatomy from the inside out. The very center of the tree (which may or may not be the middle of the tree) is pith, which supports the tree in the first year of its life. The surrounding sapwood or xylem is made up strictly of tracheids. In hardwood (i.e., angiosperms) trees, sapwood is made up of vessels and tracheids. Vessels form a straw-like tube, whose function is to move water and dissolved solutes from root to shoot. Vessels are larger and depending on tree species, they can be from 20 to 200 microns across

(big). In contrast, tracheids are small, restrictive vascular tissue of only 3 to 10 microns across (small). The size of this internal vasculature has a consequence on the rate of the movement of sap in trees. In 1839 two researchers working independently, one in Germany (Hagen) the other in France (Poiseuille) developed an equation that expressed the rate of flow through a vessel with respect to its diameter. To settle the argument of who was the first, it became known as the Hagen-Poiseuille equation. The equation states in essence, that the rate of flow

increases with increasing vessel radius, raised to the 4th power. Got it? Good... hold that thought!

As the sapwood ages in trees, it becomes non-conductive. The older sapwood functions to support the tree and is storage for waste (such as resinous terpenes and phenolic) materials. This changes the sapwood chemically and physically and older sapwood is termed heartwood. This heartwood may be red in color. The role of heartwood is structural: it keeps a large tree standing. The sapwood

FOUR THINGS NEED TO WORK TOGETHER

- (1) Root absorption (and root pressure)
- (2) water sticks together
- (3) pores open to air
- (4) an ambient vapor deficit

in mature conifers may be as wide as 2" (5 cm) thick, which is functional in conducting liquids.

How then does sap (that is, water and solutes) move in trees? In order to answer this question, we need to address the environment in which the tree is growing. For one thing, there needs to be adequate (available) soil moisture. Fine, non-woody roots absorb soil moisture and dissolved minerals. How does liquid then move from the root plate to the top of a tall tree, say a giant redwood (*Sequoia sempervirens*)? Four things need to work together. These are (1) Root absorption (and root pressure) plays a role, (2) the characteristic that water is polar (carries a charge) so it sticks together, and (3) that small pores on the underside of the foliage (needles) are open to air and (4) an ambient vapor deficit occurs so water moves out from the leaf. A vapor deficit requires that the air surrounding the small pores in the leaf (stomates) is drier than the internal leaf environment. The sap rises in the tracheid column sticking together by hydrogen bonding (the hydrogen has a "+" charge and the oxygen, a "-" charge). We all know that opposites attract!

So if moisture is lost through a vapor deficit when there is ample soil moisture but less moisture in the air, what happens in northern winters when the ground freezes and

roots can't take up water, but cold winds blow? And why then do most conifers hold onto their foliage through the winter months? It turns out that conifers have a strategy. The stomates (tiny pores) are surrounded by guard cells, which close the opening when there is an internal moisture deficit to protect trees from dessicating. Further, the foliage (needles) is thin (stealthy) and covered with a protective layer of wax, which prevents water loss when cold winds blow. But why hang on to foliage all year long? Well, there are a number of reasons. One is that conifers have living storage cells (called parenchyma) that are only a single thickness wide (hardwoods have multiple layers of parenchyma for storage, but that is another story). So carbohydrate storage is limited within the tree. The liability of retaining an organ (leaves) through the wintry months is also an opportunity. Soils are not always frozen in the winter. Sometimes they thaw, particularly in early spring, when hardwoods are dormant, conifers that retain their needles can photosynthesize that is, they are making their own food when other trees are still inactive.

Used with Permission: <https://arborjet.com/2019/12/19/everything-you-wanted-to-know-about-conifers-but-were-afraid-to-ask/>



DAKOTA

800.477.8415 / www.dakotapeat.com

Spread light, heavy,
wet or dry,
nothin' is easier
to use or adjust
than a **DAKOTA**
Turf Tender.
Period.

**SAVE 25% or more on your
Topdressing time and labor Cost
Guaranteed...Contact Your
Local Dealer for
A FREE Demo Today.**

NE OH / NW PA / NW WV
AG-PRO GOLF
855-GOLF-909
www.ShearerEquipment.com

SC / NC / TN / GA / AL / MS
GREENVILLE TURF & TRACTOR
800-485-8873
www.greenvilleturf.com

ILLINOIS, INDIANA, MICHIGAN, WISCONSIN
J.W. TURF, INC.
888-959-8873
www.jwturf.com

SE FL / HILTON HEAD / CARIBBEAN
EVERGLADES EQUIPMENT GROUP
888-746-8873
www.evergladesequipmentgroup.com

IDAHO * MONTANA * N & S DAKOTA * NEVADA
C & B OPERATIONS, LLC
800-923-9242
www.deerequipment.com

CALIFORNIA
TORRENCE'S FARM IMPLEMENT
760-398-4141
www.torrences.net

LA / SOUTH MS / SOUTH AL / NORTH FL
BEARD EQUIPMENT COMPANY
MOBILE, AL / OCALA, FL
800-848-8563
www.beardequipment.com





Biofeed Solutions

Restoring the Earth's Soils and Water

Biofeed cares about our planet's delicate ecosystem. Our products are proprietary, enzyme-based treatment solutions formulated to work in harmony with nature. Many competing products are chemical based. Our products promote a pro-biological growing environment to increase water, mineral and nutrient absorption. Biofeed products are university and field-tested to build healthy, living soil. Working with nature – instead of against it – produces a lot of return for a small investment.

The Man Behind the Biofeed Plan

Mr. Dan Lee has spent his entire adult life studying biology, chemistry and bio-technical applications since 1986. During 30 years of field practice, Dan has learned much about how the earth's ecosystems co-exist to support life. Nature's original design suffers from environmental neglect and usage of various chemicals. Biofeed creates environmental products which repair the earth's soil and water.

Amino-Carbon Technology®

Thirty-plus years of field research and development led to the creation of Biofeed's unique Amino-Carbon Technology® (ACT). Biofeed products with ACT help to reduce sodium toxicity, balance water biology, and improve root and soil interactions. ACT is proven effective over a period of more than three decades through agricultural, aquaculture, environmental, and turf-grass university studies world-wide.



Professional Turf Products Powered by ACT

Biofeed products deliver easy to use liquid products to the turf manager that promote nutrient solubility and availability. All nutrients must be soluble for absorption and delivered to the plant either through the leaf or root uptake. This requires the nutrient to be complexed with the proper balance of bio-available compounds that the plant favors. This is what we have achieved with our Amino-Carbon Technology (ACT). Field studies of Biofeed Professional Turf products reveals they address:



Water Absorption: Dissolve extreme mineral and sodium deposits. This in turn reduces water consumption since there is less water run-off.

Fairy Ring: Release oxygen to promote aerobic microbes that compete with active disease then promote regrowth of the affected areas.

Black Layer: Apply bio-stimulants and oxygen releasing elemental oxygen that creates environmental conditions which are not conducive to the growth of bacteria that cause black-layer and increase nutrient levels and increase root depth.

Turf Density/Deep Green Color: Increase nutrients, neutralize soil salts, promote deep root growth and increase water absorption.

Brown Patch, Summer Patch and Dollar Spot: Stimulate new growth and reduce disease intrusion.

Loss of shrubs, trees and flowering plants: Neutralize sodium toxicity, improve soil fertility, create soil conditions that resist disease, improve flowering, enhance color and reduce growing time.

Creating a Better Golfing Experience

"Biofeed's Amino-Carbon Technology is light years ahead of the competition. My greens have continued to be firmer, faster, and have better root structure since we have been on a complete Biofeed program. My clipping yields on greens are very consistent each and every day, producing great putting surfaces without compromising turf quality. By using Biofeed's product line, it helps Grayhawk continue to have great playing surfaces without increasing operational costs."

Ernie Pock, Director of Turf Management – Grayhawk Golf Club, Scottsdale AZ

Our Valued Customers

Biofeed is determined to produce the best products and treatment programs for your business. We want our customers to be as encouraged as we are about preserving the Earth's environment. Biofeed provides its representatives and customers with training from our product development team.

About Us

Since 1986, Biofeed continues producing and marketing the most advanced biotechnology products available. We provide our quality products to Golf Courses, Landscaping Firms, Farms, HOA, and retail consumers in the USA and across the globe.

See our website: www.biofeed.com. Or contact us at customercare@biofeed.com Phone 623-930-7510 Fax 623-930-8598.



GREENS ROLLER



- ♦ 6" diam. drive rollers provide maximum traction and efficiency in morning dew condition.
- ♦ Honda 13 HP motor with electric start combines years of reliability with ease of maintenance.
- ♦ New close box system to protect drive chains from dirt and debris, equipped with automatic tightener to provide ease of operation with minimum care.
- ♦ Lights are standard feature on both models.

AgriMetal

www.agrimetal.com

1006, Principale street, Wickham, Quebec, Canada, J0C 1S0
tel.: 1-819-398-6883, 1-888-398-6883, service@agrimetal.com

Keep your Fairway Green

AMS has manufactured the world's finest soil sampling equipment for over 78-years. We offer a full line of hydraulic powered soil sampling machines and hand sampling equipment. Call us to discuss your needs at 208-226-2017 | 800-635-7330 or visit us online at www.ams-samplers.com



Equipping the World to Sample the Earth



800.635.7330 | 208.226.2017 | ams@ams-samplers.com | www.ams-samplers.com

Soil Technologies Delivering “The Goods” for 30 Years

by Andrew Penner



Just ask any superintendent, beautiful bunkers and lovely flower beds can only get you so far. True, golfers love those little “extras.” Perfect cart paths, beautiful trees, trim and tidy shorelines, and clean and contemporary restrooms are a few obvious examples. However, at the end of the day – or, more accurately, the round! - it’s the quality of the turf that carries the most weight. And this is precisely why hundreds of golf course superintendents have, for the past 30 years, put their trust in Soil Technologies Corporation.

Started in 1982 as an R & D company, Soil Tech has grown to become an industry leader in providing safe and sustainable biological products to a wide assortment of agronomic industries. Based in Fairfield, Iowa, Soil Tech continues to diversify, offering multiple products to large-field agricultural corporations,

greenhouses, landscaping companies, lawn and garden companies, parks and municipalities, and, of course, golf courses and other turfgrass industries.

“The golf industry is a significant market for us,” says Steve Nichols, Executive VP and Domestic Marketing Manager. “In North America approximately 75% of our business is in this industry. We are a trusted source for a wide variety of safe, environmentally-friendly products that save golf courses time and money. But the improvement in the health and overall quality of the turf when superintendents use our products is the real selling point. Our products work. And they work well. Thanks to over 30 years of experience in developing our extensive product lines, including rigorous testing in labs and universities, we have a growing base of loyal followers.” So what are the

products that really set this company apart? “Our most popular products in the golf industry are Bio-Mega, Bac-Pack, Armorex nematocide, and our Liquid Aeration program,” says Nichols. “And, depending on a course’s needs, they will all yield substantial results when it comes to the health and playability of the turf.”

For example, Bio-Mega, which is billed as “A Total Microbial Ecosystem,” has been designed to provide a complete microbial biosphere in the rootzone of highly-maintained turf grasses. The components in Bio-Mega, which are a diverse concentrate of naturally occurring soil microbes that enhance turf health and fertility, work to mineralize nutrients in the soil, fix environmental nitrogen in the soil, provide additional levels of naturally occurring phytoelicitors for improved plant health, build soil organic

matter, regulate soil pH, and displace pathogens in the rhizosphere.

The end result of using the 100% organic product (a regular monthly application would involve mixing a pound of the dry powder with 60-100 gallons of water per acre) is improved turfgrass rooting, improved plant growth and vigor, improved soil structure and fertility, reduced fertilizer and chemical needs, and, certainly, a much stronger, healthier, and consistent turf for golfers to play on.

“With the introduction of TurfTech Bio-Mega, Soil Tech Corporation offers the next evolution in the development of biologically derived products,” says Nichols. “TurfTech Bio-Mega provides turf managers with an economically feasible method of reducing fertilizer, fungicides, and water requirements while achieving a greener, denser, more vigorous, disease-resistant turf.”

Similarly, the results of using Bac-Pack, which is the company’s proprietary blend of microorganisms and antioxidants, can be dramatic. Unquestionably, for disease suppression – including wilt and summer stress - there may not be a better product on the market. Regular Bac-Pack applications improve root growth and are highly-effective in treating Anthracnose, Fusarium, and Rhizoctonia.



Golf-Lift

America's #1 Turf Equipment Lift

Certified

GL-9

(800)788-9789 **www.golf-lift.com**

** The Patented GL-9 is now "Certified" to the rigid OSHA recognized ANSI/ALI ALCTV-2017 turf/auto standard.*

** Exclusive Tire-Wedge turf arm system allows Total Vehicle Coverage*

** Eliminates Overhead Beam Obstacle, Protruding Beams Across Floor and Protruding Beams From Adapters for Wide-Open Access.*

** Manufactured, Warranted and Serviced Nationwide by the Largest Lift Company in the World with over 80% market share of the Car Dealer Business in the USA.*



404-944-9988 info@golfsignco.com

Golf Sign and Design.com

Renovation Experts

Save money, time and get the best service you've ever experienced. Forget the Big Box Behemoth's. Get personal service with our family-owned company that will save you money every time! We even offer on site mapping & measuring and installation!

Recycled Lumber

Custom Tee Markers

"Bac-Pack works as well as any fungicide I've ever used," says Mike Greene, Head Superintendent at the Downriver Golf Course in Spokane, Washington. "It also costs less per application than any other fungicide I've used for Rhizoctonia. Bac-Pack provides relief from a host of plant problems and helps sustain superior turf quality while reducing chemical inputs. We've cut our fungicide costs by approximately 65% and we are incorporating it regularly in our agronomic practices."

Without a doubt, the high costs associated with mechanical aeration – including equipment breakdowns, extensive labor, and materials that accompany the practice – have been a thorn in the side of superintendents (and golfers!) for decades. So, not surprisingly, Soil Tech's Liquid Aeration products

have become increasingly popular with golf course superintendents.

The easy-to-use Liquid Aeration program that Soil Tech has developed has proven to be an effective method to reduce the long list of problems associated with mechanized aeration. The combination of the two liquid applications – Thatch Relief and Oasys Ultra – opens up tight soil, increases turfgrass rooting, and reduces excessive thatch. The two products are mixed together, spray applied, and deliver cost savings and predictable results in every situation and for every variety of turfgrasses.

"Our Liquid Aeration products can be a real game-changer," says Nichols. "The costs, the core clean-up, the mechanical issues, and the disruptions to play have plagued superintendents

for decades. This program reduces thatch by 15% per application. And, the best part is, the unwanted side effects are alleviated."

Regardless of the "root" issues – whether it's pests, disease, thatch, compaction, or some sort of unruly combination! - that are hindering your turf from thriving from tee to green, rest assured, Soil Technologies Corporation has answers for your dilemma. Even severe turf issues and diseases can be effectively treated with their products.

With its diverse array of technologies, Soil Tech offers effective alternatives for disease and pest controls, fertilizers, soil conditioners, biostimulants, and aquatic and soil bio-remediation products. Their products have been developed through extensive research and

development, along with licensed technologies from many other companies and universities.

"Many of our key employees have been with our company for over 25 years," says Nichols. "We understand the issues golf course superintendents are facing in the complex world of turfgrass maintenance. This experience is key. We are always happy to assist you in your search for healthy and effective solutions. Because, as we all know, the quality of your turfgrass is the most important aspect of your operation."

Andrew Penner is a freelance writer and photographer based in Calgary, Alberta, Canada. His work has appeared in many leading golf publications throughout North America, including Golf Magazine, Golf Digest, The Golf Channel, Golf Canada, and SCOREGolf Magazine. Contact Andrew at andpenner@shaw.ca



FREE SHIPPING

*Orders Over \$15,000

NO PAY 'TIL MAY 2020

*For Qualified Applicants



Fairway & Greens Mowers



TORO GR3150 REFRESH
Totally Refurbished!
Priced at \$19,995



2013 Toro Triflex GR3300
1745 hours! Clean!
Priced at \$17,900



2015 TORO GR3150-Q
2430 HOURS – 14 BLADE!
Priced at \$16,900



2015 JACOBSEN GP400
1210 hours! Nice!
Priced at \$12,900



2015 JACOBSEN GK-IV +
1400 hours! 11-blade reels!
Priced at \$13,900



2015 JAKE ECLIPSE 322D
DIESEL - 2400 Hours!
Priced at \$9,900



2015 JACOBSEN LF570
1950 Hours! NICE!
Priced at \$17,900



2014 JACOBSEN LF550
1290 hours – Very Clean!
Priced at \$16,900



2004 TORO RM5400-D
Great budget unit!
SPECIAL PRICE \$6,900



2012 TORO RM5410-D
1995 hours! Clean Unit!
Priced at \$16,900



2014 TORO RM5510-D
2200 hours - R/R Brushes!
Priced at \$22,900

Sprayers, Rollers & Rakes



TORO SP5040 REFRESH
Totally Refurbished!
Priced at \$11,995



2012 SALSICO ROLLER
11 HP - Includes Trailer!
Priced at \$6,900



TRU-TURF ROLLER
48" with Honda Engine!
Priced at \$7,900



2014 TORO 1240 ROLLER
640 hours! Clean!
Priced at \$4,900



2014 TORO SP3040
2457 hours! Rakes/Broom!
Priced at \$9,900



2008 TORO 1250 SPRAYER
Foamer – 1580 hours!
Priced at \$10,900



2014 TORO SP 5040
Rakes! 2200 hours!
Priced at \$9,900



TORO WORKMAN 3200
Sprayer - 2300 hours!
Priced at \$6,900



2010 TORO WORKMAN HDX
Sprayer - Diesel! 2390 hours!
Priced at \$14,900



2014 TORO MP1750
Foamer - 2450 hours!
Priced at \$16,900



2009 TORO MP5700-D
300 Gallon! Diesel!
Priced at \$12,900

Rotary & Trim Mowers



2013 TORO GM4500-D
2250 hours – CLEAN!
Priced at \$34,900



2014 TORO GM4000-D
1784 hours! Tier 4!
Priced at \$32,900



2011 TORO GM3500-D
1100 hours! NICE!
Priced at \$15,900



2015 JACOBSEN AR522
1440 hours! 4WD!
Priced at \$22,900



2015 TORO GM3500-D
1550 hours! CLEAN!
Priced at \$17,900



2009 TORO RM3100D SW
1955 hours! 84" Cut!!
Priced at \$7,900



2010 TORO GM3500-D SW
2470 hours! Canopy!
Priced at \$15,900



2015 JACOBSEN TRIKING 1900D
890 Hours! Diesel!
Priced at \$10,900



2004 JACOBSEN TRIKING 1800G
84" Cut! Gas!
Priced at \$3,900



2017 TORO GM3280-D
72" SD - 197 hours!
Priced at \$16,900



2014 Toro GM4300-D
Great Shape! 1980 hours!
Priced at \$22,900

Vehicles & Other Equipment



2015 DEERE AEROCORE 800
Excellent Shape!
Priced at \$8,490



2008 TORO PROCORE 648
Serviced and Ready!
Priced at \$13,900



2015 TORO PROCORE 648
1050 hours! NICE!
Priced at \$16,900



2012 TORO PROSWEEP 5200
Nice Unit!
Priced at \$4,995



NEW LS XR4145H TRACTOR
Loader-Hydro-Turf Tires!
Priced at \$24,900



2016 CLUB CAR 500 CARRYALL
1490 HOURS!
Priced at \$5,995



2015 TORO WORKMAN HDX
Auto – 1560 hours!
Priced at \$11,900



2015 TORO WORKMAN HDX
389 hours! 4WD!
Priced at \$19,900



2012 TORO WORKMAN HD
Air-cooled! Low hours!
Priced at \$10,900



2015 TORO WORKMAN HDX
695 Hours! CLEAN!!
Priced at \$13,900



CUSHMAN HAULER 1200X
Canopy - Windshield!
Priced at \$3,995

cutteronline.com

800.596.8873

Canton, OH

NEW & USED PARTS for the GOLF & TURF INDUSTRY



Hundreds of Parts Machines! Thousands of Parts!

NEW & USED Parts We Offer

- BELTS, SPINDLES & PULLEYS
- DRIVE TRAIN COMPONENTS
- SEATS, FRAME & BODY
- ENGINE COMPONENTS
- TIRES, WHEELS & CASTERS
- ENGINES
- SERVICE PARTS
- CUTTING UNITS
- HYDRAULICS
- ELECTRICAL

Engine Components



PART NAME	REPLACES OEM #	PRICE
USED Radiator	117-5135	\$599
NEW Replacement Water Pump	5001960	\$129
NEW Replacement Water Pump	554085	\$129
NEW Replacement Water Pump	105-3749, 94-3194	\$129
NEW Alternator	112-1364, 94-3252	\$512
NEW Alternator	2810354	\$350
NEW 12V Starter	556988, 100-9237	\$244
NEW Replacement Motor Starter	98-9705	\$250

Wide Assortment of Used Radiators In Stock!

Hydraulics



PART NAME	REPLACES OEM #	PRICE
USED Hydraulic Cylinder	99-6986	\$193
USED Control Valve	84-2203	\$1,599
USED Wheel Motor w/Hub	1001757	\$592
USED Hydraulic Reel Motor	TCA15598	\$269
USED 5 Section Hydraulic Pump	2809849	\$695
NEW 5 Section Hydraulic Pump	2809849	\$1,240
NEW Hydraulic Reel Motor	4143249, 123285	\$249
NEW Hydraulic Reel Motor	120-2072	\$269
NEW Hydraulic Reel Motor	94-3506	\$259

Seats & Accessories



PART NAME	REPLACES OEM #	PRICE
NEW Yellow High Back Seat	TCA13830	\$139
NEW Grey High Back Seat	92-1180, 104-4620, 100-3187, 66172	\$139
NEW Black High Back Seat	several	\$139
NEW Grey Low Back Seat	103267001, 112-2923, 99-7281	\$129
NEW Seat Safety Switch	AM124426, AM125824	\$12
NEW Universal Seat Slide Rails	3006991, 119-0654	\$55

Tires, Wheels & Casters



PART NAME	REPLACES OEM #	PRICE
NEW Flat Free 8" Smooth Tire & Wheel	several	\$59
NEW 18x9.5-8 4 Ply Smooth Tire	28-3680, 110-5133	\$59
NEW 18x9.5-8 4 Ply Super Turf Tire	119-3516	\$53
NEW 20x10-10 4 Ply Ribbed Tire	94-5261	\$69
NEW 26.5x14-12 4 Ply Turf Tire	several	\$139
NEW 11x4-5 Smooth Flat Free Tire & Wheel Assembly	4252390	\$79

Engines



NEW - Briggs & Stratton 18HP Vanguard Engine
In stock! Same Day Shipping!
(If ordered by 2pm EST)
\$1,395
*includes delivery!



USED - Briggs & Stratton 18HP Vanguard Gas Engine
In stock! Same Day Shipping!
(If ordered by 2pm EST)
Starting at \$795
*includes delivery!

Need a Lift?

*Hundreds of Used
John Deere, Toro, and Jacobsen
Hydraulic Cylinders available!*

**Too many to list! Give us a call
and let us find what you need!**

From Around the Industry

For More News, Visit GolfCourseTrades.com

John Deere 2700 and 2750 PrecisionCut™ and E-Cut™ Hybrid Triplex Mowers Receive AE50 Award Honor



After a successful launch in 2019, the John Deere 2700 and 2750 PrecisionCut™ and E-Cut™ Hybrid Triplex Mowers were honored as a 2020 AE50 Award winner by the American Society of Agricultural and Biological Engineers (ASABE). Each year the AE50 awards highlight the most innovative designs in product engineering in the food and agriculture industry, as chosen by a panel of international engineering experts.

The development of the 2700 and 2750 reel mowers was based on customer needs and challenges, most importantly, the struggle to find quality labor and tight operating budgets. With this in mind, the triplex mowers are equipped with the proven advanced TechControl system, which is passcode protected and allows superintendents, technicians, and other trusted supervisors to input commands, controlling nearly everything regarding the operator's performance, including frequency of clip, turn speed, clean up pass speed, and how fast the cutting units raise and

lower. Engines on all models are electronically controlled, and include an Eco mode, which automatically reduces engine speed when mowing, saving up to 30% in fuel and up to 3 dB(A) in sound levels. The lightweight open platform design with a low center of gravity ensures excellent stability and traction performance. The 2700 and 2750 Triplex Mowers offer a 62-inch (157.5-centimeter) mowing width and mow speeds of up to six mph (9.7 kph) for increased productivity.

"Our customers are battling a variety of challenges, from labor to budgets. The 2700 and 2750 Triplex Mowers were designed to directly tackle these concerns and take the stress out of mowing," said Brad Aldridge, product manager, John Deere Golf. "From the innovative TechControl system to the open platform design and excellent cut quality, these machines allow for a precise, uniform cut, regardless of the operator. Now every operator can be your best operator."

ASABE is an international scientific and educational organization dedicated to the advancement of engineering applicable to agricultural, food, and biological systems. Each year the ASABE announces the AE50 awards and presents the award at the ASABE Agricultural Equipment Technology Conference in Louisville, Ky., in February.

In addition to the Triplex Mowers, John Deere received multiple AE50 honors in 2020. Other John Deere product winners included the Quik-Knect™ system for compact utility tractors, M and R Series Commercial Walk Behind Mowers, MowerPlus™ Smart Connector, LS475 Liquid System and N500C Air Drill.

To learn more about the John Deere 2700 and 2750 Triplex Mowers, as well as the full line of John Deere golf equipment, please visit www.JohnDeere.com.



Arborjet & Ecologel today announced a brand-new tree and shrub care program launch: Arbor Rx™, a highly effective, liquid line of tree fertilization and soil enhancement products, designed to improve tree and shrub vitality.

In urban and suburban environments, trees and shrubs often become stressed due to poor soil, insufficient moisture, lack of nutrient availability, and harsh growing conditions.

Arbor Rx™ is designed to mitigate these issues by offering prescriptive deep root fertilization and soil enhancement program to maximize tree and shrub health by combining plant nutrition with other special products to enhance soil quality, stimulate root growth, and improve water availability.

ArborPlex® forms the foundation of the Arbor Rx Program. ArborPlex® (14-4-5) is formulated with slow-release nitrogen from urea-triazone, high-quality phosphorus, and potassium, as well as micronutrients. It is designed to provide consistent, extended feeding for trees and shrubs. It is an ideal solution for improving tree, shrub and ornamental development and vigor without excessive shoot growth.

The entire Arbor Rx line is comprised of liquid products that do not require mechanical agitation. Additionally, the entire line is tank compatible for easy combination applications.

For further information, please visit: <https://arborjet.com/arborrx/>

New Owners of Spring Lake Golf Resort announce Rebranding and Redevelopment Plans



Signature H Property Group, which purchased the Spring Lake Golf Resort in November 2019, announced they are rebranding the resort to "Sebring International Golf Resort."

"We believe the new branding will embolden the property as the premier golf resort in Sebring, while broadening its exposure to US and international markets," said Helmut Wyzisk III, President of Signature H. "This is the first step of a comprehensive plan to revitalize and reposition the resort."

Signature H Property Group, the parent company to New Spring Lake Partners, formed a strategic partnership with XUDE Hospitality, lead by golf industry veterans Mike Miraglia and Jerry Moore, to manage resort operations. Plans for redevelopment include the transformation of two existing 18-hole golf courses into one 27-hole Steve Smyers designed championship course, which will take place in phases over the next two summers. The property will also feature a 12-hole short course which is currently under construction and opening this year.

The resort's existing clubhouse will also undergo major renovations and the addition of new commercial, residential and resort amenities are planned; including a small home village, single family homes, multi-family apartments, a senior campus and a town center with retail and commercial businesses. Numerous parks, trails, and

outdoor amenities will also be included. Further information will be released when plans are finalized and approved by local municipalities.

Wyzisk III describes Signature H's consideration when developing such a special property, "As native Floridians, we have a true appreciation for the character of this property. It is natural and authentic Florida. We're honored to be the stewarding the property into sustainability so its essence can be enjoyed by generations to come."

Signature H Property Group is a real estate company specializing in the design and development of livable, sustainable communities and is a collaboration of some of the most experienced planners, designers, engineers, developers and construction managers. The company has made its mark on a multitude of development projects in both the public and private sectors; including hotels, retail centers, municipal projects, and urban communities. For more information, visit www.signatureh.com.

XUDE Hospitality is headquartered in Miami with offices in Naples and Sarasota. The XUDE team has a proven track record in revenue generation, membership growth, operating efficiency, construction and renovation in properties of all sizes – including golf courses, country clubs, resorts, hotels, and real estate developments. For information visit: www.xudehospitality.com.



GIVE JOE A CALL @ (716) 474-1911

We Sell, Buy & Trade

• **FINANCING AVAILABLE** •

CHECK OUT OUR INVENTORY AT
UGATESTORE.COM



SPRAYERS



TOP DRESSERS



FAIRWAY MOWERS



UTILITY VEHICLES



AERATORS



SWEEPERS



ROTARY MOWERS

CALL US TODAY
(716) 474-1911
SALES@UGATESTORE.COM
AKRON, NY

BUYING OR SELLING

TradesWEB.com

WE WANT TO
MAKE IT EASY



931.484.8819

TradesWEB.com



Country Club

Landscaping and Equipment Repair

MANY ITEMS ARE AVAILABLE AND NOT LISTED PLEASE CALL 1-440-235-2157 AND ASK FOR JIM OR VISIT THE WEBSITE



2014 Jacobsen R311T
388 hrs
\$29750



Kiotti 4 wd DK55
with a/c/heat
\$16750



2017 Jacobsen GKIV
Plus gas greensmowers
3 available \$17750



2014 Toro 5910 rotary 16
ft 100 hp cummins 4 wd
heat and a/c \$45750



2017 Steiner 450 With
Mower 77 Hrs \$22500



2012 Jacobsen
R311t \$22950



2017 Jacobsen HR600
with cab a/c heat
1371 hrs \$45750



Wiedenmann GXi6
deep tine aerator
\$12750



2009 Toro 5700D
300 gallon sprayer
Reduced \$11750



2012 Toro HDXD
diesel 1022 hrs
\$11500



2015 Toro 5040
sandpro with Rahn
481 hrs \$13500



2015 John Deere
7500A fairway mowers
(5 available) \$13000



2017 Jacobsen LF 550
low hrs 2 avail.
\$27750



2017 Jacobsen 1900 D
635 hrs
\$16500



Planet Air HD50 Aerator
Like New
\$8500/trifecta \$15500



2013 Jacobsen LF550
w/505 hrs
S&S \$18950



2011 Dakota 440 top-
dresser with conv,
new spinners \$20750



2016 Toro 4000D
\$33950



2014 Toro 3550
S&S
\$15750



2014 Jacobsen LF 550 4
wd turbo
\$18500



2016 Toro procore
648 aerators
\$21500

2016 Case skidster 1410 hrs new bucket \$31750--2012 Toro 5910 16 ft mower \$35750---Brand new Tycrop QP300 topdresser \$8850- ---2013 ClubCar Turf I \$4350-- 2011 Toro HDX workman 1470 hrs \$10500-- Jacobsen GA 24 Walk Behind Aerators \$3500--John Deere Walk Behind Aerators \$3995--Jacobsen V 62 Sweeper \$8500--Toro Prosweep 5200 \$4000-- 2015 John Deere 1550 rotary \$7250--John Deere 1435 rotary from \$3995-- 2013 Toro HDX with 200 gallon sprayer \$15500--2012 Jacobsen R311T \$18750 ---2014 Jacobsen LF550 504 hrs \$19950 ---John Deere 4600 tractor \$7500, Toro 1298 8 ft aerator \$22500 -- Toro procore SR72 deep tine aerator only 10 hrs \$22500 -2012 john Deere 2500 BDE greensmowers \$7500, -2015 Toro 360 4 wd 72 inch deck \$15750--2012 Toro HDX gas 1022 hrs \$11500-- 2015 Jacobsen 1900D 550 hrs \$12500-- Salsco roll n go greensroller \$9950-- 2015 John deere 1600 wide area mowers \$18500

www.usedturfequipment.com

SPRING TURF RECOVERY

POWERED BY NUTRIFENSE™

April 7, 2019

June 1, 2019

"The spring of 2019 was the most challenging of my career. Ice caused extensive damage on over an acre of greens. The Turf Fuel Recovery Program exceeded my expectations and helped me open my greens sooner than I anticipated. I am so glad I trusted Turf Fuel products with my fertility during my recovery, and I am excited to use their products in a standard program."

- Ian Daniels,
Superintendent, Teugega Country Club



Turf Fuel®

TARGET
SPECIALTY PRODUCTS™

Contact Us: info@target-specialty.com
target-specialty.com/gtm



Testing Aeration Methods

By Trevor Hedgepeth, CGCS

This past week we tried to setup and execute an experiment that may tell us which aeration methods should be used for our upcoming, spring aeration. We would like to thank Cutler Robinson, CGCS, for his help in collecting samples from our trial greens.

Aeration is a difficult practice because while it is critical to plant health, it doesn't exactly leave behind the smoothest putting surfaces

To best find a balance between sound agronomy and play-ability we asked Cutler to pull a sample from each green and run a Soil Mechanics test. We are interested in: bulk density, porosity, infiltration rates and organic matter content.

After sampling each green, we applied sand top-dressing at a rate of 1000 lbs. per 1000 square feet. After the deep-tine, each green was aerated using 3 different methods.

Green #1 was triple, solid-tined to a depth of 2.5" using 5/8" diameter, solid tines.

Green #2 was core aerated with 3/8" coring tines to a depth of 2.5" and then solid tined with the 5/8" solid tines.

Green #3 was core aerated with 1/4" coring tines to a depth of 2.5" and then solid tined with the 5/8" solid tines. (Although a 1/4" tine, the spacing was tighter than the 3/8" application)

Green #1 - 3x Solid



After the respective aerations, each green was swept and rolled in multiple directions. The finished products are in center column.

Fortunately, Monday night, we received over 1" of rain so when Cutler returned to re-sample each green, the surfaces were plenty clean and washed-in.

Green #2 - 3/8" Core + 1x Solid



Now that we have sampled each green before and after the different aerations we will await the physical results. Our hope is that the least disruption will produce the best test results (wishful thinking:) Although that is unlikely, we at least hope that the most disruption will produce the best results so that we can feel really confident about the "pain" we may be inflicting in 6 weeks. Whatever the results may be, it was an interesting experiment and we are excited to see what the differences will be.

Our next post will cover the results and offer our best conclusions.

Original Post on Kinloch Golf Club Golf Course Operations - <http://kinlochgcm.blogspot.com/2020/01/testing-aeration-methods.html>

Green #3 -

1/4" Core (Quad Tine) + 1x Solid



The magic of
EVERGREEN
THE PROVEN NAME IN TURF COVERS



WITH
SMART EDGE TECHNOLOGY™

3 LEVELS OF
COVER FOR
ALL BUDGETS

CHECK THIS OUT

Breathable – Does your turf cover allow for proper air / water flow?

Efficient – Does your turf cover have Smart Edge technology, reducing the need for extra grommets/hemmed edges?

Inert Fabric – Can your turf cover prevent any water, chemical, or dirt from adhering?

Ease of Use – Is your cover lightweight, and manufactured in one piece?

Tight Weave – Does your turf cover prevent grass from growing through it?

Piece of Mind – Does your turf cover offer the best warranty, from a company with over 35 years of experience?

Tailored to Your Needs – Does your turf cover's manufacturer offer 3 grades of warranty to meet your specific budget?

Durability – Can your turf cover withstand harsh winters, while offering quick germination and easy maintenance?

Reputation – Is your turf cover trusted by 28 host golf courses to the U.S. open since 1985?

1 800 388 7871 | evergreenturfcovers.com | @EvergreenCover



See why turf managers around the world are switching over to the Ultra Blade!



Incredible Cut Quality

The **ULTRA BLADE**
from Turf Pride



THE ULTRA BLADES - STRAIGHT or TRIPLE BEND

- Super thin profile
- Low lift
- Easy to sharpen
- No need to balance
- Maintains edge longer
- Saves on fuel cost!!

Here's what they say

"WOW" Amazing!!
Incredible!!
Never seen a blade cut like these I won't run any other blade.
Eliminate all the clumps!!

Special high chrome, nickel and carbon alloy. We offer blades for most all rotary mowers. Try a set and see for yourself!

(800)426-3634 • sales@turfprideusa.com • www.turfprideusa.com

We're not just in the business... WE MADE IT!



Our large inventory allows us to supply any tire need for any machine or vehicle.

Golf Course Superintendents nationwide have proven that Pump's Flotation Tires are essential during delicate operations:

• TOP DRESSING • SPRAYING • MOWING • BACK FILLING TRAPS • AERATING

The large contact area of the flotation tire effectively distributes load over a broad area. This produces lower unit ground pressure, resulting in minimized soil compaction. Our custom built wheel and tire combinations will convert your golf course equipment into the most productive tools you will ever own.



FLOTATION TIRE SALES & SERVICE

1037 W. Broadway

Box 637 Monticello, IN 47960

Phone: 574-583-4136 • Fax: 574-583-7267

www.pomptire.com • rzarse@pomptire.com

"The Tire Professionals"
Since 1939

"We know tires... You should know Pump's"

For further information call our TOLL FREE number today in the US & Canada:

800-348-2396

Pump's

TIRE SERVICE

THE
Flotation
Tire
Specialists!



GOODYEAR
GALAXY

TITAN
CARLISLE



ORIGINAL EQUIPMENT REPLACEMENT

FLOTATION TIRES • RIMS

• WHEELS • SERVICE

Rims and Wheels: Specially fabricated heavy-gauge rims and wheels are available for custom conversions and original equipment replacement.

COMPANY SPOTLIGHT



Finding new ways to improve the treatment of trees and plants

Quest Products Companies were founded on the concept of "Finding new ways to improve the treatment of trees and plants".

The founders have more than 70 years of experience in the agriculture, horticulture, turf and specialty markets. Quest Products was the leading edge in bringing forth new and better technologies to treat plants of all types to reduce stress and better disease control with their **Stress Master®** Phosphite based fertilizers and **Reliant Systemic Fungicide®** product. Patent pending controlled release **Reliant Dry Granular Phosphite**, that releases for several months has enabled growers to adjust treatment timing and significantly improve plant health through better uptake and utilization thus reducing overall pesticide expense and application labor cost.

The concept and the proven method of "thru-bark application of pesticides" was pioneered by Quest with the development of its truly unique **Pentra-Bark, Bark Penetrating Surfactant®**. This non-invasive, non-injurious treatment method to deliver systemic insecticides, fungicides and herbicides to trees of all types has greatly helped the agricultural and arboricultural community.

Quest is always looking and researching ways to develop new or to substantially improve products and technologies offered in today's markets. Another much improved product is **Influence Spray Adjuvant with LRT (Low Odor Technology)**. Many manufacturers and distributors have a 4 in 1 surfactant product that: buffers tank pH, reduces drift, contains a deposition aide and have some surfactant properties. The problem with this type of product, is the terrible objectionable odor of the product for both the applicator and for the general public. Additionally, they have little to no

surfactant property, don't mix in the tank very well and requires heated storage.

Influence

LRT

eliminates all the previous problems, it has no odor objectionable odor, it contains a fully functioning wetting and spreading surfactant system, can be stored in unheated storage and explodes in a bloom when added to the spray tank.

Quest has been deeply involved in the controlled release fertilizer industry with development of dry controlled release and liquid controlled release technology. This led to the development of the **Reliant Controlled Release Granular Phosphite** product and the **Main Event Micro-Nutrient Complex Products**. The **Main Event Micro-Nutrient** products were birthed from the technology learned in creating various controlled release products and applying it to various micronutrients in combinations. The **Main Event** product both contain 6 different chelating technologies to give an even sustained release of micro-nutrients to the soil that are plant available for an extended period. At normal use rates golf course superintendents report 4 to 6-week longevity on greens and 6 to 8-week longevity on fairways, lawncare operators report similar results of extended greening for 6 to 8 weeks after application. This extended release fits perfectly in between "rounds" for the applicator.



"I use Main Event and Stress Master to keep the course in top play condition." Rich D.

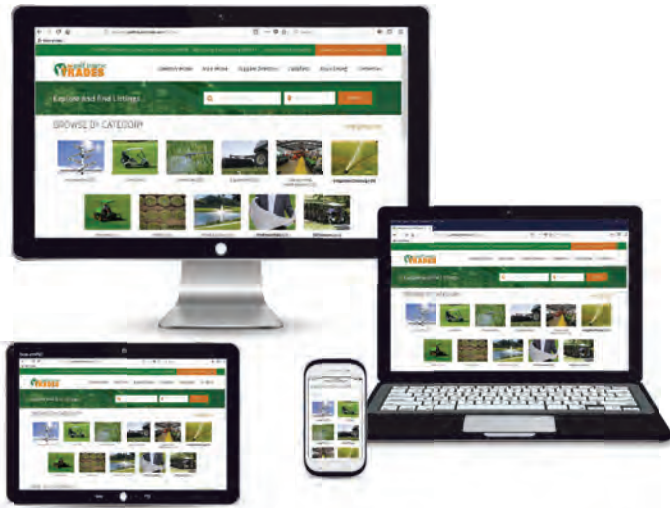


Chemical Trespass of pesticide application is becoming more of a flash point for the public. Whether it be actual drift of the product or odor of the product itself. Odor is not only problem at time of application but also long after the application if it remains detectable. **Fresh Cut with ORT, (Odor Reduction Technology)** was developed to address just such issues of odor and the perception of pesticide chemical trespass. People perceive any odor if it objectionable to them as "toxic" and bad for people, pets and the environment regardless of the science behind the product or the technology. **Fresh Cut with ORT** prevents odors in 3 ways, first it combines with volatile organic compounds (VOC's) in the spray tank to prevent direct odor, second it actually temporarily blocks nasal sensor recognition of pesticide odors when sprayed and third it imparts the pleasant fragrance of fresh cut grass to the solution. Fresh Cut eliminates the odor of standard 3 way herbicides, insecticides, herbicides and just about any pesticide odor. This is most helpful when spraying highly sensitive areas such as around schools, parks, residential areas, anywhere odor can precipitate a call asking "what are you spraying, will it hurt me, kids, pets or anything else? Fresh Cut prevents the call wanting to know.

Quest is dedicated to the development of new technologies and better methods to treat plants and trees. For more information call 785.542.2577 www.QuestProducts.us.

The News AT YOUR FINGERTIPS

EXPERIENCE THE TRADES HIGH-PROFILE INDUSTRY NEWS,
INTERVIEWS and THOUGHT-PROVOKING FEATURES
EVERY MONTH on YOUR PHONE or TABLET!



CHECK OUT OUR NEW DIRECTORY, VISIT TradesWeb.com.

iPhone

kindle fire

nook

zinio

kobo

Spray 2 Times in Only 1 Pass!



GREENLEAF

TECHNOLOGIES

GIS
Booth
#1828

THE LEADER IN AIR INJECTION NOZZLES

Celebrating 25 years of Innovation

"I spray everything through those dual fans these days. Weekly foliar apps on greens, herbicide, insecticide, nematode treatments. You name it, we probably sprayed it. I have reduced my Primo applications due to the fact that I am getting much improved coverage on the plant."

Chris Senior, Countryside Country Club
Clearwater, Florida

GCSAA
AFFILIATE MEMBER



Get better coverage with less drift.
Get Greenleaf's Asymmetric DualFan nozzles.

www.GreenleafGolf.com • 1.800.881.4832



**TURF, LAWN
& LANDSCAPE
equipment**

USTurfEquipment.com - 980-354-7122

"We offer high quality, pre-owned turf equipment for golf courses; and all other outdoor sporting venues."



www.usturfequipment.com

NEW FLEETS OF GOLF CARTS ARRIVING SOON!

+15

MORE PRE-OWNED

Rotary Mowers

www.usturfequipment.com

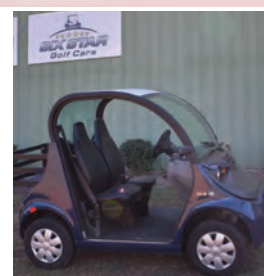


2014 JACOBSON LF 570 2WD
\$7995 - 1600 HOURS



Ryan Aerator - call for price

We Buy
Used Golf
Carts



2016 Polaris Gem E2 -
\$6495.00



Turfco Top Dresser - \$8995
Widespin 1550

+30

MORE PRE-OWNED

FAIRWAY MOWERS

www.usturfequipment.com



LELY SPREADER - \$1995



2016.5 Club Car Transporter -
\$5995.00 (Several in stock) New
seats & Roof

We Sell
Used Turf
Parts



2014 Jacobson Walking
mower Trailer \$250



Smithco Super Star -
\$5500 1200 hours

We have lots of new inventory arriving first of the year. Call us and let us help you get ready for the upcoming season.

Daniel Smith, Managing Partner
(704) 956-5472
daniel.smith@usturfequipment.com

980-354-7122

Visit Us 9540 Mission Church Rd. Locust, NC 28097

Devin Hall, Controller
(980) 354-7122
devin.crisco@usturfequipment.com

Rookie Year: An Assistant Superintendent's Story

By Linda Parker



Whether you're relatively new to turf maintenance and management or have logged decades on the job, chances are, no year of work in the profession stands out in your mind as clearly as your first year. Every experience you have in your new role is a first-time event.

According to a 2015 Harvard Business Review study of more than a million participants, the year one anniversary is also the time when voluntary turnover peaks. Apparently, many workers are willing to give a job a year of their lives before deciding that either the employer or the profession itself is just not the right fit. With this thought in mind, we sought out a rookie to interview. We wanted to hear about the first year's ups, downs and surprises of the job for an assistant

superintendent.

Rookie Year

Unfolding over 125 acres of diverse terrain along the shores of northern Idaho's Lake Coeur d'Alene, The Golf Club at Black Rock is breathtakingly beautiful. Thoughtfully designed into the landscape by architect Jim Engh, the course is defined by dramatic elevation changes, sweeping views of the Rocky Mountains Bitterroot Range and stop-you-in-your-tracks vistas of the lake.

By any measure, this upscale private course that sees just under 8,700 rounds of golf annually is a pretty incredible place to spend your first year, or any year, on the job. So it's not surprising that the fledgling assistant superintendent at Black Rock had so much positive feedback to share.

March 4, 2020 officially marked Bryce Marie Weber's one-year anniversary as assistant superintendent at The Golf Club at Black Rock. Unlike many who pursue this career, Bryce's interest in the profession wasn't piqued as a high schooler working summer shifts at the local golf course. In fact, she did not start college with the intent of studying turf management. Her lack of familiarity with the profession reflects how the golf industry has advanced in gender equality, yet still struggles to make young women aware of turf management as a viable career.

"I enrolled in Delaware Valley University (Doylestown, Pennsylvania) to pursue a career in Conservation and Wildlife Management," said Bryce. "I'd never heard of Turf Management as a field of

study until I got to college. But I became interested in it as I saw far more job ads for turf professionals than for people with degrees in conservation."

"As soon as I changed my major," said Bryce, "I knew it was a good decision for me. I liked my classes better. They came easier for me. My professors and classmates welcomed me and supported my change of majors. I am a detail-oriented person and I felt that that helped me do well in some of my coursework."

Bryce interned at the Rock Creek Cattle Company Golf Course in Deer Lodge, Montana and at Wolf Creek Golf Club in Mesquite, Nevada. She described her internships as opportunities "to physically do something outside in a hands-on manner, instead of just learning it in a classroom." Her experiences reinforced her decision to pursue a career as a golf course superintendent.

One Year Under Her Belt: Q & A

GCT: Idaho is a long way from Pennsylvania. How did you find your job?

Bryce: "I finished school in three and a half years instead of four, so I was ready to go to work as courses were opening up for the spring season, 2019. I connected on Twitter with Jessica Lenihan who is the

assistant superintendent at Hayden Lake Country Club in Lake Hayden, Idaho. She is a graduate of the four-year turf program at Penn State. I was really interested in her insights on her job. She told me about the opening at Black Rock. It wasn't even being advertised at the time."

GCT: What was it like getting started on the job?

Bryce: "I was lucky because I started in March when there was still snow on the ground. I got to be part of opening the course up for the season, step by step, which is a great way to move into the job."



During season, our crew gets to about 30 people but in off-season we drop down to 10 or 12."

GCT: What different types of experiences have you had this past year?

Bryce: "I've been part of stripping out an entire green

surround and resodding, of building a tee, and in November was my first time to be involved with or ever see the process of blowing out an irrigation system. I was one of the main people on that project. Plowing was another thing I was unfamiliar with doing, but I am learning to do in our snowy Idaho winters.

We are responsible for plowing HOA common areas, golf course cart paths, the main road that runs through the property and other community areas."

GCT: What's been your biggest surprise this year?

Bryce: "It's been good to feel comfortable being a manager, but I've been surprised how challenging it can be to communicate with part of our seasonal crew that speaks Spanish and very little English. I've also learned a lot about motivating the high school students that work in the summer. You've really

got to switch up the tasks for them. If their work is repetitive or too boring, you lose them. But overall, I've been comfortable running the crew.

"Also, this has been my first time at a course with creeping bent grass fairways. I have worked at courses where you have it on the greens, but we also have it on our fairways, so the fairways here get a lot of attention."

GCT: Are you the only woman on the crew and if so, has it mattered?

Bryce: "I am the only woman, but it hasn't been an issue. No one gives me 'girl' jobs or holds back from giving me tougher roles to handle. I am glad about that. I think most of the crew is okay working with me, and if not, that's them, not me. I certainly haven't had a single day I wanted to quit, and if I have a day when I question myself, something always turns it around. Our crew is great, we see the product of our efforts, and of course, any day you get to work outside is a good day. It's so beautiful here, and you



Golf Trades Trades Place

THE DIFFERENCE IS CLEAR



HARPER
TURF EQUIPMENT

LASHLEY TRACTOR SALES

Stonecrest, GA ☎ (770) 808-5500
www.lashleytractorsales.com

EVERGLADES EQUIPMENT

Boynton Beach, FL ☎ (888) 746-8873
www.evergladesequipmentgroup.com



Great **Turf** in less **Time**
with the right **Equipment**

www.TurfTimeEq.com
800-201-1031

The Classic dethatcher
verticutter



"NEW FOR 2018"
"CUP CUTTING CADDY"

Higher quality
plastic container for
better durability.

Celebrating our 29th
consecutive GIS



One handle instead
of two for better
access to all pockets

Replaces the
5 gallon plastic
bucket.

Larger Pockets

www.jett-enterprises.com
800-588-3138



do a project off by yourself on the course, you see the wildlife, and, not to sound corny, but it's pretty hard to feel anything negative in this environment."

GCT: Have you had a mentor this year?

Bryce: "My Superintendent Lonnie Aller is great, but I mostly turn to my fellow Assistant Superintendent, Dan Frederiksen. He's been on the job about twelve years, so I take most of my questions to him."

GCT: What have you found to be the biggest challenge of the course itself? Or what has been your most difficult day?

Bryce: "I think everyone on the staff would agree with me that our rough is a pain to keep. Our slopes are tough to get water to and keeping them green is challenging. My toughest day was May 24 last year. We had heavy rains, which resulted in one of our greens flooding. We worked about 14 hours that day, and there have been other 14-hour and longer days, like when we topdressed our greens. But they really are okay. Everyone jokes, and morale is good, which makes the time go faster, and long days or wet days go pretty quickly."

Yesterday. Today. Tomorrow.

Bryce Weber represents the face of the future in turf management. She is



remarkable, not because she is a female in a job where male workers predominate, or because she found her job through the Twitterverse, or for any other reason that makes her different from her peers. Bryce is remarkable because she sounds so very much like countless other superintendents and assistants we have interviewed. She is motivated by her love of the outdoors, her need to dig in and see her accomplishments come to life and by a genuine appreciation for the team with whom she works and the club members she serves.

If this rookie-year story tells us anything, it is that the face of the future in golf course maintenance looks a lot like the faces of the present and of the past. Respect for nature, a love of nature and a desire to effect change define those who are drawn to this role. Core values are clearly holding steady, and this critical fact bodes well for the future of the profession.

Linda Parker has been writing professionally since the 1980s. With clients in finance, sports, technology, change enablement, resorts and nonprofit global initiatives, Linda helps organizations communicate their stories in meaningful ways to the people they most want to reach. She has authored, ghostwritten or contributed to more than a dozen nonfiction books. Linda is a member of the Authors Guild and the Golf Writers Association of America. You can connect with her at Linda@GlindaCreative.com

THE Golf Course TRADES ADVERTISERS

Abell Turf & Tractor www.abellturfandtractor.com 32	Harper Industries www.harperindustries.com 28
AgriMetal, Inc. www.agrimetal.com 13	Jett Enterprises www.jett-enterprises.com 28
AgSource Laboratories www.agsourcelaboratories.com 29	Nordic Plow LLC www.NordicPlow.com 4
AMS, Inc. www.ams-samplers.com 13	Pomp's Tire Service www.pomptire.com 23
Bannerman Ltd www.sportsturfmagic.com 29	R & R Products www.rrproducts.com 30
Biofeed Solutions, Inc. www.biofeedsolutions.com 4	Repower Specialists, Ltd. www.repowerspecialists.com 7
Country Club Landscaping www.usedturfequipment.com 21	Solitude Lake Management www.solitudelakemanagement.com 30
Cutter Equipment www.cutteronline.com 16,17	STS Turf www.ststurf.com 2
Dakota Peat & Equipment www.dakotapeat.com 11	Target Specialty Products www.target-specialty.com 21
Evergreen Turf Covers www.evergreenturfcovers.com 23	Turf Pride, LLC www.turfprideusa.com 29
Flexstake www.flexstake.com 4	Turf Pride, LLC www.turfprideusa.com 23
Futures Golf Equipment www.futuresgolfequipment.com 5	TurfTime Equipment www.TurfTimeEq.com 28
Global Turf Equipment www.globalturfequipment.com 3	UGATE Store www.ugatestore.com 19
Golf Sign & Design www.golfsignco.com 15	US Turf, Lawn & Landscape Equipment www.usturfequipment.com 25
Golf-Lift www.golf-lift.com 15	Wesco Turf Incorporated www.wescopreowned.com 31
Greenleaf Technologies www.turbodrop.com 25	

Golf Trades Trades Place

SOIL • PLANT TISSUE • WATER

Providing trusted, independent turf analyses for over 50 years!



**Ask us about our
Soil Health Add Test!**

402.413.8276 • bit.ly/TurfTesting

©2019 All rights reserved. AgSource Cooperative Services A-20985-19

AgSource
LABORATORIES

Thinking of Removing Cores This Aerification Season?



Turf Pride
turfprideusa.com



**Only the original "CORE
COLLECTOR" from Turf
Pride offers:**

- Savings on labor costs
- Attaches to walk behind and tractor drawn aerifiers
- Top dressing ahead of aerification
- Available models to fit all major brands of aerifiers
- saves even more time, hassle and protects greens from damage

**MO/IA/KS/NE/IL
COMMERCIAL
TURF & TRACTOR
CHILLICOTHE, MO
800-748-7497**

www.commercialturfandtractor.com

**NEW JERSEY
DOUBLE D TURF LLC
MONROE TWP., NJ
732-241-7378**

www.doubledturf.com

**TENNESSEE
Liles & Tippit
800-238-4406**

lilesandtippit.com

(800)426-3634 • sales@turfprideusa.com • www.turfprideusa.com

Simple Dimple Seeder



**Designed for use
on fine to regular
turf areas and is
easy to use.**

1-800-665-2696 • www.sportsturfmagic.com



TAKE THE GOLF INDUSTRY'S MOST SOLID INFORMATION & NEWS SOURCE WITH YOU, WHEREVER YOU GO!

Control Lake and Pond Erosion with Bioengineered Living Shorelines

Shoreline erosion can be an eyesore on the course as well as a danger to golfers. Through SOLitude's partnership with SOX Erosion Solutions, we are proud to offer innovative solutions that halt sediment migration and restore damaged banks. Shore SOX and Dredge SOX technologies utilize patented mesh barriers that are used to create stable, long-lasting living shorelines.



Watch a FREE recording of our Erosion Control Webinar: solitudelakemanagement.com/control-erosion

Water: It's 71% of your world... 100% of ours.

855-282-3496 • solitudelakemanagement.com

For a full list of our superior service offerings, visit www.solitudelakemanagement.com/services

SOLITUDE
LAKE MANAGEMENT
A Rentokil Steritech Company



Quality Turf Equipment Replacement Parts & Accessories *Since 1971*



To Fit: Toro, John Deere, Jacobsen, Beck, Bobcat, Brouwer, Bucyrus, Bunton, Core Master, Cushman, Dandle, Excel, Exmark, FMC, Ford, Graden, Gravely, Greencare, Hahn, Jerry Clipper, Kato, Kesmac, Land Pride, Lastec, Lely, Lesco, Locke, Mott, National, Nunes, Poyntz, Princeton, Progressive Turf, Ransomes, Redexim, Rhino, Roseman, Roxy, Ryan, Salsco, Scott Bonner, Sensation, Sisis, Smithco, Snapper, Southern Green, Steiner, Terra, Texas Sod, Trebro, Turfco, Turflife, Wiedenmann, Woods and more!

EQUIPMENT PARTS

GOLF COURSE ACCESSORIES

ATHLETIC FIELD

GROUNDS MAINTENANCE

POWER EQUIPMENT

GROUNDS MAINTENANCE

ELECTRICAL

MAINTENANCE TOOLS

SAFETY & SECURITY

WORK WEAR

Order Today • Ship Today
www.rrproducts.com

(800) 528-3446
(520) 889-3593

For over 30 years, Wesco Turf, Inc. has been the golf & grounds equipment and irrigation leader in Florida and Southern Georgia as well as a worldwide provider of quality pre-owned golf course and turf equipment.

**READY
TO
SHIP**



2015 Toro Multi Pro 1750
Ready to Ship!
1782 Hours
\$22,995



2015 Toro Sand Pro 5040
Flex Blade - Tooth Rake
1961 Hours
\$12,995



2015 Toro Topdresser 1800
Stand Included
\$4,995

**READY
TO
SHIP**



2015 Club Car Carryall 500
Canopy and Windshield
928 Hours
\$7,299



2015 Toro Pro Core 864
Your choice of Heads & Tines
\$17,995



2016 Toro Pro Force Blower
Wireless Remote
1185 Hours
\$5,799

**FREE
FREIGHT!***



2012 Toro Greensmaster 3250-D
11 Blade Cutting Units
1814 Hours
\$15,495



2015 Salsco HP11
Trailer Included
1073 Hours
\$8,799



2015 Toro Groundsmaster 3500
ROPS - Lights - Diesel - 3WD
1736 Hours
\$21,495

*Free freight promo applies to retail orders received before 4/30/20 shipped within the continental United States

Free Freight on any Greens Roller!*

Worldwide Shipping - 90 Day Warranty - Over 600 Items in Stock - New Items Weekly
888-245-4063 • preowned@wescoturf.com • wescopreowned.com

READY... WILLING...

Abell Turf and Tractor



PARTS SPECIAL!

- John Deere 1200A Carb -- \$155 Best Starter prices around... Call to check pricing
- John Deere Aercore 800 lift actuator direct replacement!!! Only \$325 each! Plug and play
- Progressive Pro Flex PTO shafts complete!! Replaces # 521738 ... \$560 plus shipping!
- Progressive Pro Flex 120 complete blade sets!! Replaces # 522374 and 522372... \$125 plus shipping per set!
- Pro Gator Radiator Fans!! Replaces# AM129853... \$175.00 plus shipping!

TWO LOCATIONS TO SERVE!

Canton, GA
Loxahatchee, FL

Call Franklin Abell

(678) 296-0822

fabell@abellturf.com



Toro 3320 Tri-Flex, 3wd units -- 2 to choose



Toro 3420, 3WD Tri-Flex mowers, 2 to choose



2 x 1200A's to choose... one with only 350 hrs!



Toro 5800 Sprayers, 2 to choose, low hours!



Toro 3300 Triflex mowers... 6 to choose, 2015 models with under 1000 hrs!



Demo model Ryan Jr. Sod Cutter



Ditch Witch Trencher



Rayco-RG-1625-Stump-Grinder



Toro 1750 Sprayers, 3 to choose 2016 and 20017 models



Demo Model Smithco V62 sweeper...like new



Late Model Toro 1250 Sprayers... fully refurbished



HDX Workman, 4wd, 2 to choose low hours!



Late model Toro 5510's, some with 4WD



Arag Sprayer Valves -- for Toro, Jacobsen John Deere Sprayers! Much cheaper than OEM.

Seats for Sale!

only \$100 ea
+ shipping

Fit's any Jacobsen, John Deere, or Toro machine and utility vehicle in the mfg.'s color (grey or yellow)

ABELL TURF RENTS!

Toro 648's, Toro 1298 w/tractor, Fairway Verticutters, Material Handlers, Greens Rollers... and much much more! Call for details!

ALL MAJOR BRANDS AVAILABLE WE SHIP WORLDWIDE
60 DAY WARRANTY ON ALL PURCHASES LEASING AND FINANCING AVAILABLE

www.AbellTurf.com