



the golf superintendent's monthly buying guide

Delivered Monthly to the Superintendent of Every Golf Course in America



# The Pride of Endicott, New York

Visit us at Booth #11059 at the Golf  
Industry Show in San Antonio, TX

## The crew at En-Joie Golf Course

Bill Mooney

Kevin Watkins

Joe Mooney

John Hartman

Anthony Chapman

Tom Corcoran

Sam Espe

Derek Heide

Nate Beach

Josh Olson

Chris Howell

Randy Johnson

Jacob Evanitsky

Anthony Node

Justin Zimmer

Kyle Corcoran





**DON'T TRADE IN YOUR EQUIPMENT  
WHEN YOU CAN HAVE US REMARKET THEM  
TO OVER 10,000 GOLF COURSES**

- We offer Complete Liquidations
- Sellers: Turn your inventory to CASH
- Buyers: Purchase at Wholesale Prices
- Fleets of Golf Cars in Stock for Purchase Prior to Auction
- We offer Appraisal Services and Inspection Services
- Asset Auditing Services Available
- Nationwide Transportation

**WE ARE THE LARGEST  
AUCTION FIRM IN THE  
GOLF BUSINESS**

**Asset IQ**



**Asset Intelligence Group, Inc.**

Locations in Texas, Arizona, North Carolina, Ohio & Florida

Asset IQ – [www.assetiqllc.com](http://www.assetiqllc.com) • 513-724-1133 | [media@assetiqllc.com](mailto:media@assetiqllc.com)

Golf Marketplace – [www.golfassetmarketplace.com](http://www.golfassetmarketplace.com)





**2013 Toro Rake-o-Vac**  
23hp Kohler engine; 4 cu yd capacity; rubber fingers sweeping head  
3 to choose from



**2013 Toro Greens Master 3150-Q**  
11- blade DPA reels; ROPS; lights; grass catchers  
6 to choose from,  
All less than 1000 hours



**2011-2014 Toro Groundsmaster 3500D sidewinder**  
3WD, ROPS  
7 to choose from



**2012-2014 Toro 4500D**  
4WD; 9ft cutting width; ROPS; Cool Top  
6 to choose from



**2014 Toro Workman MD**  
Electric bed lift; brush guard  
7 to choose from



**2008 Jacobsen GA-24**  
8hp Briggs & Stratton  
\$2,750



**2010 John Deere Precision Cut 7500**  
\$11,500



**2007-2014 Foley Accumaster 652**  
Automatic reel grinder  
5 to choose from



**2007 Foley AccuPro 670**  
Automatic bedknife grinder  
2 to choose from



**2014 John Deere ProGator 2020A**  
With HD 200 sprayer  
200 gallons; TeeJet controller; foam marker  
3 to choose from



**2013 John Deere 1200 Hydro**  
3WD; manual front plow; hyd rear rakes  
6 to choose from



**2013 Buffalo Turbine KB4**  
debris blower  
27 hp kohler engine; wireless remote  
4 to choose from

**Call for Pricing!**



**\*All machines sold reconditioned and covered by our warranty**

**Phone: (352) 588-3092**

**Toll-Free: (866) 588-3092**

**globalturfequipment.com**





# BETTER THAN PLANT FOOD

GIS Booth  
#11109

Reduce your  
inputs

**Help improve** the performance of high-quality turf grass with REV Turf Pro Formulation.

Due to the inert nature of topdressing with Straight sand, golf courses and sports fields soil tend to lack soil Structure and retention. REV Turf Pro will enhance soils by helping to improve cation exchange capacity, nutrient holding, and water retention.



SAVE 30% OR MORE IN OPERATING COSTS!

Simply better with REV Turf Pro Formulation

800.477.8415 • [dakotapeat.com](http://dakotapeat.com)

PO Box 14088 Grand Forks, ND 58208



# FROM PEOPLE TO PRODUCTS, WE ARE YOUR PREMIER PROVIDER

When you are short of help, our products will not let you down. From fertilizers to equipment, Wilbur-Ellis has what you need for your business to GROW.

[pro.wilburellis.com](http://pro.wilburellis.com)

Find your local specialist at [locations.wilburellis.com](http://locations.wilburellis.com)



For information only. Not a label. Prior to use, always read and follow the product label directions. WILBUR-ELLIS logo, and Ideas to Grow With are trademarks of Wilbur-Ellis Company. K-1217-559

**Aqua Control**  
WATER FEATURES

**DISPLAY AERATORS  
& FOUNTAINS**

**LED underwater  
fountain lights.  
Enhance and  
lower cost.**

**WATERFALL**  
*Pump Systems*

**Available in a variety  
of system options!**

[www.aquacontrol.com](http://www.aquacontrol.com)

**800-377-0019**



**WESTERN  
WOOD  
STRUCTURES**  
Working Wonders with Wood

[www.westernwoodstructures.com](http://www.westernwoodstructures.com)

**3 Span Side Girder Bridge  
6' Wide x 101' Long  
Alaskan Yellow Cedar Glulam  
Brentwood Country Club  
Los Angeles, CA**



**800-547-5411**  
Tualatin, Oregon



**CEO/Founding Publisher:** James "Tim" Wilson

**Managing Editor:** Sharon Scott, RRP;  
SharonINK@thetrades.com

**Sales Manager:** Marla Carroll; Marla@thetrades.com

**Layout/Design:** Ken Rowland; golf@thetrades.com

**Online Media:** Carrie Vandever;  
news@golftrades.com

**Editorial Assistant:** Abigail Wilson

**Send Press Releases:** News@GolfTrades.com

**Contributing Writers:** Linda Parker, Jay Flemma,  
Jeff Shelley, Andrew Penner, Brian Duffy

**Marketing & Sales Office:**  
20 Our Way Drive, Crossville, TN 38555  
phone: 931-484-8819 • fax: 931-484-8825

Marla Carroll; Marla@thetrades.com  
Connie Madril; Connie@thetrades.com

**Media Kit Requests:** 931-484-8819;  
adrep@thetrades.com  
**Reprints:** info@thetrades.com  
**Subscribe:** subscribe@thetrades.com

**Editorial Office**  
Trades Publishing Company, Inc.  
PO Box 1364, Crossville, TN 38557

**Send your comments,  
suggestions to  
golf@thetrades.com.**

**If you would like to  
contribute an article,  
or have a bit of news  
you think other  
superintendents would be  
interested in please email  
golf@thetrades.com or  
news@golftrades.com.**

The Golf Course Trades, established 1990, is a super-tabloid buyer's guide publication targeted specifically at the golf course superintendent. The Golf Course Trades offers display advertising, a categorized supplier directory, press releases, and extensive product reviews for heavy equipment. GolfCourseTrades.com is an extension of the magazine with a complete supplier guide for everyday use on the course. The Golf Course Trades currently mails to 18,955 golf course superintendents and product vendors in the United States. A digital copy of the publication is online as well at GolfCourseTrades.com.

# contents



## features

**The Pride of Endicott, New York ..... 14**

By Linda Parker

**It's More Than a Grind: Part Two.....18**

By Brian Duffy

**Superintendent Tyler Otero Keeps  
Garden State Courses Immaculate ... 22**

By Jay Flemma

**Part 2: Pioneers of the Golf Industry  
--Francis Ouimet..... 28**

By Jeff Shelley

**AgSource: Your Turf Testing Partners  
for 60 Years. .... 34**

**Golf Course Architect Kevin Norby  
has Completed a Major Renovation  
at Flood Ravaged Meadowbrook Golf  
Club.....40**

## company spotlights

**Foley United: Grinder Innovation  
Continues .....36**

**U.S. Aqua Vac, Inc.: America's #1 Pond  
Cleaning Company ..... 38**

**Trending .....10**

**Industry Calendar.....40**

**Trades Place .....42**

**Supplier Directory .....44**



**All articles are online for ease of  
reading & sharing.**

**VISIT US TODAY!**

**WWW.GOLFCOURSETRADES.COM**



# REPLACEMENT ENGINES AND **ENGINE** **INSTALLATION KITS**



**ALL KITS GUARANTEED**  
*SO YOU ARE 100% SATISFIED*



**UNLIMITED TECHNICAL SUPPORT**  
*WITH EVERY COMMERCIAL-GRADE SOLUTION*



**WE SERVICE ALMOST EVERYTHING**  
*INCLUDING MOWERS, UTILITY CARTS, SKID LOADERS  
TURF AND MAINTENANCE EQUIPMENT*



**FREE SHIPPING**  
*WITHIN CONTINENTAL UNITED STATES*

# REPOPOWER

## 800.700.9501

[WWW.REPOWERSPECIALISTS.COM](http://WWW.REPOWERSPECIALISTS.COM)

[INFO@REPOWERSPECIALISTS.COM](mailto:INFO@REPOWERSPECIALISTS.COM)



# WE BUY SELL & TRADE TURF EQUIPMENT



## VALUETURF, LLC

Family Owned & Operated  
Buffalo, NY



## LARGE PRE-OWNED INVENTORY

Too many items to list  
call for details

**DISTRIBUTOR FOR:**  
Buffalo Turbine  
Speed Roller  
Turftime Equipment  
Sandstor  
Bannerman  
Maredo  
Sweep-N-Fill  
Turf Pride



John Leising - (716) 697-2351 • Jack Leising - (716) 697-9403

[www.valueturf.com](http://www.valueturf.com) • [valueturf@hotmail.com](mailto:valueturf@hotmail.com)



## Microbial Biotechnology for Plant Nutrition

### TAZO® Technology

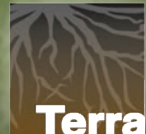
- Fixes Nitrogen
- Enhances Root Growth
- Azospirillum based

Most technically  
advanced biofertilizer  
on the market.

GIS  
Booth  
#32089

*"I'll take roots like this in  
July all day long"*  
-Bob Porter  
Hiawatha Golf Club

www.terramax.com



Maximizing Earth's Potential

**www.TerraMaxTurf.com**  
**952-657-5592**



Research Driven,  
Proven Results™

## INTRODUCING THE NEW FACE OF GRIGG™

Premier turf products, backed  
by science and research

Since 1992, GRIGG has been committed to bringing new high quality, science-based nutrition products to the golf and sports market. GRIGG products are backed by university research and field testing, and customers are supported by seasoned GRIGG agronomists and turfgrass professionals. These are a few of the reasons GRIGG products are used and trusted by some of the most notable golf courses and sports stadiums in the world.

Visit GRIGG, BRANDT® and BRANDT® iHammer  
at 2018 GIS, BOOTH #6113

For a distributor near you contact:  
GRIGG: 1 888 246 8873 or [www.grigg.co](http://www.grigg.co)

GRIGG is part of Brandt Consolidated, Inc.  
[www.brandt.co](http://www.brandt.co)

## The Original and Most Powerful Turbine Blower



CYCLONE PTO

CYCLONE KB4

GIS Booth  
#23109

(716) 592-2700  
VISIT OUR **WEBSITE**  
[BuffaloTurbine.com](http://BuffaloTurbine.com)

DON'T SETTLE FOR **KNOCKOFFS!**





## Highlands Falls Country Club Course update 12-1-17

So far the weather during the off-season has been very mild and that has helped us focus on our winter projects with little distraction. The only thing that has slowed our progress has been our staff taking their much needed vacations.



Trimming rhododendrons and tree removal has been a major focus for our staff. We have completed a thorough trimming of the #2 tee complex and are currently working on the #6 tee complex. Once we finish at #6, we will be focusing on the #3 and #5 tee complexes. This trimming is long overdue and will help to open the holes up for play while also improving the turf by allowing for more light.



We have also completed a couple of small but necessary projects. First, we added additional



drainage along the cart path on #2 and also replaced a main drain pipe that had been crushed by a boulder. The second project was the widening of the approach at the ninth green. By removing the rough sod and hauling in several loads of dirt, we were able to double the size of the approach.

In addition to the course projects, we have been busy with the croquet expansion. After all of the blasting was completed, our staff spent several days collecting rock for future landscaping projects. We have also removed some of the sod from the old lawns and used them on the course. As for the rest of the project, it is going very well. Boulders and fill dirt are now coming in at a steady pace. About 25% of the new rock wall is complete. The footers for the pavilion have been poured and some of the utilities have been installed. With good weather, I expect the slab for the pavilion to be poured by the end of next week.

*From the blog of Fred Gehrisch, CGCS  
Superintendent at Highlands Falls Country Club  
[highlandsfalls.blogspot.com](http://highlandsfalls.blogspot.com)*

## did YOU know?

There's a dip holder that clips onto your car's air vent and holds almost any fast food sauce container so that you can dip and drive without making a mess.

## Winter Play/ Winter Set up



Winter is coming pretty quickly, at least by the calendar on December 21st. With the arrival of winter comes some changes to the golf course.

### Snow and Ice

Course is closed when there is snow and ice on the course. Normally the greens are the last to clear because of the short height of the turf. No golf during these periods. Sometimes it clear enough for walking without clubs which we don't mind and if you want to bring your furry friend along, feel free to do so. You might just stop in Pro Shop if someone is around and let them know you are out there.

### Tee Markers

All tee markers are removed and brought in for the winter to repair and keep in good shape for the main season. Please play from where you like on the teeing ground you chose. If you are playing with more than 1 group and you have a game going on, use the 2 or 4 step rule forward or backward from a white marker or blue marker so everyone does not play from the marker. Playing from the same spot day in day out creates excessive wear to the teeing surface, especially the dormant zoysia. Same goes for single groups, go to an area of the tee that is showing less wear and tear over the winter, not completely matted down or multiple divots in the same area on par 3 holes.

### 2 Holes per Green

Also, we have 2 holes in each green at this time. If you have more than 1 group playing on a warmer day with a game going on, place the flag pole



back in the same hole but if you are a single group, please move the flag pole to the second hole. This moves wear around on greens. If warm days occur during the winter and the greens are thawed, the staff will move the holes if we have a great deal of play, they will do so to reduce wear and tear on specific areas.

Freezing/Thawing Greens

I prefer greens to be either completely thawed or completely frozen to reduce damage during the winter season. It becomes problematic for us when greens go into a deep freeze cycle in late December/January and then begin to thaw. Once they begin to thaw and it moves into the top 1-2" of the green surface, we will usually close the course until the thaw comes completely out of the greens. This prevents root shearing and deep imprinting from foot prints. I will discuss this issue in the next few weeks with pictures and more detailed information.

Appears we are in a cycle of cold days followed by some nice days. Wednesday, Saturday predicting 50's and Sunday pushing 50.

From the blog of Joe Wachter  
Superintendent at Glen Echo Country Club  
geccgcm.blogspot.com

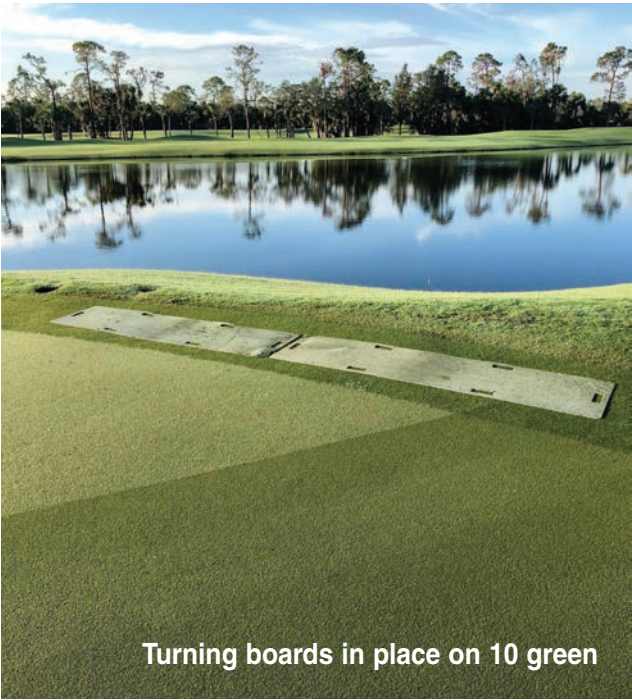
did YOU know?

When a falconer wants to breed their birds, they let the male bird mate with their head. A falcon born in captivity imprints on its falconer, and, after bird puberty, it might see them as a mate. If the falconer can impress the bird with a seductive mating song, it copulates with their special sex hat, which collects the semen for artificial insemination.

The face of an unknown dead woman inspired an entire generation of culture in early 20th-century Paris. According to legend, after the drowned woman's body was pulled from the Seine River, a man at the morgue found her so beautiful that he had her death mask created. Known as the Stranger of the Seine, it was later reproduced so many times that it became a fixture of Paris Bohemian society.

Reel Maintenance

During the winter golf season, the greens at Olde Florida Golf Club are single cut, single cut and rolled or double cut every morning in advance of play. The approaches to the greens, and the chipping areas around the greens are also cut several times a week. In addition, the traffic on and off the greens from golfers increases dramatically in the winter months. Consequently, extra care is important to maintain healthy turfgrass on the 48" collar that surrounds the putting surfaces.



Turning boards in place on 10 green

To help reduce the wear on the collars, the golf course operations staff utilize turning boards from November to March. This is the time of year that the grass is growing the least, and the traffic from golfers and the mechanical stress from maintenance equipment is at its highest.



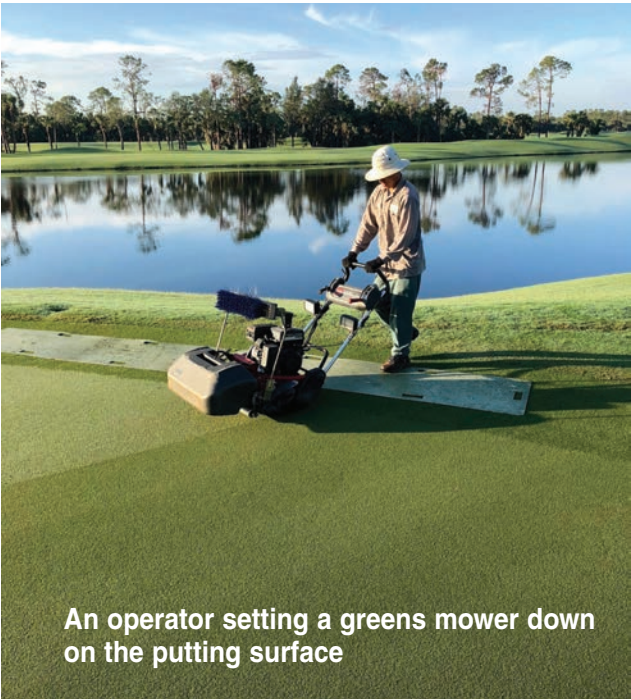
An operator disengaging a greens mower on a board to make a turn

The turning boards we use at Olde Florida are made of high density polyethylene and measure 24" by 96". There are handles cut into each to help with the transport and movement of the turning boards. When cutting greens or approaches, each operator has at least four boards in their possession. When the green is being mowed, two or three boards are placed at each end of the green. The operator moves the boards after six to eight turns of the greens mower. The photos below depict the process.

Even with the turning boards in place, the collar and greens perimeters receive significant wear



An operator engaging a greens mower on the board to make his next pass on the putting surface



An operator setting a greens mower down on the putting surface

during the winter golf season. To help reduce compaction and encourage growth the collar and greens perimeters also receive periodic supplemental fertilization, hand watering and solid tine aeration or water injection aeration during the winter golf season.

From the blog of Darren J. Davis, CGCS at Olde Florida Golf Club  
darrenjdavisgcs.blogspot.com

did YOU know?

Traditional nativity scenes in Catalonia sometimes include a figure of a guy pooping. He's called El Caganer, which literally means 'the crapper' in Catalan. He's been around since at least the 18th century, and he's usually hiding in the corner with his pants pulled down.





2013 Jac GMII Front Blade & Rake  
Have 2 2100 Hrs **\$7,500/ea**



2013 Turfco 1550  
**\$9,500**



2013 Dixie Chopper 2750  
Low Hours **CALL FOR PRICE**



John Deere 800 Aer-Core  
Have 2 **CALL FOR PRICE**



Toro 3100D Sidewinder  
(Have 3) Low Hours **Starting at \$9,500**



2013 Turfco Blower w/ wireless remote **Call for price**



2013 Cushman SprayTec  
(400 hrs) **\$18,000**



Quality Pre-Owned Turf & Grounds Maintenance Equipment

**WE TAKE CARE OF YOUR NEEDS**

**866-331-6621**

If you don't see it listed, give us a call  
.....we probably have it!!!!

## Miscellaneous Items/CALL for Price

Agrimetal BW360 Blower  
2011 John Deere TE Gator Electric (Low Hours)  
2012 John Deere TE Gator Electric (Low Hours) Accu-Pro  
Reel Sharpener Foley United Bedknife Grinder  
2012 Toro 5 Gang Great Shape  
2010 Jac AR3 1800 Hours \$10,000  
Numerous EZ-GO Electric Golf Carts  
2010 Toro 3150 3WD 8 Blade  
2010 EZ-GO Beverage Cart  
Used Core Harvester \$2500 Good Shape  
John Deere 8700 Verticuts \$5000  
John Deere 8700 or 7700 Reels \$5000  
Toro Greens Rollers \$2000

2009 Toro 4000 2200 Hrs \$22,000  
2011 John Deere 1200H Trap Rake \$7500  
2014 Club Car Presidents (Green) Have 160  
(2) Turfco Blowers \$5500/ea  
1999 Foley 630 Grinder w/ 650 Bedknife Grinder \$12,000/set  
2012 Toro 3500 Good shape!! \$20,000  
John Deere 2500B verticuts w/ titanium blades Like New!  
John Deere 3235B Low hours. (Have 3)  
(10) 2011 Jacobsen 322 Eclipse Walking Greensmowers  
(10) 2010 Toro Flex 21 Walking Greensmowers  
(5) 2011 John Deere 220 Walking Greensmowers w/trailers  
(4) 2011 John Deere 260 Walking Greensmowers w/trailers  
2011 Toro 5800 Sprayer



1999 Foley 670 Bedknife Grinder, 1999 Foley 650 Reel Grinder  
Set: **\$27,000**



2013 Cushman Turf Truckster Have  
2 1200 Hrs **\$14,000/ea**



2010 Toro 3150 11 Blade DPA  
Heads Low Hours **\$16,000**



2015 EZ-GO TXT Electric Cart  
**Call for Price**



2011 John Deere 8500 4WD,  
1800 Hrs **\$14,000**



AgriMetal Wireless Control  
Blower **\$4,500**



2009 Jacobsen AR522  
2100 Hours **\$16,000**



2013 Toro ProCore  
**Call for Price (Have 2)**



2009 Toro 5210 2WD  
**\$13,000 ea**



Toro 3500D Great Shape!  
**\$12,000**



2012 John Deere 8800 Med.  
Hours Great unit! **\$18,000**



2013 Jacobsen GPlex  
400 Have 4 **Call for Price**



2013 Jacobsen LF1880 1400 Hours  
Have 2 **\$13,000 each**



2013 Jacobsen LF510 4WD  
**CALL FOR PRICE**

**731-247-3264 • futuresgolf@wk.net**  
**1180 Puryear Country Club Rd., Puryear, Tn. 38251**



# Bunker Cleaners

## SAND MAN



## RADIUS



Barber bunker cleaners remove unwanted debris from your bunkers including cigarette ends, bottle caps, pine cones, wood, stones and rocks as small as 3/16"

Barber SAND MAN and RADIUS Features:

- ◆ High Flotation Tires
- ◆ Tight Turning Radius
- ◆ Interchangeable Screens
- ◆ Self-propelled
- ◆ Reliable Gasoline Engine
- ◆ Simple Operation



H. Barber & Sons

# BARBER

[hbarber@hbarber.com](mailto:hbarber@hbarber.com) [www.hbarber.com](http://www.hbarber.com)

(203) 729-9000 (800) 355-8318



# The Pride of Endicott, New York

by Linda Parker

Golf Course Superintendent Anthony Chapman is much like other residents of the Triple Cities of Binghamton, Johnson City and Endicott, New York. He is proud of his beautiful home town, proud of the Endicott football team and immensely proud of the nearby En-Joie Golf Club. Unlike other residents, however, Anthony carries the responsibility of the community's picturesque 18-hole golf course, built on the rolling hills bordering the Susquehanna River, squarely on his shoulders.



He and his crew must ensure the playability of the course for some 27,000 rounds of golf enjoyed each year by area residents and regional tourists, along with maintaining tournament-level conditions for an annual PGA Champions Tour event. To make the task even more challenging, the course's scenic locale is, from time to time, the site of horrendous flooding, the result of weather conditions that Anthony describes by saying, "There's no real normal anymore."

## A Historic Course with a Prehistoric Twist

The En-Joie Golf Club was established in 1927 by George F. Johnson. In 1899, Johnson had transitioned from foreman to co-owner during the takeover of a shoe factory that eventually became the Endicott-Johnson Shoe Company. Johnson, widely known as George F, believed that keeping his 20,000 workers happy

increased productivity and decreased the likelihood of unionization. Motivated by this philosophy, George F facilitated the construction of libraries, theaters, swimming pools, parks and stores and even offered a way for employees to build and finance homes.

History cites George F, a passionate golfer himself, as saying, "Some foolish workers got it in their heads that golf was only for the rich... golf is just as good for hard working shoemakers as it is for the tired businessman...the poor can play golf just as cheaply as going to the movies, and it's better for their health. Give men comfort to live and play then you can work them hard, and they will be ready for more."

The course's original Ernie Smith design was flat and mostly treeless, and a round of golf cost shoe company employees a quarter. By intention, there was no rough, leaving little place to lose the golf balls Endicott-Johnson was manufacturing, in addition to its production of leather shoes.

Over the years, the En-Joie Golf Course was redesigned and enhanced, upgrading the facility so significantly that by 1971 it was a PGA Tour stop, hosting the Broome County Open. In 1972, the event was renamed the B.C. Open to honor Endicott resident and comic strip artist, Johnny Hart, who enthusiastically loaned his famous B.C. brand and his personal support to the tournament. With the warm hospitality of the community and Hart's iconic cave men and women characters, B.C., The Fat Broad, Thor, The Cute Chick, Grog and others used as part of the tournament's marketing, the B.C. Open soon became a favorite event for both players and fans.

Although 2006 was scheduled to be the final year of the B. C. Open, the culminating event was not played at En-Joie. Historic flooding of the Upper Susquehanna basin occurred in late June of that year, forcing tournament officials to relocate the event to Atunyote Golf Club at the Turning Stone Resort and Casino in Verona, N.Y. Despite the damages, by 2007, En-Joie Golf Club was again hosting a professional tournament and writing a new chapter in its history as the home of the Champion's Tour Dick's Sporting Goods Open.

## No Real Normal

Anthony, a 1993 graduate of Binghamton High School, originally studied Criminal Justice at Broome Community College before relocating in 1996 to Boynton Beach, Florida. As part of the Palm Beach County Parks Department, he soon transitioned to the city of Lantana's

22-acre sports turf facility. Continually climbing the ladder as a municipal employee, Anthony concurrently expanded his knowledge of turfgrass. He became a member of the Florida Turfgrass Association, the Sports Turf Managers Association, earned certificates from Palm Beach Community College in both turf management and turfgrass science, and earned a certificate in turfgrass pest management from Purdue University. In 2005, Anthony was promoted to Director of the Lantana Parks and Recreation Department, where he oversaw the sports fields, building maintenance, marine safety, forestry and the community's parks.

But 2007 took Anthony back to central New York. His wife Andrea pursued her doctoral, and he went to work for Superintendent Rocco Greco at En-Joie. Although he had missed the 2006 flood, he was up to his hip waders in 2011 when Tropical Storm Lee took the Susquehanna River to record levels and flooded sixteen of the eighteen holes at depths of 15 to 20 feet. To add insult to injury, a warm spring led to more flooding the following March.

"There was raw sewage running down the cart paths," said Anthony. "We wore masks, we all got tetanus shots and we learned to deal with



the smell of death. There were things swimming in the water you'd never seen before. It certainly didn't look like a golf course. The only thing to do was just ban together and go after the clean-up, step by step."





## We thought you'd enjoy, "A Quick Nine with Anthony Chapman, GCS En-Joie Golf Club"

### Let's Start with Some Basics:

Q: Where did you go to school?

A: SUNY Broome. Turfgrass/Pest Management Certificate, Purdue,

Q: What or who led or inspired you to become a superintendent?

A: Former boss at En-Joie, Rocco Greco. I started in Sports Turf in 1996 in South Florida.

### More about Anthony Chapman:

Q: Are you married, single or somewhere in-between?

A: I'm married.

Q: Do you have children, and if so, how many?

A: 2 children – 1 boy (8) and 1 girl (3).

Q: Do you have pets?

A: No

### On the Job:

Q: What is your biggest challenge at your golf course?

A: Maintaining tour-like conditions leading up to the Dick's Sporting Goods Open, while averaging 200 rounds per day.

Q: What do you love most about your job or your facility?

A: Job- I love driving the course when the sun is setting and admiring its beauty. Facility- It's a relatively small area and all the holes are close to each other.

### Off the Clock:

Q: What's the best round of golf you ever played and where?

A: 74 from the tips at Lacuna Golf Course, Lantana, Florida.

Q: Next to golf and your family, what's your favorite way to spend your free time?

A: Go to sporting events.

Remarkably, En-Joie Golf Club was in immaculate condition when the Champions Tour players teed up that summer to play the 2012 Dick's Sporting Goods Open.

As Anthony explained, "We are extremely proud to have the Champions Tour coming to play here. From the minute we start work each spring, everything we do is directed toward preparing the course for that event. Although no one can sustain championship conditions every day, the efforts we make to prepare and protect the course for that tournament result in extremely nice playing conditions for daily play."



## The Real Challenge Isn't Floodwaters or Prepping for Tour Events

Anthony is quick to point out that whether a course is large or small, all superintendents face a common challenge: golf courses guzzle hours, days, months and years out of their lives. As much as superintendents may love their work, when the responsibility of a golf course rests on their shoulders, they continually find themselves torn between job and family.

Anthony and Andrea, now a child psychologist practicing in Endicott, are the parents of an eight-year-old son, Luke, and a three-year-old daughter, Giuliana. Luke enjoys short visits to the course and the pride of hanging out with dad, opportunities Anthony strives to create when possible.

"It's hard to raise kids, and I feel guilty about working so much. I try to give Andrea any breaks I can," said Anthony. "Giuliana is still a little young to spend much time at the golf course with me, but I love the time I spend at En-Joie with Luke.

"As a family, we attend a lot of sporting events together and try to really make the most of the time I have away from the job. But we are also like a lot of other households. Sometimes we are all together in the same room, with each of us doing something different. My wife and I will be on our phones, my son will be playing games on the television, and my daughter will have the iPad."

## There's Family ...and then There's Your Golf Course Family

Anthony radiates pride as he talks about his accomplished wife and beautiful children, but he is clearly also proud of his "second family," his golf course maintenance team. "We see each other," he explained, talking about his crew, "more than we see our families. I couldn't do what I do without my team, including my equipment manager Chris Howell, my second assistant Kyle Corcoran and my assistant superintendent, John Olson. They're the real reason the people of Endicott have a course to be proud of."



Linda Parker has been writing professionally since the 1980s. With clients in finance, sports, technology, change enablement, resorts and nonprofit global initiatives, Linda helps organizations communicate their stories in meaningful ways to the people they most want to reach. She has authored, ghostwritten or contributed to more than a dozen nonfiction books. Linda is a member of the Authors Guild and the Golf Writers Association of America. You can connect with her at [Linda@GlindaCreative.com](mailto:Linda@GlindaCreative.com)





# Jerry Pate Turf & Irrigation

**#1 SOURCE FOR QUALITY PRE-OWNED EQUIPMENT**  
**GOLF INDUSTRY SHOW SPECIALS!**



**2014 Toro RM3100-D**  
 Side Winder, 72",  
 3 w/d, Low Hours,  
 Gold Serviced  
**\$20,500**

**2013 Toro GR3150-Q**  
 3wd with NEW 11  
 Blade Reels, Gold  
 Serviced, 1360 Hours  
**\$19,800**



**Come see  
us at the**



**golf industry show**  
**San Antonio, TX**

**Feb. 7&8, 2018**  
**Booth #24101**



**\$28,500**  
 2012 Toro GM4300-D 4 w/d, Low Hours, Cooltop Canopy, Gold Serviced



**\$5,995**  
 2013 Toro MDX Workman, New Beds, Gold Serviced



**\$19,500**  
 2013 Toro GR3250-D with new 11 blade, Groomers, lights, Gold Serviced, 1475 Hours



**\$9,500**  
 2013 Tru Turf R5211TC Gold Serviced, Excellent Condition, Gas Roller, (2) Avail.



**\$28,950**  
 2014 Toro RM5610, Cooltop Canopy, Gold Serviced, 1241 Hours



**\$14,900**  
 Pro Core 648 with Core Collection, Gold Serviced



**HOT DEAL OF THE MONTH!**  
**Starting at \$16,900**  
 2012 Toro GR3320 Hybrid Greens/Tee Mower, 3w/d, Gold Serviced, Free Set of Reels! While Supplies Last



**\$16,900**  
 2012 Toro GM360 4 w/d, All wheel steer, Gold Serviced, 72" SD Deck, 1396 Hours



**\$20,500**  
 2011 Toro GM3500-D Side Winder, 1,700 Hours, Gold Serviced



**\$22,900**  
 2014 Toro MP1750 Sprayer, 175 Gallon, Loaded, 1700 hours, Gold Serviced



**\$39,500**  
 2014 Toro GM4500-D with Cooltop Canopy, 1988 Hours, Gold Serviced



**2 AVAILABLE**  
**\$27,500**  
 2013 Toro RM5510-D, 11 Blade, Rear Roller Brushes, Cooltop, 1050 Hours, Gold Serviced

**JAW DROPPING PRICES ON OUR MONTHLY SPECIALS!**



**Foley Accu-605 Reel Grinder, Enclosed, Winch, Good Condition**

**WAS \$8,500**  
**NOW \$6,500**



**Toro 2011 GR3150 3wd, 8 bld, 2400 hours,**

**WAS \$9,999**  
**NOW \$7,999**



**Toro 2012-14 Trans Pro 80 Trailers, Flat Ramp**

**WAS \$499**  
**NOW \$399**

**FINANCING UP TO 36 MONTHS\* • WORLDWIDE SHIPPING • WIDE SELECTION OF INVENTORY**

\*(On select items)



@JerryPateCo



Jerry Pate Company



jerrypateco



Jerry Pate Company

**www.preowned.jerrypate.com**

**1-800-282-4792 ext 3204**







turfprideusa.com  
800.426.3634  
sales@turfprideusa.com



## Finish Mowers



## Deep Tine Aerators

## Reels, Bed knives, Ultra Rotary Blades



## Core Collector



## Roller Tamers



## Overhaul Kits



## TRION

## Trion Lifts

Free Standing

Optional Lift Table

New Wider Stance to accomodate the large fairway units

# GREENS ROLLER



MODEL 400



MODEL 660

Chain drive system

- ♦ 6" diam. drive rollers provide maximum traction and efficiency in morning dew condition.
- ♦ Honda 11 or 13 HP motor combines years of reliability with ease of maintenance.
- ♦ The #80 chain drive system provides ease of operation with minimum care.

# AgriMetal

[www.agrimetal.com](http://www.agrimetal.com)

1006, Principale street, Wickham, Quebec, Canada, J0C 1S0  
tel.: 1-819-398-6883, 1-888-398-6883, service@agrimetal.com



# Markers' 2018 "Tee-it-up" promotion

Use Promo Code below for 15% or more discounts!

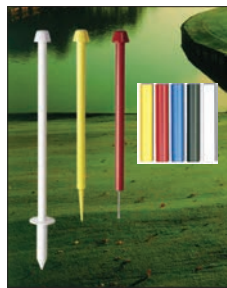
## Driving Range Signs with Frames

### Complete Package

- Easy 37" x 21" slip-on 2 sided yellow sign
- Large 17" Tall Numbers
- Easy to assemble/install High Impact Frame with Ground Sockets



## Course Hazard Markers - many styles



- 36 or 24" poles
- Push-in spikes, metal or plastic, and/or ground sockets



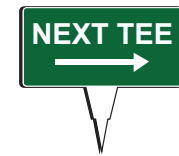
## New VERSALINE™ 6mm Clad Aluminum Course Signs & Tee Markers

### It's All About The Decals!

Round 6" diameter

5x10" Rectangle

5.5" Square



### EASY to change messages and purpose

Simply cover old decals with new



### Need extra revenue?

Add VERSALINE™ sponsor tee markers to golf outing packages

### We can also do Custom Shapes!



Editable Vector Art files required (.pdf, .tif, .jpeg, or .eps)

If you have a new idea, our artists can create a file at minimal cost.

## SmartComb™ & SmoothMark™ Sandtrap Rakes

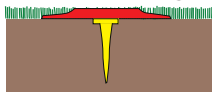
- Durable 1 piece rake heads
- Smoothline designed tines
- Available with 54" long-reach polysteel or honeycomb composite handles



## Fairway Flush Yardage Markers

- Easy to maintain
- Visible 30-40 ft. away
- Long lasting return on investment

### Mow-over design!



We'd like to thank you, GC Trades readers, with a special offer on a great selection of MarkSmart™ products.

A - Visit our website and simply enter promo code "Tee-it-up" at checkout to receive a 15% discount on featured items.

[www.markersinc.com](http://www.markersinc.com)

B - Prefer to speak to a salesperson? Give us a call and mention the promo code for your discount on qualified products.

**Call TODAY! 1-800-969-5920**

**MARKERS, INC.**  
Quality Golf Course Products Est. 1987

Avon Lake, OH 44012

# It's More Than a Grind: Part Two

by Brian Duffy

Recapping of last month's article, the fall aerification is complete and the mowers have gone through their last few mowing's of the season. The reels are dull and bed knives are worn down to a knives edge.

Just as a reminder, be sure to remember of how those worn reels and bed knives can be very sharp. I carry a prominent scar across width of my right middle finger, from nearly cutting it off many years ago while washing and spinning a reel by hand. Before I knew it I caught my finger between the turning reel and bed knife. It took a few years to regain feeling in the end of that finger. Not to mention my left hand has few scars from coming in contact with the grinding stone of reel grinder. These scars reminds me of the scene in the movie "Jaws", where the characters are sitting around comparing their scars. I am sure as Equipment Technicians, we can tell similar stories about our scars. Let's try not to create any new stories. Take the time while working around this equipment to be very conscious of the dangers. Please don't forget to wear your safety glasses.

This month I would like to cover a little more on the importance of the overall condition of the cutting reel and bed knife. The reel and bed knife are the major components of a cutting unit. A new bed knife has hardened

machined steel that makes up the top and front face of the cutting edge. This hardened steel material wears away from the action of cutting the grass, topdressing, back lapping and also overtightening of the reel to bed knife contact. With all these factors involved, the bed knife is



a wear item and is replaced on a regular basis. This replacement can be many times during a mowing season.

The hardened steel cutting material of the reel blades are subject to the same wear conditions as the bed knife. But, the reel is expected to last for many years before needing replaced. Reels are generally replaced when the reel diameter becomes too small to maintain the proper height of cut. As the reel diameter decreases, so does the bed knife attitude and the adequate clearance between the bottom of the bed knife and turf. Bed knife thickness is also an important factor. A thicker knife is desired for longer life and lower budget cost. While at the same time a thin knife provides clearance between the bottom of the bed knife and the turf. Reduced clearance will allow the bed knife to drag the turf and cause unsightly after cut appearance and raise the effective mowing height of cut. In some cases the pressure put on the bottom bed knife will cause rifling of the reel and bed knife. Rifling creates heavy and light contact across the length reel and bed knife in wave pattern of highs and low spots in the cutting surface. The results cause's streaked look to the finish cut of the turf. Rifling can only be corrected by grinding. No amount of back lapping will fix this condition. Another factor leading to reel replacement is bent or broken blades from impact.

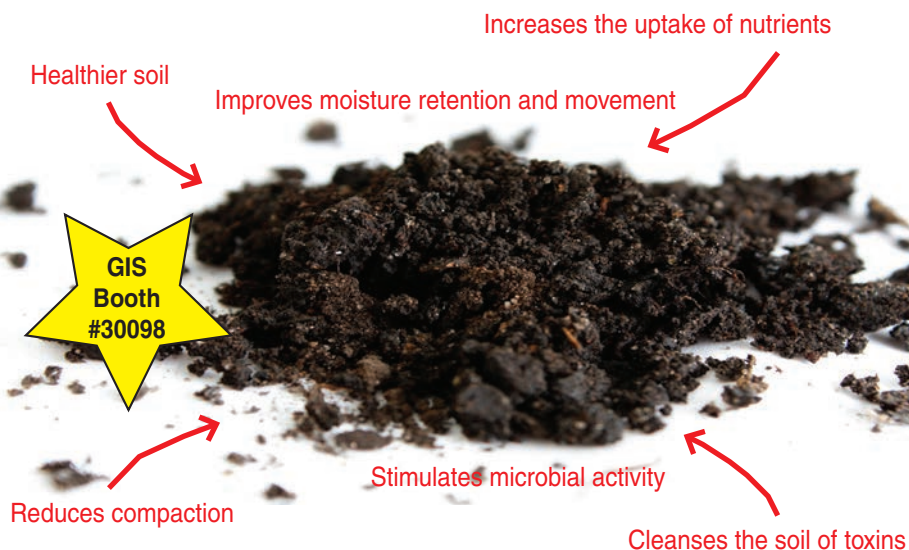


# Humate International, Inc.



Humate International works with GCSAA Golf Course Superintendents

A soil with our unique HUMATE makes all the difference



**1-800-3-WE GROW**

6633 Stuart Avenue, Jacksonville, FL 32254  
Tel: (904) 783-6396 • Fax: (904) 781-6512

[www.humateintl.com](http://www.humateintl.com)

[admin@humateintl.com](mailto:admin@humateintl.com)

**Humate International, Inc.**

Healthy vegetation begins with a healthy soil.

## turf Land Pride GET WORK DONE.

AFM4211

30-65 HP - 11'

- 6" Deck overlap
- Automatic wing locks
- High blade tip speed
- Rear discharge for even dispersal
- Standard anti-scalp rollers
- Narrow transport width



**LP** CONSISTENTLY LEADING THE WAY...

CALIFORNIA  
**GLENN B DORNING, INC.**

Ontario, CA

909-983-2089

[www.gbdorning.com](http://www.gbdorning.com)

FLORIDA  
**MACCLENNY EQUIPMENT & TRACTOR SALES**

MacClenny, FL

904-259-4277

[www.metractor.com](http://www.metractor.com)

**BINGHAM EQUIPMENT COMPANY**

Mesa/Casa Grande/Yuma/Parker/Buckeye/  
Cottonwood/Tucson/Phoenix/Roll

888-969-5516

[www.binghamequipment.com](http://www.binghamequipment.com)



One very important step to take before grinding a reel, is to measure the diameter. Every manufacturer has a specification for the minimum diameter of a reel before it needs replaced. One example is a new 5 inch diameter reel will have minimum wear limit of 4 1/2 inches in diameter. It is waste of time and resources to grind a reel that is already too small in diameter, and in the final step of setting up your freshly sharpened and serviced cutting unit you cannot set the low height of cut needed. At that point you have to start over and replace the worn out reel. Another condition of the reel that has a very important impact on the cutting unit set up and after cut appearance is a tapered or coned shape reel. Tapered or coned shaped reel describes the condition of one end of the reel diameter being smaller or larger than the opposite end.

The reel is designed with twist or helix running the length of the reel blade from one end to another. So by design the diameter of the

reel will begin to get smaller on the leading end that crosses the bed knife first during rotation. The taper will be increased even further when real to bed knife adjustment is more aggressive on one end or the other. For one OEM manufacturer, the maximum allowable taper for all reel diameters is .010 or about 1/64 of an inch. The golf greens average height of cut is .125 or 1/8 of an inch. With this average mowing height of cut, even with the allowable amount of taper can cause an uneven or mismatched cut between cutting units of a triplex



mower and uneven cut between alternating cut directions with a walking mower. Some cutting units are designed and built with adjustments to accommodate some of this taper. The adjustment can be made at one end of the bed bar by an acentric or adjustable pivot point. This will allow an even reel to bed knife contact from one end to the other.

Reel diameter and taper can be measured with several different tools such a large caliper or a Pi diameter tape measure. The grinding equipment manufacturers also offer various set up gauges to achieve the result of putting a reel back into a cylinder shape again.

By taking the time to take a few measurements to verify the condition of the reel, you can set up the grinder accordingly. With little effort you can produce cutting units that are easy to set up the reel to bed knife contact and will cut evenly across the putting surface. Good luck and happy grinding.

Pictures courtesy of Cutter Equipment Co.



Brian Duffy's career spans thirty five plus years in the golf industry. With a diverse background of working on golf courses and turning wrenches on all types of equipment. Plus teaching Golf Course Equipment Mechanics and progressing into turf equipment sales and service. For any questions, comment or ideas contact me at [mxk92@yahoo.com](mailto:mxk92@yahoo.com)



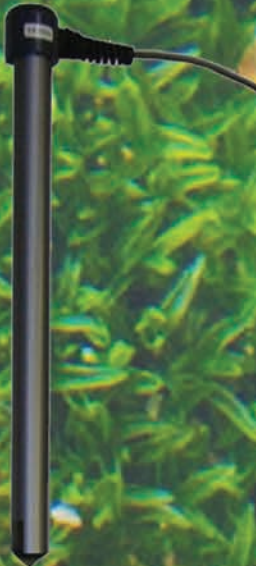
**TUCOR**  
I N C

# Tucor Wireless Control Solutions



**Wireless Valves**

**Wireless Soil Moisture Probes**



**Wireless Green Fan Control**

**Wireless Lighting**

**Wireless Pump Start**

**Pond Aerators**



**Unique, Cost Effective, Reliable**  
**[www.tucor.com](http://www.tucor.com) or 1 (800) 272 7472**



# Fore: Wireless Valve Control using your Existing Irrigation Controllers

Wireless Technology has been used for many years but has not been available to the Golf Industry until 2017. Tucor, Inc. in Pittsburgh, Pa recently released, "Wireless Valve Control" in all markets and it is available and compatible with all existing Golf Irrigation Controllers.

How many times have you heard?

"I just took over this job, and I need to repair or add some irrigation control valves (valve-in-head) sprinklers, globe valves and I do not know where any of the existing wires/infrastructures are",

or

"If I could get a wire or wires to an area on the course, I could vastly improve the conditions".

Being considered the 2 Wire Pioneers in the Non-golf industries, Tucor employees bring 40+ years of Golf Course experience. Meeting and speaking with Golf Course superintendents over the past 24 months we have learned that reliable "Wireless" capabilities can help most Golf Courses today.

If you are considering any of the following projects "Wireless Control" would be a viable option:

- Adding sprinklers or electric valves
- Renovation of small areas
- Wireless moisture sensors
- Repairing valve wire that was damaged over the years
- Adding control to your Green fans
- Controlling water features such as aerators, circulators
- Controlling booster pumps
- Needing to control lighted features, etc.

We have learned many projects were rejected not because of material cost but labor cost. With any one of these projects comes construction/destruction that Board of Directors, golfers do not like to see, especially during the golfing season.

## Comparison – Conventional vs. Wireless

Considered project scenario: Several years ago a Championship Tee was added on Hole number 9. Water was secured from the maintenance building, but control was not available from the Irrigation Controller 375 yards away (across a wetland designated area). Control has become vital, watering manually has created many stressful days, especially during the dry days of summer and the initial investment has been compromised when irrigation was overlooked.

Consider the actual materials cost of each (conventional or wireless) may be the same?

With the Conventional method, labor will be substantially more (hours) when trying to use the existing controller as a solution. You will need approximately 1,200' feet (times 2) of wire either trenched or vibratory plowed through the wetlands (over a bridge) creating some type of cleanup with either option.

With the wireless option, the materials will be a site survey, a Gateway at your controller and a receiver at the Sprinkler (valve-in-head) or a Globe Valve with a DC latching solenoid. Based on actual installations to date, your labor will be approximately 30 minutes at the controller and 30 minutes at each receiver, again based on actual installations to date.

Before eliminating any option based on cost, please do a 10,000' view of each project option. By this I mean estimate your cost of doing the project the conventional way, including locating the existing wires/infrastructure, etc. securing a materials and labor cost. Then compare it to the wireless option. There may be a slight difference but remember, with the wireless solution there is minimal construction/destruction of your golf course and surrounding areas.

For more information, visit [www.tucor.com](http://www.tucor.com), and click on Wireless.

**Wireless will be your Best Solution!**

*Sponsored Content*

**DAKOTA**

800.477.8415 / [www.dakotapeat.com](http://www.dakotapeat.com)



Spread light, heavy,  
wet or dry,  
**nothin' is easier**  
to use or adjust  
than a **DAKOTA**  
**Turf Tender.**  
**Period.**

**GIS Booth**  
**#11103**

**SAVE 25% or more on your  
Topdressing time and labor Cost  
Guaranteed...Contact Your  
Local Dealer for  
A FREE Demo Today.**

**IDAHO\* MONTANA\* N & S DAKOTA\* NEVADA**  
**C & B OPERATIONS, LLC**  
800-823-9242  
[www.deereequipment.com](http://www.deereequipment.com)

**NE OH / NW PA / N WV**  
**SHEARER GOLF**  
855-GOLF-909  
[www.ShearerEquipment.com](http://www.ShearerEquipment.com)

**NJ / NYC / NY LONG ISLAND**  
**STORR TRACTOR COMPANY**  
Branchburg, NJ  
908-722-9830  
[www.storrtractor.com](http://www.storrtractor.com)

**ILLINOIS, INDIANA, MICHIGAN, WISCONSIN**  
**J.W. TURF, INC.**  
Elgin, IL - Alto, MI - Wixom, MI -  
Allenton, WI  
888-959-8873  
[www.jwturf.com](http://www.jwturf.com)

**SC / NC / TN / GA / AL / MS**  
**GREENVILLE TURF & TRACTOR**  
Greenville, SC  
800-485-8873  
[www.greenvilleturf.com](http://www.greenvilleturf.com)

**SE FL / HILTON HEAD / CARIBBEAN**  
**EVERGLADES EQUIPMENT GROUP**  
Boynton Beach, FL / Naples, FL /  
Hardeeville, SC / Alma, GA  
888-746-8873  
[www.evergladesequipmentgroup.com](http://www.evergladesequipmentgroup.com)

**CALIFORNIA**  
**TORRENCE'S FARM IMPLEMENT**  
Thermal  
760-398-4141  
[www.torrences.net](http://www.torrences.net)







Only your budget can tell the difference.

Get the most out of your budget by choosing pre-owned John Deere equipment. Choose from a great inventory of top quality John Deere golf equipment, with seasonal financing options and monthly payment plans available from John Deere Financial. Call your local John Deere Distributor today and find out how you can get John Deere quality equipment at a price that's right for you.



**GREENVILLE TURF & TRACTOR**  
**866-485-TURF (8873)**  
[www.greenvilleturf.com](http://www.greenvilleturf.com)  
 AL • SC • TN • MS • GA • VA

**EVERGLADES EQUIPMENT GROUP**  
**888-746-8873**  
[www.evergladesequipmentgroup.com](http://www.evergladesequipmentgroup.com)  
 SOUTH FLORIDA

**SHEARER GOLF**  
**855-GOLF-909**  
[www.shearerequipment.com](http://www.shearerequipment.com)  
 NE OH • NW PA • N WV

**C & B OPERATIONS, LLC**  
**800-823-9242**  
[www.deerequipment.com](http://www.deerequipment.com)  
 IDAHO • MONTANA • N & S DAKOTA • NEVADA

# Superintendent Tyler Otero Keeps Garden State Courses Immaculate

by Jay Flemma

It was either work at a golf course or a national park, one or the other. That was the decision a young Tyler Otero faced in high school.

"I wasn't a golfer growing up, I was into hunting and fishing," Otero recalls. "It's part of our culture. Where I went to school, we got days off for deer hunting season."



That was central Pennsylvania, not far from the verdant Rothrock State Forest, where Otero's grandfather had a cabin, and the family would go small game hunting for pheasants, rabbits, and the occasional deer. But those heady, halcyon days were more than just warm memories of youth - they spawned Otero's lifelong love of the outdoors.

"I knew I didn't want a nine-to-five office job, I wanted to be outside - it's what I loved. At first I thought I'd go for wildlife and fisheries, but all the big jobs are at national parks out west somewhere, and that was too big a move for me back then," he confided.

It was Otero's future brother-in-law Jason Bell who provided the inspiration for what became Otero's life work. Bell was the assistant super at nearby Ridgewood Country Club, a sporty A.W. Tillinghast private club.

"My brother-in-law coaxed me into working at golf courses because I could work outdoors, but in a metropolitan area," Otero admitted. "I get the best of both worlds."



That was late 1990s, right as jobs in the golf industry were growing and salaries were increasing for course maintenance staff; it was a good time to be coming into the business. Otero also had the added benefit of being from Lewiston, PA - just a few short miles from Penn State and their world class, state-of-the-industry turfgrass management program. At one time, of the top 20 courses in the various national rankings, 18 of those clubs had supers that graduated from the Penn State program.

Otero declared Turfgrass Science as his major immediately upon matriculation and began working at iconic Beaver Stadium as well as all the other



# We're not just in the business... WE MADE IT!



Our large inventory allows us to supply any tire need for any machine or vehicle.

# Pomp's

## TIRE SERVICE

THE Flotation Tire Specialists!



GIS Booth # 29112

Golf Course Superintendents nationwide have proven that Pomp's Flotation Tires are essential during delicate operations:

• TOP DRESSING • SPRAYING • MOWING • BACK FILLING TRAPS • AERATING

The large contact area of the flotation tire effectively distributes load over a broad area. This produces lower unit ground pressure, resulting in minimized soil compaction. Our custom built wheel and tire combinations will convert your golf course equipment into the most productive tools you will ever own.

GOODYEAR  
GALAXY

TITAN  
CARLISLE



FLOTATION TIRE SALES & SERVICE

1037 W. Broadway

Box 637 Monticello, IN 47960

Phone: 574-583-4136 • Fax: 574-583-7267

www.pompstire.com • rzarse@pompstire.com

"The Tire Professionals"  
Since 1939

"We know tires... You should know Pomp's"

For further information call our TOLL FREE number today in the US & Canada:

800-348-2396



ORIGINAL EQUIPMENT  
REPLACEMENT

FLOTATION TIRES • RIMS

• WHEELS • SERVICE

Rims and Wheels: Specially fabricated heavy-gauge rims and wheels are available for custom conversions and original equipment replacement.



intercollegiate athletic fields at Penn State. While there, he also got plum internships, first in Country Club of the Rockies in Vail, Colorado, then later at Kauri Cliffs in New Zealand, the Tom Doak masterpiece on the edge of the world.

To get that gig, he cold-called a guy.

"In the fall of my junior year, I looked up the number one course in New Zealand. At that time, Kauri was 50-something in the world, I emailed the super and asked for an internship," Otero said. "At first he said no because our seasons don't match, but I said I'll take a semester off. So, he said yes, and I did rush visa process. I didn't even have a passport, and then three months later I was on a plane 22 hours to New Zealand."

Moral of the story: It pays to ask, and it pays to be adventurous. With significant experience at a World Top-50 course under his belt, and in an exotic location to boot, Otero could write his own ticket. So he figured "Go big or go home"... after graduation, he immediately went to work for Trump National Golf Club.

No pressure, rookie.

Those formative years saw Otero's career arc streak skyward like a firework. He started at Trump's Bedminster property – the venue for the 2017 Women's U.S. Open and the 2022 PGA Championship - as an assistant superintendent on the as-yet to be built New Course.

But shortly afterwards he was named construction superintendent for the New Course under the Director of Grounds, Greg Nicoll. After completion of the New Course, he spent a season as superintendent of Bedminster's Old Course, before moving up to the position of Head Superintendent at Trump Philadelphia (formerly Pine Hill) then moved back to Bedminster overseeing the entire property as director of grounds.

But by 2014 Otero was ready for a change; it was time to try his hand at stewarding a Golden Age masterpiece into the 21st century. His new job may have only been 40 miles up the road, but it was almost 100 years in the past. North Jersey Country Club's original location dates all the way back to 1899, and the Walter Travis golf course which Otero now tends opened in 1925.

"I was looking to take the next step in my career. NJCC had an excellent reputation, storied history, and the plans to keep enhancing their property which were all exciting to me. My biggest challenge was following in the footsteps of a very successful superintendent, David Dudones (now at

Westchester CC) who had spent the previous 10 years making NJCC a great course," he surmised.

Otero hit the ground running, promptly initiating a tree clearing campaign that opened up vistas across a rumbling piece of property.

"The tree clearing also greatly benefited turf health which was paramount for me....plus our new iPhone system is my favorite new piece of equipment: From communicating with staff, to connecting to in-ground soil sensors, to the complete operation of the irrigation system, so much can be done with a smart phone in today's golf course maintenance world," he exclaimed proudly. "Superintendents are misunderstood, I tell ya. I call it the 'Caddyshack Syndrome' [like the movie]. People think we only grow grass, but there's so much more science!"

Once again, Otero gets to work with Tommy Fazio as the club has hired Tom's nephew to make some cosmetic changes to certain holes. While several intervening architects erased some of Travis's work, about half of the greens are still Travis originals.

When not reporting live from major sports championships or researching golf courses for design, value and excitement, multiple award-winning sports writer Jay Flemma is an entertainment, Internet, trademark, and banking lawyer from New York. His clients have been nominated for Grammy and Emmy awards, won a Sundance Film Festival Best Director award, performed on stage and screen, and designed pop art for museums and collectors. Twitter @JayGolfUSA







**Ww SOD**  
&  
**EQUIPMENT CO.**

OKEECHOBEE, FL • VERO BEACH, FL

SPECIALIZING IN BERMUDA 419 & PRE-OWNED EQUIPMENT

## Contact us at:

Lee - 877-912-REEL (7335) or lee@expressreel.com

Doug - 561-662-1936 or wwequipment@aol.com

Visit us on the web @ [www.wwsod.com](http://www.wwsod.com)

SERVING THE TURF INDUSTRY "WORLD-WIDE" SINCE 1985



2011 Toro GM4500D  
w/2086 hrs - \$27,500



2010/2011 Toro 3100D's  
w/1200-1700  
hrs - \$13,500



Soil Relievers/Vertidrain  
\$7,500



2012 Toro 3320 TriFlex  
Hybrid w/1100 hrs-  
\$15,500



2009 Toro GM3500D's  
2000 hr Range  
\$9,000

## ALL FAIRWAY MOWERS 'READY TO GO'!



2010/2011 RM5610's  
w/1700 hrs -  
\$15,000



2011 Carryall Turf 1's  
\$4,500



2011 SandPro 3040's  
Repowered  
New Engine \$9,000



2011 Toro 360 All  
Wheel Drive & Steering  
w/90 hrs \$15,500



2012 Multi Pro 1250's  
w/1600 hrs -  
\$15,500

## ALL WALKERS \$1500-\$4500 CALL!



2011/2012 Toro 3150Q's  
w/less than 1500 hrs  
\$14,500



2010/2012 Salsco  
Rollers  
\$6,500



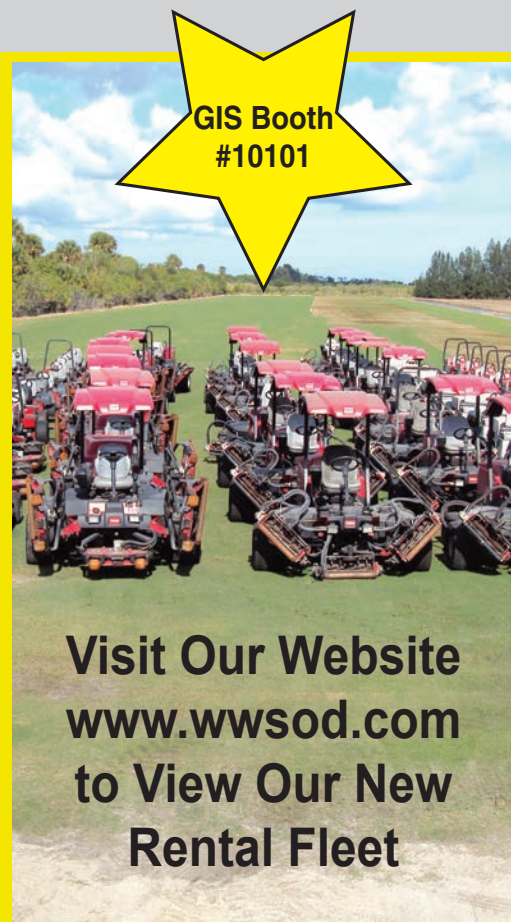
2011/2012 Toro 5510's  
w/ 1400-1800 hrs  
\$12,500-\$17,500



2010 Toro 6500D 4 W/D  
w/ 1765 hrs-  
\$12,500



2011 Toro 5410's  
w/1500-1900 hrs -  
\$12,500-\$17,500



Visit Our Website  
[www.wwsod.com](http://www.wwsod.com)  
to View Our New  
Rental Fleet



## New for 2018

- No Electricity Required!
- Multiple Sizes Available
- 5 Year Pump & Motor Warranty
- Easy Installation
- State of the Art Technology
- Solar Bottom Diffused Aeration Also Available



## Solar Powered Fountains

[www.outdoorwatersolutions.com](http://www.outdoorwatersolutions.com)



See you at GIS - Booth 35083



Roughs have never  
looked so good!



## The Pro-Flex 120B Contour Finishing Mower

Requiring about half the horsepower of self-contained rough mower, the 5 decks follow contours and provide a 10' wide cut. No daily maintenance and the ability to easily set cut height independently on each deck makes the Pro-Flex 120B the choice of leading Superintendents nationwide.

W. SOUTH CAROLINA / N. ALABAMA / N. GEORGIA  
W. NORTH CAROLINA / E. TENNESSEE

### GREENVILLE TURF & TRACTOR

Piedmont / 4 locations

866-485-8873

www.greenvilleturf.com

ILLINOIS / INDIANA

### BURRIS EQUIPMENT

Waukegan, IL

847-336-1205

www.burrisequipment.com

SOUTH WEST FLORIDA / HILTON HEAD

### EVERGLADES EQUIPMENT GROUP

888-746-8873

www.evergladesequipmentgroup.com

Contact Progressive Turf for  
More Dealer Locations.



(800)668-8873 • (519)527-1080 • www.progressiveturfequip.com • info@progressiveturfequip.com

## GOODBYE PORTA-JOHN!

Golfers prefer courses with clean and accessible bathrooms. Green Flush restrooms provide the comforts of flush toilets and sinks without the need for expensive connections to sewer, water, or electrical utilities. Increase your customer satisfaction and keep your green clean with Green Flush Technologies.



Contact us today at: 360.718.7595  
or [greenflushrestrooms.com](http://greenflushrestrooms.com)



GIS SAN ANTONIO 10064 • PGA ORLANDO 2430

404-944-9988 INFO@GOLFSIGNCO.COM

Cast Metal Sign Pricing? **Unbeatable!!!**



CAST BRONZE & ALUMINUM CLASSIC SIGNS AND MARKERS



Santa Barbara Plantation  
Curacao

3D Marketing Guides  
Professional Photography  
Classic Long Lasting Signs  
4K Flyovers with voice & music  
Package Pricing is Amazingly Low!

**NUMBER ONE IN THE WORLD FOR 3D GRAPHICS!**

Great Products, Service & Affordable Pricing!





**WE ARE THE LEADER IN EQUIPMENT AND  
FOR THE GOLF AND TURF INDUSTRY**

**800.596.8873 | WWW.CUTTERONLINE.COM**

## Greens Mowers



**2014 JACOBSEN ECLIPSE 322**  
Very Nice Units! 2 Available!  
**Priced at \$14,900**



**2012 TORO GR3300**  
TRIFLEX - 1771 hours!  
**Priced at \$17,900**



**2013 TORO GR3150**  
930 hours - Very Clean!  
**Priced at \$17,250**



**2013 TORO GR3320**  
TRIFLEX 14-blade reels!  
**Priced at \$17,900**



**2012 TORO GR3150Q**  
8 available! Very Nice!  
**Prices start at \$13,900**



**TORO GR310**  
DPA 11-Blade Reels!  
**Priced at \$4,900**



**2014 JACOBSEN GK-IV+**  
Low Hours! 6 Available!  
**Prices start at \$12,900**



**2009 JACOBSEN GK-IV+**  
1650 hours - CLEAN!  
**Priced at \$10,900**



**2010 JOHN DEERE 2500E** Gas - QA5 Reels!  
- Clean! **Priced at \$9,900**



**2012 TORO FLEX 2100 WALK**  
4 available!  
**Priced at \$2,895**



**2006 JOHN DEERE WALKERS** 4 available!  
**Priced at \$1,500**

## Sprayers Rollers & Rakes



**2011 TORO MP5800D SPRAYER**  
Diesel! 300 Gallon! 2500 hours!  
**Priced at \$25,850**



**CUSHMAN SPRAYER**  
300 Gallon - Diesel!  
**Priced at \$9,995**



**2012 TORO MP1250 SPRAYER**  
1274 hours! 175 Gallon!  
**Priced at \$18,900**



**TRU-TURF ROLLER**  
52" with Honda Engine!  
**Priced at \$7,900**



**2012 TORO SP3040 BUNKER RAKE** Front Blade - Rear Rakes!  
**Priced at \$9,900**



**2011 TORO MP1250**  
Foamer! 175 Gallon!  
**Priced at \$14,900**



**SMITHCO G STAR RAKE**  
Rake, Blade, Cultivator!  
**Priced at \$4,900**



**2011 TORO 5040 RAKE**  
Rakes - Power Blade!  
**Priced at \$11,900**



**SALSCO GREENS ROLLER**  
Includes trailer!  
**Priced at \$4,900**

## Vehicles



**2010 CUSHMAN TRUCKSTER**  
1400 hours! ROPS  
**Priced at \$12,900**



**2013 TORO WORKMAN HD**  
Air-Cooled, 2600 hours!  
**Priced At \$11,900**



**2009 TORO WORKMAN HDX**  
2095 hours! - L/Q Cooled!  
**Priced at \$13,900**



**2014 CLUB CAR 252**  
Low Hours!  
**Priced at \$5,495**



**2014 CLUB CAR 550**  
Electric! New Style!  
**Priced at \$5,995**



**2013 CLUB CAR T**  
Several Available!  
**Priced at \$5,495**



**2013 TORO WORKMAN HDX-D**  
4WD! 1160 hours!  
**Priced at \$17,900**



**2011 CLUB CAR TURF II**  
Mid Duty! 2 available!  
**Priced at \$4,595**



**2014 TORO WORKMAN MD**  
955 hours - 2 Avail!..  
**Priced at \$5,995**



**2014 TORO WORKMAN HDX-AUTO** 1350 HOURS - GAS!  
**Priced at \$14,900**



**DEERE PROGATOR**  
2275 hours! Diesel!  
**Priced at \$12,900**

**WE OFFER A WIDE RANGE OF VEHICLES AND**

**GREENS MOWERS • ROTARY & TRIM MOWERS • SPRAYERS ROLLERS & RAKES • FAIRWAY MOWERS**

**1-800-596-8873**

Fax: (330)455-8875 • sales@cutteronline.com • 3710 Progress Street, Canton, OH 44705

More than  
2 Acres of  
Indoor  
Storage

**CUTTER SHIPS GLOBALLY**





**PARTS**  
**RY**  
**DM**

**NO PAY 'TIL**  
**MAY**  
**2018**  
FOR QUALIFIED APPLICANTS



## Rotary & Trim Mowers



**2006 Toro GM4500D**  
Runs Great – New Style Decks!  
**Priced at \$12,900**



**2012 TORO GM4500D**  
3100 hours! NICE!  
**Priced at \$27,900**



**2013 TORO GM4700-D**  
1784 hours!  
**Priced at \$39,900**



**TORO GM3500D, SW's**  
7 Available! Call for Details!  
**Prices start at \$9,900**



**JOHN DEERE 2653A**  
968 hours! Diesel  
**Priced at \$5,995**



**2013 TORO GM4300D**  
CLEAN! 2530 hours!  
**Priced at \$19,900**



**JOHN DEERE 2653B**  
650 hours! 84" Cut!  
**Priced at \$9,900**



**TORO RM3100D SW's**  
4 in Stock! Call Now!  
**Prices start at \$9,900**



**STEINER REEL ATTACHMENT**  
Fits Steiner and Ventrac!  
**Priced at \$2,500**

## Airway Mowers



**2012 JOHN DEERE 7700**  
1200 hours!! 2 Units!  
**Priced at \$16,900**



**JOHN DEERE 8000E**  
Several in Stock!  
**CALL FOR GREAT DEAL!**



**2012 TORO RM5510**  
1225 hours – 4WD Avail  
**Priced at \$22,900**



**2011 JOHN DEERE 8700**  
1650 hours – Large heads!  
**Priced at \$18,900**



**2006 JACOBSEN LF3400**  
4wd – 2450 hours!  
**Priced at \$10,900**



**2014 TORO RM5410-D**  
1460 hours! NICE!  
**Priced at \$22,900**



**2007 JACOBSEN LF 3400**  
4wd! 1925 hours!  
**Priced at \$10,900**



**2013 TORO RM5510 GAS**  
137 hours! CrossTrax & Groomers!  
**Priced at \$32,900**



**2012 JACOBSEN LF570**  
1280 hours! CLEAN!  
**Priced at \$19,900**



**2014 TORO RM5610**  
Very Clean - 2165 hours!  
**Priced at \$22,900**



**2007 TORO RM5410-D**  
2231 hours!  
**Priced at \$14,900**

## Other Equipment



**TORO PP200 TOP-DRESSER**  
Spinners! Wired!  
**Priced at \$8,900**



**KUBOTA M5700 TRACTOR**  
2200 hours! Turf Tires!  
**Priced at \$13,900**



**SISIS VERTICUTTER**  
Several extra Blades  
**Priced at \$1,995**



**2008 TORO PROSWEEP 5200**  
Nice machine!  
**Priced at \$7,900**



**JOHN DEERE TC125**  
Very Good Condition!  
**Priced at \$5,900**



**2002 TORO BLOWER 400**  
Great shape!  
**Priced at \$2,500**



**TORO GREENS AERATOR**  
Vanguard Engine!  
**Priced at \$3,900**



**2014 TORO PROFORCE**  
Blower Wireless – 900 hours!  
**Priced at \$5,995**



**TYCROP PP180 TOP-DRESSER**  
Twin Spinners – Honda Engine!  
**Priced at \$6,900**

**ND EQUIPMENT**  
• VEHICLES • OTHER EQUIPMENT



**CHECK OUT OUR PARTS pg. 51**

**www.cutteronline.com**





Z2R Flex Roller

GS04 Verticutter

SW04 Swing-Wing Verticutter

Contour Sand Injection

Graden invites you to stop by booth #32113 at the Golf Industry Show to see our innovative products. We look forward to seeing you in San Antonio.

Please visit our website at [www.gradenusa.com](http://www.gradenusa.com).

GRADEN USA INC  
7309 Capehart Road  
Richmond, VA 23294  
ph: 804 249 9950  
fx: 804 249 9951

## Part 2: Pioneers of the Golf Industry - Francis Ouimet

by Jeff Shelley

Editor's Note: This is a second in a series of articles about the people who helped pioneer, promulgate and popularize the game of golf.

Francis Ouimet likely goes down as one of history's most unlikely pioneers in any field, particularly one in a sport that, before he came along, was the domain of the wealthy. Born in 1893 in Brookline, Mass., Ouimet was the working-class product of a French-Canadian father, Arthur Ouimet, and an Irish mother, Mary Ellen Burke. (Arthur's first wife, Mary Mahoney, died during childbirth; their son, Joseph, passed 10 weeks later.)

Arthur and Mary bore four children over an eight-year period; Francis was their second. As the brood grew up in their two-story house directly across from The Country Club in Brookline, Arthur made sure his offspring contributed to the family coffers. So eldest son Wilfred went to work as a caddie at the golf course on the opposite side of Clyde Street.

From his bedroom window, Francis had a birds-eye view of The Country Club's 17th fairway. The youngster was immediately smitten by the scene. His mother would often find 4-year-old Francis standing across the road, staring at the



golfers passing by. He found the game mesmerizing.

As Mark Frost noted in his wonderful 2002 book, *The Greatest Game Ever Played: Harry Vardon, Francis Ouimet, and the Birth of Modern Golf*: "His family's earliest recollections of the boy would be right at home in a nineteenth-century tall tale, befitting the kind of legends told about

Mike Fink or Paul Bunyan; he walked around the house crying for his brother Wilfred's first golf club."

Thus set sail the realization of a quintessential American dream: A caddie qualifies for the final match of the 1913 U.S. Open and then beats the finest players of his generation. Not only that, but Ouimet's victory transformed golf from what had heretofore been an exclusive, somewhat obscure diversion for rich men into a game for the masses.

The Ouimet boys were so taken with golf that they fashioned three makeshift holes in their backyard. Sunken tomato cans were the cups. At 11, Francis joined Wilfred as a caddie at The Country Club. It wasn't long before Francis began excelling in caddie competitions, using his brother's clubs and balls he found during loops. He soon transferred those skills to bigger stages, becoming the best prep player in Massachusetts.

When he was a junior, Francis's taskmaster father insisted that he drop out of high school and do "something useful." So Francis went to work as a salesclerk at the Wright & Ditson sporting goods store, which was co-owned by future Baseball Hall of Famer, George Wright.





*Francis Ouimet putting on Seventh Green, National Open Championship, the Country Club, Brookline,*

Wright imported and sold golf clubs, eventually developing his own line of equipment, and helped introduce golf to Massachusetts' public players with a rudimentary course at Franklin Park. He later donated 156 acres for the construction of Boston's second municipal course (a Donald Ross design named George Wright Golf Course).

Wright was made aware of his employee's prowess on the links, and as an elite athlete, recognized the pitfalls and potential disappointment lurking for a teenager approaching adulthood. So after Ouimet made it to the finals of the Massachusetts State Amateur - and lost, Wright sat his young protégé down for a heart-to-heart chat that led Francis to formulate a tournament strategy for 1913.

Interestingly, Ouimet experienced an "aha" moment at this time after attending a Verdi opera with his mother. He was amazed at the rapturous performance given by a young female soprano, who invested herself so completely to an aria that she seemed to fall into a trance.

After seeing this heightened level of commitment, Francis said to himself: "That is just what I want from golf."

Now fully dedicated, Ouimet began to shine, winning the 1913 Massachusetts Am at Wollaston Golf Club by a resounding 10-and-9 margin over Frank Hoyt. After losing in the quarterfinals of the 2013 U.S. Amateur at Garden City Golf Club on Long Island, Ouimet was asked



*Continued on page 29*

# WANTED

## YOUR USED GOLF AND TURF EQUIPMENT

**WE PAY CASH!**

**GIVE US A CALL  
FAIR AND COMPETITIVE PRICING  
PREMIUMS PAID FOR ALL GOLF CARTS  
AND ROTARY MOWERS**

- ONE PIECE OR ENTIRE FLEET
- MOST MAKES • MOST MODELS
- WE ALSO ACCEPT TRADES

**CHECK OUT OUR INVENTORY AT  
[WWW.UGATESTORE.COM](http://WWW.UGATESTORE.COM)**



**Toro 4500's in stock  
\$4,900-\$14,900**



**CALL US TODAY  
(716) 474-1911  
UGATESTORE.COM  
SALES@UGATESTORE.COM  
AKRON, NY**

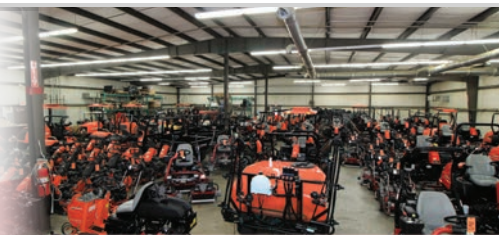




**TURF, LAWN  
& LANDSCAPE  
equipment**

USTurfEquipment.com - 980-354-7122

**"We offer high quality, pre-owned turf equipment for golf courses; and all other outdoor sporting venues."**



SEE HUNDREDS MORE ONLINE AT  
[www.usturfequipment.com](http://www.usturfequipment.com)

**END OF YEAR CLOSE OUT!!!**

**+15**  
MORE PRE-OWNED  
**TRACTORS**  
[www.usturfequipment.com](http://www.usturfequipment.com)



2013 JACOBSEN ECLIPSE 322  
1,253 Hours  
**\$12,250**



2011 JACOBSEN LF 1880  
with 4WD 1,344 Hours  
**\$8,995**



2013 JACOBSEN LF 1880  
Only 733 Hours!  
**\$10,025**



2011 JACOBSEN ECLIPSE 1  
665 Hours  
**\$950 ea. 6 Available!**



2014 JACOBSEN GP400  
1,505 Hours  
**\$10,400**

**+30**  
MORE PRE-OWNED  
**FAIRWAY MOWERS**  
[www.usturfequipment.com](http://www.usturfequipment.com)



2011 TORO GREENSMaster  
3300 TRI-FLEX 2,306 Hours  
With Lights! **\$9,995**



2015 JACOBSEN GP400  
939 Hours  
**\$13,000**



2014 JACOBSEN AR3  
Only 264 Hours  
**\$16,995**



2015 JACOBSEN GROOMS  
MASTER II 992 Hours  
**\$10,400**



2015 JACOBSEN  
GROOMS MASTER II  
1,436 Hours **\$10,400**

**+15**  
MORE PRE-OWNED  
**Tri-plex  
Greens Mowers**  
[www.usturfequipment.com](http://www.usturfequipment.com)



2012 CUSHMAN 1200 HAULER  
Hot Deal!  
**\$3,495 - 9 Available!**



2014 JACOBSEN LF550  
1,366 Hours  
**\$17,500**



2014 MAHINDRA 1533H  
133 Hours  
**\$21,780**



2014 MAHINDRA MAX 26XLH  
88.3 Hours  
**\$12,650**



VERTI-DRAIN 7117  
**\$7,800**

Daniel Smith, Managing Partner  
(704) 956-5472  
Dino DeAngelis - Managing Partner  
(214) 707-7127

**980-354-7122**

Visit Us 9540 Mission Church Rd. Locust, NC 28097

**Still Under Factory Warranty  
MAHINDRA TRACTORS  
Prices Slashed to All Time Low!**

## Pioneers of the Golf Industry - Francis Ouimet

Continued from page 27



by the president of USGA, Robert Watson, if he wanted to play in the 1913 U.S. Open, which had been postponed from its usual June date to mid-September to accommodate two of golf's most famous players, Britons Harry Vardon and Ted Ray.

The U.S. Open that year was being played at a course the 20-year-old Ouimet knew quite well, The Country Club, so he accepted the offer.

For the Open, Ouimet hired pint-sized, 10-year-old Eddie Lowery as his caddy. Francis knew Eddie and his brother Jack from his home course of Woodland. Jack, two years older than Eddie, was Francis's first choice to work the Open. But Jack got into trouble with his mother, and Eddie, disobeying her instructions, showed up at The Country Club to take the bag for Tuesday qualifying.

Vardon and Ray were definitely the headliners at the U.S. Open, and rightly so. Vardon was simply the best golfer of his generation, and one **30 - GolfCourseTrades** February 2018



of the finest ever. The Jersey native won an all-time-best six Open Championships. He was part of the "Great Triumvirate" of five-time Claret Jug winners James Braid and J.H. Taylor, which dominated golf from the mid-1890s to the mid-1910s.

Ray was no slouch either. Also a Jersey native, the stocky Ray was a powerful player known for his recovery skills. He won the 1912 Open

Championship, and later captured the 1920 U.S. Open.

As the 1913 U.S. Open got underway, the galleries surged thanks to widespread newspaper coverage of rising amateur Ouimet competing on the same golf course as the renowned professionals, Vardon and Ray.

Ouimet made it through qualifying, and then in



# GREENMAN

## GOLF & TURF SOLUTIONS

### BETTER HOVER MOWER. BETTER PRICE.

Save 30% - 60% off competitor's prices with Greenman's premium-grade hover mowers. Now you've got a better option.



- Large impeller for better hovering
- Steel handle mounting brackets for better durability
- Stainless steel tri-cutter blades for a better cut and mulch
- Lightest-in-class Briggs & Stratton model weighs in at only 36 lbs

GREENMAN GOLF & TURF SOLUTIONS TEL: (253) 333-3345 WEB: GREENMANGOLFTURF.COM

### Spray 2 Times in Only 1 Pass!



*"I spray everything through those dual fans these days. Weekly foliar apps on greens, herbicide, insecticide, nematode treatments. You name it, we probably sprayed it. I have reduced my Primo applications due to the fact that I am getting much improved coverage on the plant."*

Chris Senior, Countryside Country Club  
Clearwater, Florida



**Get better coverage with less drift.  
Get Greenleaf's Asymmetric DualFan nozzles.**

**www.GreenleafGolf.com • 1.800.881.4832**



the 72-hole championship - with 36 holes played both Thursday and Friday, ended up tied atop the leaderboard with Vardon and Ray at 12-over-par 304. The trio would decide the title in an 18-hole playoff on Saturday.

Throughout the tournament Eddie Lowery provided confidence boosts to Ouimet, who'd never competed at such a high level. "Francis, you just got to beat these fellas," Eddie told Francis, as quoted from Frost's book. "You know you're the last American left . . . We should just walk up to those other fellas and ask 'em when their boat sails for England. They might as well begin to pack."

"Whatever happens today, Eddie, win or lose," Francis replied, "when it's all said and done, I give you my solemn word the one thing they will not be able to say is that my tying them for this championship was a fluke."

Thus emboldened, Ouimet went out and fired a 1-under 72 - with a birdie on his beloved 17th hole, while Vardon finished second after carding a 77 and Ray a 78. Ouimet is one of just eight amateurs to win the U.S. Open.

The victory at The Country Club was met with roaring approval by the thousands of partisans in attendance who had witnessed one of the biggest upsets in sports history, a distinction that's observed over a century later.

Both Vardon and Ray were classy in defeat. "I have no hesitation in saying that [Ouimet] played better golf the whole four days than any of us. His was the best golf I have ever seen in my time in America. It has been an honor to play with him and no dishonor to lose to him."

Ouimet's victory sent shockwaves around the globe and, most importantly, inside the world of golf, especially in his home country. A sport perceived as only for the elite suddenly became accessible to anyone. Ouimet's 1913 Open victory is generally regarded as the catalyst for the tremendous surge in the game's popularity across the U.S. over the next 17 years.

At the time of his win, there were an estimated 350,000 American golfers. Ten years later, that number had risen to 2 million, fueling the notion that Ouimet was the "Father of American Golf."

It also launched the "Golden Age" of American golf architecture. The number of courses in the United States grew from fewer than 750 to nearly 6,000 by 1930. And the quality of the layouts vastly improved, as seminal architects such as Charles Blair Macdonald (often called the father of American golf architecture), Alister MacKenzie, H.S. Colt, Seth Raynor, George C. Thomas, Willie Watson and Ross crafted some of their finest work at dozens of private and, most importantly to the game's growth, public courses.

The 1913 U.S. Open was among the 17 significant career titles Ouimet won, including two U.S. Amateurs. Ouimet remained an amateur throughout his playing days, and his devotion to the game stayed keen. He became the first American to be named Captain of the Royal & Ancient Golf Club of St. Andrews in 1951, and two years later was the first-ever winner of the USGA's Bob Jones Award. He has a room named after him in the USGA Museum in Far Hills, N.J.

In 1949, the Francis Ouimet Scholarship Fund was established in his honor. To this day, Ouimet Scholars are selected among young people who work as caddies at clubs throughout Massachusetts. It's now the second-largest such fund (after the Evans Scholarship). Since its inception, over 5,100 students have received more than \$26 million in college-tuition assistance.

Ouimet also sustained a lifelong fascination for The Country Club, which hosted the U.S. Open in 1963 on the 50th anniversary of his historic win.

In 1932, Ouimet had this observation about the golf course across Clyde Street from his childhood home: "To me, the ground here is hallowed. The grass grows greener, the trees bloom better; there is even warmth to the rocks. Somehow or other the sun seems to shine brighter on The Country Club than any other place that I have ever known."

Ouimet died in Newton, Mass., in 1967 at age 74.



Jeff Shelley has written and published nine books as well as numerous articles for print and online media over the past 30 years. The Seattle resident is the co-founder of the Northwest Golf Media Association and board president of First Green, an international, nonprofit program that provides environmental and STEM education outreach using golf courses as environmental learning labs. [jeff@fairgreenspublishing.com](mailto:jeff@fairgreenspublishing.com)

**GOLFCOURSETRADES.COM - 31**





# Country Club

Landscaping and  
Equipment Repair

# “VOLUME discounts and World wide shipping available”

Buy quality used equipment NOW!!!

Off: 440-235-2157 Cell: 440-829-1992

## www.usedturfequipment.com



**2013 Toro 3150Q**  
Greensmower new reels  
1300 hrs **\$14500**



**2011 Jacobsen GKIV Plus**  
**\$11500**



**2010 John Deere 310Sj**  
Backhoe 4 wheel drive  
Pilot controls **\$45000**



**2011 Toro 5040**  
new engine choice of  
attachments **\$7995**



**2013 Toro 3150Q**  
Greensmower 1000 hrs  
**\$14500**



**2013 Jacobsen LF 550**  
Fairway Mower 662 hrs  
**\$21750**



**2008 John Deere 7500**  
**\$6500**



**2010/2012 John Deere**  
2500B Greensmowers  
Starting at **\$8500**



**2013 Toro 3500D**  
Sidewinder  
**\$18750**



**2011 Cushman truckster**  
1767 hrs  
**\$12750**



**Toro 5200 Prosweep New**  
Wiring and Brush  
**\$4500**



**2010 Toro 3320 T**  
mowers and verticuts  
**\$13700**



**2013 John Deere 220SL**  
wgm mowers  
**\$2650**



**2012 Toro HDXD 4**  
wheel drive w/sprayer  
900 hrs mint **\$22000**



**2013 Jacobsen AR522**  
1199 hrs  
**\$21500**



**2012 Toro MDX**  
Electric Dumps  
**\$4850**



**2012 Jacobsen AR 522**  
5 Deck Rotary  
**\$18500**



**2011 Toro 5510**  
4/WD 1100 hrs  
**\$23500**



**2012/2013 John Deere**  
1600 starting at **\$18700**



**Finn T120 Hydroseeder**  
recent service low hrs  
**\$25000**



**2007 John Deere diesel**  
4/WD Gator  
**\$7500**



**2014 Jacobsen GKIV**  
Plus 400 hrs NICE !  
**\$15750**



**2008 John Deere**  
Aercore 800  
**\$7500**



**2011 Toro 5800 Diesel**  
New Procontrol  
**\$15500**



**2007 Dakota 440 Topdresser**  
new side belt **\$18550/2010**  
Dakota 440 mint **\$22500**



**2002 Toro 1250**  
With Hose Reel  
**\$6500**



**2011 John Deere Diesel**  
progator 3 available  
**\$11500**



**2009 Toro 4500 D**  
Rotary Mower  
**\$17750**



**2012 Jacobsen 322 Diesel**  
Greensmowers/Vertcuts  
**\$12750**



**2012 Jacobsen R311T**  
11 ft Rotary 2 available  
from **\$24550**



**2011 Toro 5610**  
Fairway Mower  
**\$15500**



**AZTEC trencher, plow,**  
vibe, boring ,backhoe  
**\$18500**



**2013 Club Car Turf 1**  
Carryalls 5 avail  
**\$4250**



**2015 John Deere 304K**  
100 hrs with 1 1/4 bucket  
worst dealer in world **\$75000**



**2013 Toro 4500D**  
SWEET  
**\$27500**



**2011 Toro 5510**  
Fairway Mower  
**\$15500**



**Topsoil screener**  
low hrs diesel  
**\$24500**



**2005 Ford F650 mint**  
16000 miles  
**\$38500**



**2011 Smithco Extreme**  
Sand Rake  
**\$8000**



**7 Gang Hydraulic Frame**  
Drag Mower  
**\$2500**



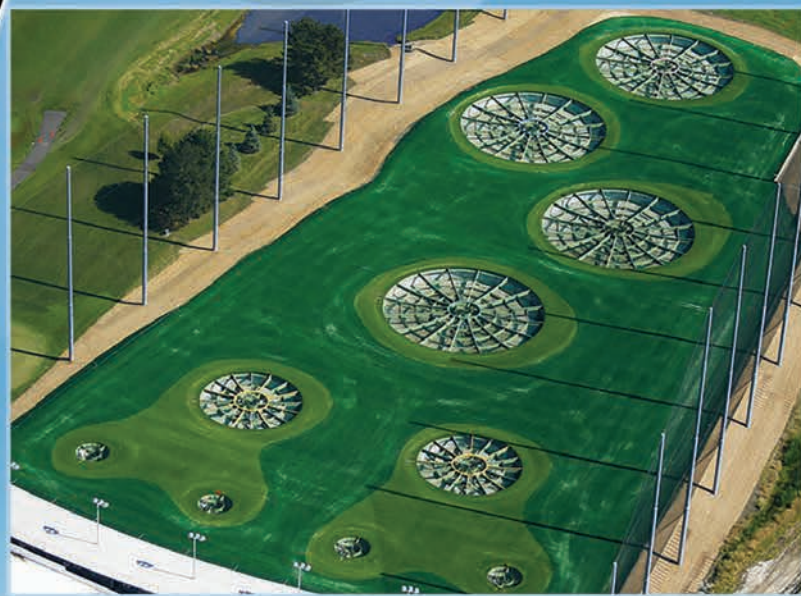
**2016 Sweep -N-Fill**  
DEMO  
**\$4500**



**Deweze Slope Mower**  
Clean  
**\$10500**



# GOLF RANGE *Netting*



We design, engineer &  
install in all 50 states,  
US Territories & Canada.



**GolfRangeNetting.com**  
**866.938.4448**

**STATE OF THE ART  
NETTING & LIGHTING SYSTEMS**

**For Golf Courses, Driving Ranges & Sports Fields**



# DELIVERING SOLUTIONS

We deliver golf course management solutions in **MORE** ways than one.

LOOK FOR US AT BOOTH #19062 AT



golf industry show



Learn How Our Certified and Experienced Staff can Partner with You!



## MORE LOCATIONS

Now with over 40 Locations — a National presence providing same-day or next-day delivery in most regions.

## MORE SUPPORT

Providing enhanced industry experience, expertise and solutions.

## MORE PRODUCTS

An even more comprehensive line of quality, effective products and solutions.

## MORE TRAINING

Training and education by industry experts, with opportunity to earn CEU credits.

## MORE PURCHASING OPTIONS

By phone, in person or using our simple and convenient online store.

GOLF | LANDSCAPE | EQUIPMENT

# AgSource: Your Turf Testing Partner for 60 years

As technology continues to advance, today's golf course superintendent is busier than ever before. AgSource is here to help. For 60 years, AgSource Laboratories has been committed to supporting the turf industry with professional, independent laboratory analysis.



Steve Frack

"We focus on results, helping drive improvement by transforming meaningful data into solutions," says Steve Frack, Vice President, Laboratory Operations for AgSource Laboratories. "You can trust the numbers, which means you can be confident in the fertilizer

applications and soil amendments you're implementing to better turf quality."

With clients in all 50 states and over 20 countries, AgSource has delivered results for countless courses. Samples travel from countries as far away as Malaysia and Indonesia, or as close as Iowa and Nebraska. And not all samples tested are traditional soil samples.

"The most unique sample we've ever tested was a ground up coral," recalls Frack, "It was used to mix with the soil and was a brilliant metallic green color."



AgSource Staff

Over the years, other samples have come from famous baseball stadiums, including Angel Stadium, in Anaheim, California, and 1600 Pennsylvania Ave. - The White House in Washington D.C.

## First in Turf

AgSource Laboratories has a rich history in turf testing. The Lincoln lab was one of the first accredited soil testing labs in the country and an industry leader in digital reporting. Frack joined the laboratory staff in 1981. At that time, the lab was called Harris Laboratories.

"Lew Harris was a great guy. We enjoyed working with him and being a part of the company that bore his name," notes Frack.

In 1996, Harris Laboratories was purchased by MDS Inc., a Canadian health and life sciences company. Ten years later, the agronomy and turf testing business was sold to AgSource. AgSource Laboratories remains dedicated to delivering quality, timely analysis and valuable reports to help improve clients' turf management.

## Dedicated Staff

Today, the AgSource Laboratories team includes a full-time laboratory staff, a dedicated turf agronomist, customer service staff and a crew that receives and processes samples. The entire team is truly 'all-in' when it comes to ensuring accurate results. During the busy fall season, this can mean coming in to grind soil samples at 3 a.m. and staying late to



# Warehouse Sale

**FOR A LIMITED TIME ONLY!**

We've been serving golf courses  
for 40 years! Call Us Today!

Stop by and visit us  
at Booth 3108  
and receive  
a free gift

## Carlisle Links Sport 18x8.50-8 Golf Cart Tire

Looking for the most advanced golf cart tire? Carlisle's newest design, the LinkSport 18x8.50-8, is the tire you're looking for. With a progressive interlocking matrix tread design, the LinkSport reduces the chances of tire marks and lowers the impact to grass surfaces to the minimum threshold.

**\$28<sup>00</sup>** Each

Wheel not included. Assembly pricing available

**CARLISLE'S MOST ADVANCED AND BEST GOLF CART TIRE.**

## CHECK OUT THESE OTHER SPECIAL OFFERS

For a Limited Time Get Huge Deals on These Great Tires.

13x5.00-6 4PR Gladiator Multitrac C/S.....	<b>\$11.00</b>
13x6.5-6 4PR Gladiator Multitrac C/S.....	<b>\$13.00</b>
15x6.00-6 4PR Gladiator Multitrac C/S.....	<b>\$14.00</b>
205/50-10 4PR Achieva Innova Driver.....	<b>\$36.00</b>
20x10.00-8 4PR Deestone T/S.....	<b>\$38.00</b>
18x9.50-8 4PR Achieva Smooth.....	<b>\$49.00</b>
22x9.50-10 4PR Achieva Turftrac R/S.....	<b>\$65.00</b>
23x10.50-12 6PR Trelleborg Heavy Duty R/S...	<b>\$75.00</b>
24x12.00-10 4PR Achieva Turftrac R/S.....	<b>\$75.00</b>



**Free Shipping!**

on orders over \$500<sup>00</sup>

## Call and Order Now!

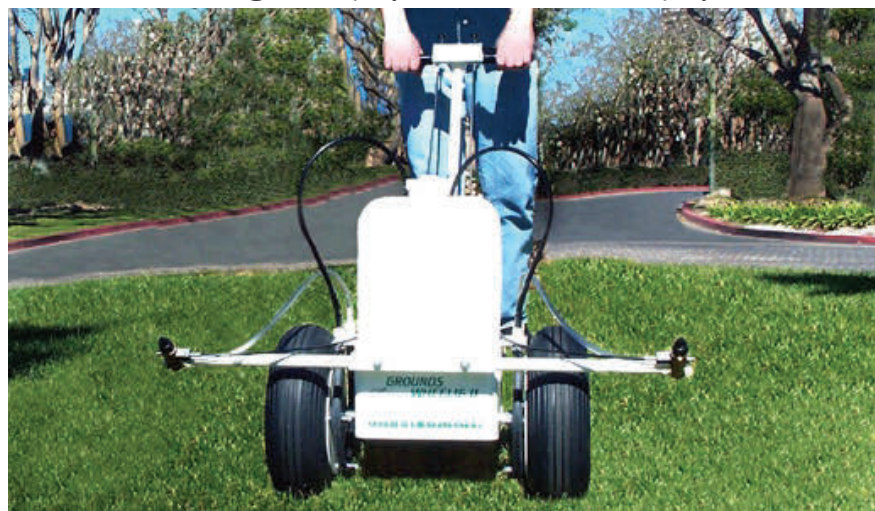
Corporate Headquarters: 1-866-485-0089  
Sales Representative: 1-623-258-8277

The Professionals For All Your  
Turf and Specialty Tire Needs!

## WHEEL SPRAY CORPORATION

Delafield, Wisconsin 53018 - Phone (262) 646-8640

Email: info@wheelspray.com - www.wheelspray.com



## WS-485 Grounds Wheelie - Motorless Liquid Turf Applicator

The WS-485 Grounds Wheelie is the most popular sprayer in the Wheel Spray Line; it features the motorless pumping system that Wheel Spray Corp. is known for.

The WS-485 is used to apply liquid fertilizers, herbicides, fungicides and deicer solutions. The twin wheel pumps spray a fan of solution 6' wide, at the rate of 1000 sq. ft. per gallon. It is equipped with large, easy-to-push pneumatic rubber tires and a heavy gauge steel frame. Extra (6) gallon tanks are available.

The WS-485 delivers chemical applications that are unchanged by the speed at which the sprayer is pushed. The faster it is pushed, the faster it pumps. The spray pattern (72") is delivered from (2) nozzles in the form of small droplets providing a steady, uniform application that greatly reduces costly chemical drifting. The shut-off controls, located on the handle, allow the operator to use the nozzles independently. This is a very popular feature with turf care professionals.

see that every lab test is complete.

"From the moment we get the sample off the FedEx or UPS truck, we take special care," adds Frack. Soil, plant tissue and water analyses is completed and reported in just three working days or less. Results and reports are available online or emailed. AgSource offers easy-to-read reports that build off the pioneering computerized reports from the 1970s, including customization for clients and multi-colored graphing.

"It's great to be able to build on the past reports and keep making them better," said Kevin Klink, Senior Manager, Laboratory Operations for AgSource Laboratories. "We get a lot of positive feedback on our Plant Tissue Summary report, which is nice to hear."



Kevin Klink

The AgSource Plant Tissue Summary report, launched in 2013, helps course managers monitor nutrient uptake throughout the season and depicts nutrient level trends with colorful line graphs. It's a simple side-by-side comparison to track performance from spring to fall.

Additionally, AgSource recently introduced the Soil Health Assessment for turf. Golf course greens get heavy use and are often stressed. Making sure you



have good microbial activity in the soil results in healthier plants. That's where soil health comes in.

"Carbon content and salinity content – those are the big changes in soil testing that allow you to better understand the soil's stability and the potential of meeting plant needs," notes Klink. "It's all about balancing nutrient availability and maintaining soil and plant health."

There are three components of soil health: chemical, biological and physical. Each has an influence on turf management. Chemical components are what traditional soil tests tell you. Adjustments to your fertilizer program are based on this information.

Biological components look at the 'bugs' in the soil. Microorganisms have many functions in the soil, including breaking down grass clippings sooner to avoid the creation of a thatch layer. They also help water and nutrients move throughout the soil and increase water retention.

Physical properties tell you about the actual soil type and structure. For example, soil with more clay

content should be managed differently than a mostly sandy soil. Soil type not only varies across the country, but also throughout your course, from Hole 1 to Hole 18.

## New Logo, Same Great Service

AgSource Laboratories is pleased to introduce a new logo. Officially launched in September, reports, submission forms and other materials now reflect the new look.

"It is an exciting time to be part of AgSource," adds Frack. "This new brand and logo reflect our enthusiasm and focus on connecting our visual identity with who we are today and our vision for the future. Our goal is to help move our customers forward, making improvements based on the data we collect one test at a time."

## See you in San Antonio!

Stop by and meet the AgSource Laboratories staff at booth #9089 during the 2018 Golf Industry Show in San Antonio, Texas, February 7-8. Talk to one of our turf team members, see example reports, pick-up technical bulletins or just ask your agronomy-related turf questions.

Can't make the show? Email the lab or visit us on Facebook at AgSource Turf to see what's going on in the Lincoln lab! For more information, visit [www.agsourcelaboratories.com](http://www.agsourcelaboratories.com), and click on the Turf tab.

AgSource is a leader in agricultural and environmental laboratory testing and information management services. From six locations, AgSource Laboratories provides trusted analysis and measurable results to clients in the United States and across the globe.





## Foley United: Grinder Innovation Continues

A New era of Foley United LLC will be unleashed at the GIS in San Antonio. Foley United's most recent grinder technology has the industry wondering "what's next". It's not about just a new machine, but more about technicians and superintendents having options and a choice when it comes to their reel grinding practices.

While all grinder manufacturers spin grind to a sharp edge, it's Foley United's innovation, automation quality, and elegant simplicity that sets the industry standard when it comes to grinding capabilities. The ability to conduct a quick spin grind when wanted or returning reels back to OEM specifications when needed is what it's all about, which separates Foley United from the competition.

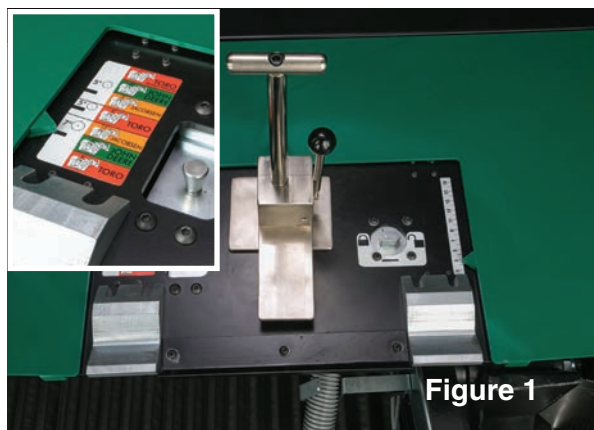


Figure 1

Not only are there new machine advancements from Foley United, but the company is changing. 2017 brought new company ownership and new senior leadership committed to growing the business. This has already made a big impact with investments in "lean" manufacturing, automation, updated facilities, and expanded product lines that will provide the user with expanded performance and options you



653

633

are looking for. Stop by booth 16107 at the GIS and see how Foley United will save you time and money making your shop more productive than ever.

Foley United's launch of the 653 and 633 Reel Grinders set the standard for simplicity and automation. The unique rear roller mounting system (Figure 1) makes set-up on these machines more accurate than ever with simple machine decals guiding the

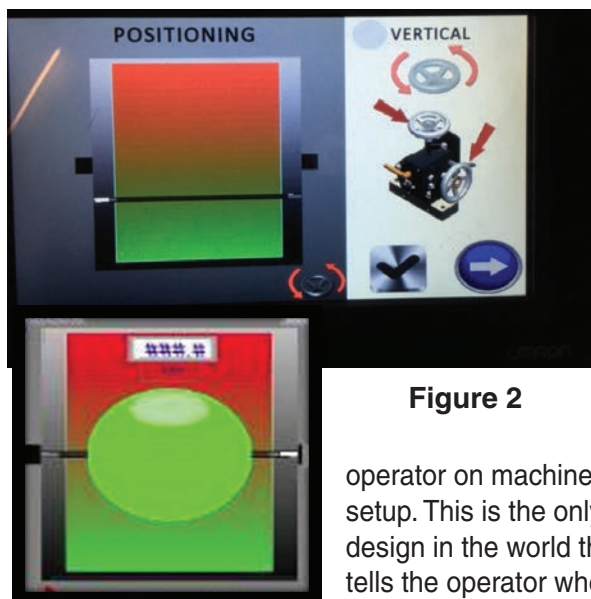


Figure 2

operator on machine setup. This is the only design in the world that tells the operator where to place the rear roller based on reel make and diameter and is part of a pre-positioning system that provides needed clearances for both the spin and relief grind process.

In addition to easy placement, the "rear roller to reel shaft parallel design" of many cutting units makes gauging a "one & done" process for most reels. This is achieved with a visual LED and "bubble-style" graphic system (Figure 2) that allows even the most inexperienced operator the ability to remove taper when spin grinding. In the past, you could twist the bedknife and take rollers out of parallel to compensate for a cone-shaped reel, but with shorter heights of cut, more rigid reel frames, and harder metals, keeping reels true is more important than ever.

Foley United's AccuTouch Control, standard on a 653 and as an option on the 633, takes grinding automation to a new level providing an animated graphic tutorial making setup quick and easy. With turn-over in shops, this is a priceless tool that will walk a new technician step-by-step through the grinding setup helping to achieve the highest quality spin grind possible. For more experienced operators, the tutorial is easily turned off for a quicker "set-up & spin grind" feature. With labor cost rising and the availability of technicians tightening, these types of innovations from Foley United are saving superintendents both time and money. There is merit in owning equipment that can improve productivity with automation, as you tell the machine what you're working on and the machine does the rest.

In addition to automation and easy placement, a counter-balanced spin drive motor (Figure 3) pivots and floats to connect directly to the reel. This is now the easiest connection in the world and requires no tools.

Recently the industry has been trending toward grinders that do more than just spin grind and Foley

United's new generation of tabletop reel grinders address why. The patented auto-index relief system and automation of the in-feeds makes returning reels to spec a "no-labor" proposition and Foley United's relief design makes this option easier than ever.

The "shop tools" you use to take care of the cutting heads isn't complete without a partnering bedknife grinder. Foley United's 672 AccuPro has been the industry workhorse for years and now things are even better with automation. The time needed to sharpen a bedknife with the 673 is second to none. This is the only unit in the world that utilizes electromagnets, pre-sets angles and pre-aligns the bedknife so all the operator has to do is infeed.



Figure 3

Foley United's line-up of grinding equipment is a cut above the rest. The complete line of grinders offers choices to fit your style of maintenance and also your budget without sacrificing the quality and craftsmanship you expect from Foley United. See you at the GIS or visit [www.foleyunited.com](http://www.foleyunited.com) to see how we can best fit your needs.



672



**Cross Country Cowboy Inc.**

**Pioneering Company of Quality Golf Net Installations**

## PROFESSIONAL GOLF NETTING INSTALLATION

SINCE 1990



- Nationwide Turnkey Installations-Designed & Installed
- PATENTED Cross Brace System with cable hung matching Chain Link Skirt

- Aesthetics and Quality work are our Priority
- Engineered Wood & Steel Poles
- NO Subcontractors!

**DEDICATED TO EXCELLENCE**



**Best Warranty**  
Competitive Pricing

Visit us at  
PGA Booth  
#3123

**CALL TODAY**  
For your free quote  
**1-877-NET-S411**  
**(638-7411)**

Cross Country Cowboy, Inc.  
233 13th Street  
Hammonton, NJ 08037

[www.CROSSCOUNTRYCOWBOY.com](http://www.CROSSCOUNTRYCOWBOY.com)

**BIRCHMEIER®**

SMART UND SWISS SEIT 1876

Quality you can trust

**From professionals –  
for professionals**



**Iris 15**  
Backpack sprayer  
for every day use



**SuperStar 1.25**  
Handy compression sprayer  
for smaller applications



**Granomax 5**  
Most versatile granular  
applicator available

**ITB** CO.  
INCORPORATED

ITB Co., Inc. 800-866-1357  
[www.birchmeier.us](http://www.birchmeier.us)



Made in Switzerland

**Make Your Old Sprayer  
Better Than New!**

- GPS nozzle control
- Eliminates boom overlap
- Faster spray speeds
- Chemical Savings
- Installs on any Sprayer
- It's Affordable!



**Get spraying done faster with the**

**Ultimix!**



- Keeps your sprayer out on the turf,  
**SPRAYING!**
- Complete mixing of difficult products
- Minimizes mixing errors
- Safer handling of spray products

Visit us at GIS Booth #15101

**Frost Inc.**

Spray Technology Products

800-621-7910

[info@frostserv.com](mailto:info@frostserv.com) [www.frostserv.com](http://www.frostserv.com)





# U. S. Aqua Vac, Inc.: America's #1 Pond Cleaning Company

There are golf courses throughout the country, and usually where there is a golf course there are lakes and ponds. U.S. Aqua Vac specializes in cleaning lakes and ponds of all types. With U.S. Aqua Vac's methods they will not tear up any landscaping or areas with heavy equipment. You will not have to worry about repairing landscaping or have sloppy muck get all over the place.

With customers in every state (and Puerto Rico), U.S. Aqua Vac's headquarters is located in the Midwest. With offices across the country, including locations in Florida, Pennsylvania, California, South Dakota, Georgia and numerous places in-between. If you are located anywhere within the continental United States, U.S. Aqua Vac has service in your area. With No Freight Fees! U.S. Aqua Vac's focus is exclusively on our customers and insuring their expectations are met.



## Process and Equipment

U.S. Aqua Vac's machines are pond liner and plumbing safe. Instead of digging or draining a waterway, U.S. Aqua Vac uses your water to boost power and speed to remove the sediment. With their muck removal methods you won't have to worry about killing any wildlife.

U.S. Aqua Vac uses high horsepower vacuums & pumps and well-trained personnel with cleaning techniques that restores the lake or pond's



hard bottom. As for the silt that is removed from the lake or pond, it is pumped into a specialized muck bag. The bag is specially designed to let water seep out allowing the water to return to the main waterway. This process leaves only the solids behind. After the soil is dry, many golf courses use the dried dirt on their course. It acts a rich fertilizing soil. It can be used for berms, tee boxes, and even the golf courses landscaping.

Horsepower is absolutely essential to sediment removal. As there are other companies who try to show up using a little lawnmower engine water pump to remove sediment to increase their profits. All this does is stretch out the length of a project, leave sediment that the underpowered pump can't handle, as money keeps going into that companies pocket.

This is why every year around 20% of U.S. Aqua Vac's new customers are upset people who had their pond cleaned recently by another company.

## Why get my pond cleaned?

There are many reasons why to get your lake or pond cleaned! Lakes and ponds start dying and filling themselves in as soon as they are created. Mother nature slowly starts turning a pond into a smelly murky swamp, and then gradually turning a murky swamp into a mosquito infested marsh. Eventually, it becomes solid land with no evidence that a beautiful lake or pond existed.

Sometimes lakes and ponds seem a lot alike on the surface, but underneath the water they are all different. Lakes & ponds have all types of mixes of muck. Some muck can come from weeds decomposing from chemical treatments. Another type can come from all of the ducks and geese sitting in the water. Muck is also created from leaves and branches falling into the water and sitting there over time. With the bacteria, toxic gases, and ammonias, muck and sludge come different colors, thicknesses, and smells.



## U.S. Aqua Vac's Business - is to Help Your Business

With U.S. Aqua Vac's environmental friendly services they continue to win awards for their low priced, effective, non-messy muck, sludge, silt and sediment removal process. U.S. Aqua Vac has happy customers all over the U.S.A. From top ranked golf courses to one man operation golf courses.

With being a top supporter and member of several green environmental foundations, U.S. Aqua Vac continues to make a difference. With your pond cleaning, U.S. Aqua Vac contributes and continues to makes donations to the GCSAA, NGCOA and the Environmental Institute for Golf. They continue to have repeat golf course customers year after year to clean other ponds on their course. They respond quickly and are always ready to present the best price to your course and work with your needs.

To learn more about how U.S. Aqua Vac can help you and your golf course contact them today

866-989-MUCK (6825)  
info@usaquavac  
www.usaquavac.com







**Quality Erosion Control Products**  
**Tired of change? Stick with us!**  
**Made in the U.S.A. 1-888-477-3028**



**Easy**  
**Consistent**  
**Reliable**

**OWN YOUR  
EQUIPMENT LONGER.**



With the latest advances and proprietary additives  
proven to reduce friction and  
maximize durability, you can count on  
Schaeffer's unmatched equipment protection  
to help offset maintenance costs.

[www.schaefferoil.com](http://www.schaefferoil.com)

(800) 325-9962  
Made in the USA

SINCE 1929  
**Schaeffer's**  
SPECIALIZED  
LUBRICANTS

**NEW LOOK**

**NEW FEATURES**

**MOBILE FRIENDLY**

[GolfCourseTrades.com](http://GolfCourseTrades.com)



GIS Booth  
#33089

**Bio-Mega** is *not* just another bio-stimulant, and it's not just another seaweed product. Bio-Mega is not just another humic acid, and it's *not* just another organic fertilizer.

**Bio-Mega** is a *Total Microbial Ecosystem* scientifically designed to dramatically improve the health, vigor, and playability of golf course turf. Bio-Mega delivers billions of beneficial microorganisms in an easy-to-use tank-mixable concentrate with steroidal saponins and other phyto-elicitors.

**No gimmicks, no nonsense. Just GREAT GREENS AND TERRIFIC TEES based on solid soil science.**

From Soil Tech Corp,  
*Teaming with Biology since 1986.*



Made  
with  
Pride  
in Iowa

Call For A Fact-filled Brochure: 1-800-221-7645 ext.105  
[www.soiltechcorp.com](http://www.soiltechcorp.com)



# INDUSTRY CALENDAR

<p>January 15-17: Midwest Green Industry Experience (MGIX) Greater Columbus Convention Center, Columbus, O Contact: <a href="http://www.mgix18.com">www.mgix18.com</a></p> <p>January 15-19: Green &amp; Growin' Show Greensboro, NC Contact: <a href="http://greenandgrowin.com">greenandgrowin.com</a></p> <p>January 16-19: 2018 STMA Conference &amp; Exhibition Fort Worth, TX Contact: <a href="http://www.stma.org/2018-conference">http://www.stma.org/2018-conference</a></p> <p>January 19-20: Northwest Landscape Industry Conference Hotel RL, Olympia, WA Contact: <a href="http://www.walp.org/2018-conference">http://www.walp.org/2018-conference</a></p> <p>January 23-25: 2018 Iowa Turfgrass Conference &amp; Trade Show The Meadows Event Center, Altoona, IA Contact: <a href="http://www.iowaturfgrass.org">www.iowaturfgrass.org</a></p>	<p>January 29-February 1: MidAtlantic Turf Expo Fredricksburg Convention Center, Fredricksburg, VA Contact: <a href="http://www.turfconference.org/">http://www.turfconference.org/</a></p> <p>February 2-8 Golf Industry Show Henry B. Gonzalex Convention Center, San Antonio, TX Contact: <a href="http://www.golfindustryshow.com/">http://www.golfindustryshow.com/</a></p> <p>February 7-9: Wyoming Groundkeepers &amp; Growers Association 2018 Annual Conference &amp; Trade Show Contact: 307.234.7583</p> <p>February 11-14: IECA 2018 Annual Conference &amp; Expo Long Beach, CA Contact: <a href="http://www.ieca.org/ieca">http://www.ieca.org/ieca</a></p> <p>February 12-15: TPI International Education Conference &amp; Field Day</p>	<p>Westin La Paloma Resort, Tucson, AZ Contact: <a href="http://www.TurfGrassSod.org">www.TurfGrassSod.org</a> FIELD DAY HOST: EVERGREEN TURF, INC.</p> <p>February 14-16: Western Canada Turfgrass Conference River Rock Casino Resort, Richmond, BC Canada Contact: <a href="http://wcta-online.com/conference/wcta-show-conference">http://wcta-online.com/conference/wcta-show-conference</a></p> <p>February 20-21: 2018 MGIA Trade Show &amp; Convention Suburban Collection Showplace, Novi, MI Contact: <a href="http://www.landscape.org">www.landscape.org</a></p> <p>February 26 – March 6: The Canadian Golf Course Management Conference Presented in partnership with QGSA, Quebec City, QC Contact: <a href="https://golfsupers.com/en/events/calendar">https://golfsupers.com/en/events/calendar</a></p> <p>February 27-28: 2018 Western Pennsylvania Turfgrass Conference &amp; Trade Show Doubletree by Hilton Hotel,</p>	<p>Pittsburgh - Cranberry, PA Contact: <a href="https://paturf.org/events-calendar/western-pa-turfgrass-conference">https://paturf.org/events-calendar/western-pa-turfgrass-conference</a></p> <p>February 28: 2018 Turfgrass Advocacy – NYSTA's Lobby Day Empire State Plaza, Albany, NY Contact: <a href="http://www.nysta.org">www.nysta.org</a></p> <p><i>Calendar Courtesy of Turfgrass Producers International</i></p>
---	---	---	--

## Golf course architect Kevin Norby has completed a major renovation at flood ravaged Meadowbrook Golf Club.



Meadowbrook Golf Club is located in Hopkins, Minnesota and is one of five courses owned and operated by the Minneapolis Park & Recreation Board. The course was originally designed by William Foulis Jr. and opened in 1924. In June of 2014, the golf course was closed when more than 11 inches of rain caused Minnehaha Creek to overflow its banks and submerged the golf course under up to five feet of water. The damage included 64 acres of dead turf, washed out cart paths and bunkers, nearly 100 drowned trees, damage to four greens and flooded irrigation satellites. Funds from the Federal Emergency Management Agency (FEMA) paid for repairs to the course.

In response, the Park Board hired golf course architect and ASGCA member Kevin Norby to assist them with navigating the FEMA process and reconstructing the golf course. According to Norby, just one year earlier, this process wouldn't have been possible. In September of 2013, FEMA issued a policy change bulletin that provided for federal funding for damaged turf on golf courses. Prior to that change in policy, FEMA would only pay for repair of damage to infrastructure such as public buildings or irrigation components.

Norby added, the first thing that needs to happen in order to be eligible for FEMA assistance is that the governor has to declare a disaster and request funding from the federal government. Once that has happened, our first step was to prepare a cost estimate and a hole by hole assessment of the damage. Norby estimated the damage at Meadowbrook at nearly \$2 million.

The construction process at Meadowbrook was completed in three phases beginning with some minor repairs that were completed in-house by Park Board golf course staff. Next, the fairways and roughs were regressed to allow time for them to mature. Finally, Norby worked with



the Park Board to solicit competitive bids for the reconstruction of bunkers, the repair of cart paths and the replacement of the irrigation system electrical components.

Norby said, we've probably got more experience with FEMA funded golf course reconstruction projects than anybody in the country. Norby





recently completed a \$5.5 million FEMA funded renovation at Coal Creek Golf Course in Colorado. In addition, Jon Schmenk, an associate architect at Herfort Norby, was involved in the reconstruction of Joseph Bartholomew Golf Course in New Orleans after hurricane Katrina. According to Norby, when working with FEMA, it's important that you understand and follow their procurement process. They require multiple bids and advertisement of the work nationwide to minority and women-owned businesses. Norby noted, failing to follow those guidelines can result in denial of funding.

The bunkers were the most involved part of the project, said Norby. The faces had eroded and collapsed and the drain tiles were plugged. Because the course was closed for so long, the bunkers had become overgrown with weeds. Norby said, we rebuilt the faces and restored them to a look and style that is consistent with the golden-age character of the course. Since FEMA would only participate in reconstruction of elements that were damaged

by the flood, the Park Board funded the reconstruction of the remaining undamaged bunkers. We wanted the course to look and play consistently when they reopened. We eliminated a few bunkers and actually reduced the overall square footage by nearly 30 percent.

The reseeded of the course was completed by Hartman Golf while the bunkers and irrigation reconstruction was completed by Duininck Golf – both certified members of the Golf Course Builder's Association of American (GCBA).

# Golf Trades Trades Place





**Staffing Solutions for  
Turf Professionals**

### How it Works

- Tell us your needs.
  - > Recruiting    > Advertising
  - > Interviewing    > Reference Checking
  - > Hiring
- ...We do it all!**
- In an effort to stream line the hiring process, we video interview candidates and send you the top picks.
- In addition to long-term hourly staffing and direct hire, we offer a 30-day replacement guarantee.

[www.TurfLabor.com](http://www.TurfLabor.com)  
**864-979-1209**

## SUNDANCER



*Hottest Buffalograss Under the Sun*

- **Superior Establishment from Seed**
- **50% Less Fertilizer, 50% Less Mowing, Up to 50% Less Watering**
- **Darker Green Color with Extended Green Period**
- **Improved Disease and Insect Resistance**
- **Drought Tolerant, High Quality Turf**

1.800.759.1520  
 prairie@stockseed.com  
 28008 Mill Rd, Murdock, NE  
 www.stockseed.com

*Brought to you by:*





# Golf Trades Trades Place

Soil Health • Plant Tissue • Irrigation Water

Over 50 years of turf testing experience!



**Golf Industry Show  
Booth #9089**

402.476.0300 • lincoln@agsource.com

©2018 All rights reserved. AgSource Cooperative Services A-17024-17

**AgSource**  
LABORATORIES



**CMI**

Remove cattails from your ponds while standing on the shore with "The Yard Blade" garden tool, by CMI.

[WWW.Cuddebackmachining.com/products/yard-blade](http://WWW.Cuddebackmachining.com/products/yard-blade) for videos and to purchase.

**DIVOTS, INC.**  
- Premium Divot Repair Mix -

Keep your golf course green with  
**The Ultimate Divot Repair Mix**

- Black Topdressing Sand
- Green Divot Sand
- Bunker Sand
- Topdressing Sand
- Greens Mix
- Ultra Dwarf Topdressing Sand

919-775-8634 • [www.divotssand.com](http://www.divotssand.com)

**TURFTIME**  
EQUIPMENT

**GIS Booth  
29099**

Great **Turf** in less **Time**  
with the right **Equipment**



[www.TurfTimeEq.com](http://www.TurfTimeEq.com)  
800-201-1031



The Classic dethatcher  
verticutter

**The ULTRA BLADE  
from Turf Pride**

**Turf Pride**



Unique Triple Bend



Conventional Straight Ultra Blade

**Incredible Cut Quality**

Super thin profile - saves on fuel costs!! No more clumping or windrowing!! Special high chrome, nickel and carbon alloy. We offer blades for most all rotary mowers.

COLORADO  
**COLORADO  
GOLF & TURF INC.**  
Littleton, CO  
303-761-3332  
[www.coloradogolfandturf.com](http://www.coloradogolfandturf.com)

GA/AL/TN/FL/AR/MS/LA  
**JERRY PATE TURF  
& IRRIGATION**  
800-700-7001  
[www.jerrypate.com](http://www.jerrypate.com)

TENNESSEE  
**LILES & TIPPIT**  
Collierville, TN  
800-238-4406  
[www.lilesandtippit.com](http://www.lilesandtippit.com)

(800)426-3634 • [sales@turfprideusa.com](mailto:sales@turfprideusa.com) • [www.turfprideusa.com](http://www.turfprideusa.com)

**ARTURF**  
PRODUCTS



**Backpack  
Blower Caddy**

**MADE IN THE  
USA**



**Whip Stick  
Keeper**

- Light Weight Removable Tray
- Constructed of steel and aluminum
- Durable power coat finish
- Easy installation

- Spring latch Assembly
- Steel Construction
- Durable power coat finish
- Easy installation

[www.arturfproducts.com](http://www.arturfproducts.com)  
262.372.3074

**BELL TURF**  
The Best Choice

Custom crafted transporter that extends the life of your greensmower investment. Exclusive clamping system ensures complete protection for your greensmower

[www.bellturf.com](http://www.bellturf.com)

**Call today!  
408-452-7674**



**Mower Mate™**

**BELL TURF**  
The Best Choice

Loads, and secures the John Deere E-Cut Hybrid greens mower without lifting, in one easy step.

View our video at  
[www.bellturf.com](http://www.bellturf.com)

**Call today!  
408-452-7674**



**Mower Mate II™**

**EAGLE GOLF & LANDSCAPE PRODUCTS, INC.**  
SERVING THE GOLF INDUSTRY WORLD WIDE

**GIS Booth #4040**

**Eagle Interface**  
A Root Zone & Moisture Barrier for Greens Construction

**ADS**  
NDS  
Futerra  
Sand dam

**GreenSP**  
Soil Protection Series

**Enka Path**  
**Enka Shoreline**  
**Enka Mat**

**Nyloplast**  
**COLBOND**

**Johns Manville**

[WWW.EAGLEGOLFANDLANDSCAPE.COM](http://WWW.EAGLEGOLFANDLANDSCAPE.COM)  
714-524-8598 800-21-EAGLE FAX 714-524-6195

**J. Davis**  
MARKING, LLC

**Custom Markers  
& Sprinkler Caps**

**ALL MODELS**

- Custom Made to fit your Specs
- NO job TOO Big or TOO Small
- Fastest Turnaround
- Choose from variety of Colors



**Broken Tee Box Markers!**

- 1st Mow-over receptacle!
- Easily installed with a cup cutter
- Easy removal & disposal

**261**

**213  
192  
168**

**134**

**GIS Show  
Booth  
#10066**

**J. Davis Marking Systems  
Alan & Alicia Pitcher**  
[office@jdavismarking.com](mailto:office@jdavismarking.com)

[www.jdavismarking.com](http://www.jdavismarking.com)

**PH. 563-652-0638**

FAX 620-584-2544  
P.O. Box 55, Clearwater, KS 67026



**Time Effective**  
One sprinkler requires less than a minute of maintenance saving manpower and time.

**Adjustable**  
Cleans sprinkler heads ranging from 4.5" to 10" making it the only system you need.

**Precision Balanced**  
Easy to control, patented boot & bearing system.

**Clean Cut**  
Head Edger's design achieves a clean trim of the grass and trenches the soil for a manicured finish.

# THE REVOLUTION

## in Sprinkler Head Cleaning Technology



**Head Edger, Inc.**  
866-897-2737  
www.headedger.com



## Thinking of Removing Cores This Aerification Season?



Only the original "CORE COLLECTOR" from Turf Pride offers:

- Savings on labor costs
- Attaches to walk behind and tractor drawn aerifiers
- Top dressing ahead of aerification
- Available models to fit all major brands of aerifiers

saves even more time, hassle and protects greens from damage

NEW JERSEY  
**DOUBLE D TURF LLC**  
MONROE TWP., NJ  
732-241-7378  
www.doubledturf.com

MO / IA / KS / NE / IL  
**COMMERCIAL TURF & TRACTOR**  
Chillicothe, MO  
800-748-7497  
www.commercialturfandtractor.com

(800)426-3634 • sales@turfprideusa.com • www.turfprideusa.com




# Inject-O-Meter Fertigation Pumps

Our **Fertigation** pumps have proven themselves time and time again on golf courses, sod farms, greenhouses and thousands of crops around the world. There are more expensive systems out there, but if you want a simple, reliable, bullet proof **Fertigation System** that works, call Inject-O-Meter today!

**The Fertigation Leader for 40 Years!**



**GIS Booth #29103**

**1-800-545-4440**  
www.inject-o-meter.com  
rthorn@inject-o-meter.com



GARDENING • LANDSCAPING • TREE FARMING • TERMITE PROTECTION • GROUNDS MAINTENANCE

• MADE IN THE USA •

# Power Planter®

www.powerplanter.com

WHY DIG WHEN YOU CAN DRILL?








**"NEW FOR 2018"**  
"CUP CUTTING CADDY"

Higher quality plastic container for better durability.

Celebrating our 29th consecutive GIS



One handle instead of two for better access to all pockets

Replaces the 5 gallon plastic bucket.

Larger Pockets

**GIS Booth #33085**

www.jett-enterprises.com  
800-588-3138

# Power Rotary Scissor Head

The latest addition to the Seago Attachment Group of products.

**GIS Booth #3097**





- Will fit any brand and model of string trimmer or brush cutter.
- Standard blades is 9.5" in diameter with an optional 11" blade available."

Great for edging and trimming

800-780-9889  
www.seagousa.com



Tri-C Soluble Humate w/35% humic acids... dramatically improves soil for just pennies per gallon! Spray or Fertigation...stays in solution.

**Tri-C Enterprises, LLC**  
800-927-3311 • www.naturalsoilutions.com





# SUPPLIER DIRECTORY

## Accessories



### Flexstake Inc.

Phone: (800) 348-9839

Web: [www.flexstakegolf.com](http://www.flexstakegolf.com)

eMail: [jim@flexstake.com](mailto:jim@flexstake.com)

Flexstake, Inc. is a manufacturer of golf course markers. Products available are flex floating stakes, flex glo stakes, large yardage & OB markers, signs, decals, flexfence, and traffic control devices. Make Flexstake, Inc. your one stop shop for all these products.

- Distance & Range Markers
- Flags & Poles
- Hazard/Out of Bounds Markers
- Markers (fairway)
- Tee Markers & Signs



### Markers Inc.

Phone: (800) 969-5920

Web: [www.markersinc.com](http://www.markersinc.com)

eMail: [dknoepp@markersinc.com](mailto:dknoepp@markersinc.com)

Innovative products designed to SPEED PLAY, IMPROVE GOLF COURSE APPEARANCE and REDUCE LABOR, characterizes Markers Inc.'s Mission for the Golf Industry. Use of leading-edge materials, innovative designs and precise manufacturing enhance MarkSmart products. Priced very competitively and marketed Internationally, Markers products can be found on thousands of Golf courses.

- Adhesives
- Benches
- Distance & Range Markers
- Fencing & Accessories
- Flags & Poles
- Hazard/Out of Bounds Markers
- Markers (fairway)
- Mats
- Practice Range Equipment
- Rope (chain & stakes)
- Tee Markers & Signs
- Tee Towels
- Windscreens

## Carts



### Buffalo Turbine LLC

Phone: (716) 592-2700

Web: [www.buffaloturbine.com](http://www.buffaloturbine.com)

eMail: [paul.syracuse@buffaloturbine.com](mailto:paul.syracuse@buffaloturbine.com)

For over 65 years, Buffalo Turbine has utilized Turbine Style Blowers for Spraying and Debris maintenance. Buffalo Turbine manufactures "High Volume, High Velocity" debris blowers for more applications and in more styles including Trailer or skid mount versions in Gasoline, and Diesel along with hydraulic and PTO powered debris blowers.

- Batteries
- Carts (used)
- Equipment Washers, Water Recycling
- Tools
- Uniforms
- Utility Vehicles Accessories

## Carts



### Cutter Equipment Co.

Phone: (800) 596-8873

Web: [www.cutteronline.com](http://www.cutteronline.com)

eMail: [sales@cutteronline.com](mailto:sales@cutteronline.com)

Cutter Equipment Company provides quality pre-owned turf to the golf course and sports turf industry. Cutter is managed by a Certified Golf Course Superintendent (CGCA) with 24 years of experience. We have deep roots in the turf industry and want to grow with you.

- Clothing
- Engines (new)
- Equipment Lifts
- Utility Vehicles



### Futures Golf Equipment

Phone: (866) 331-6621

eMail: [futuresgolf@wk.net](mailto:futuresgolf@wk.net)

Quality Used Turf & Grounds Maintenance Equipment. WE TAKE CARE OF YOUR NEEDS. If you don't see it listed, give us a call, ...we probably have it!!!! Major Credit Cards Accepted.

- Carts (used)
- Engines (new)
- Equipment Lifts



### Global Turf Equipment

Phone: (866) 588-3092

Web: [www.globalturfequipment.com](http://www.globalturfequipment.com)

eMail: [info@globalturfequipment.com](mailto:info@globalturfequipment.com)

Save your green... Go Global!

- Engines (new)
- Equipment Lifts
- Utility Vehicles



### J W Turf

Phone: (847) 683-4653

Web: <http://www.jwturfinc.com>

eMail: [danna@foxvalley.net](mailto:danna@foxvalley.net)

- Lapping Compounds
- Trailers (dump)
- Utility Vehicles



### Jerry Pate Turf & Irrigation

Phone: (404) 346-5340

Web: [www.jerrypate.com](http://www.jerrypate.com)

eMail: [mrobinson@jerrypate.com](mailto:mrobinson@jerrypate.com)

Jerry Pate Turf & Irrigation, Inc. specializes in offering quality, used mowers, golf cars and turf equipment to the commercial, industrial, golf and residential customers around the world.

- Carts (used)
- Clothing
- Engines (new)

## Carts



### Jesco Products/Pinhigh Compound

Phone: (800) 422-4748

Web: [www.pinhighcompound.com](http://www.pinhighcompound.com)

eMail: [jesco@jescoproducts.com](mailto:jesco@jescoproducts.com)

For over 27 years, Pinhigh has helped golf courses around the world.....KEEP THAT EDGE Well maintained, evenly cut turf is a must on the golf course. To achieve a smooth and uniform cut, reel blades and bed knives must be well matched and have clean, sharp edges. You can count on Pinhigh Reel Sharpening Compound to ensure the consistent results you're after. Pinhigh saves time and helps eliminate waste because it's completely premixed. Pinhigh in non-toxic, water soluble, and available in all popular grit sizes: 50 - 220 grit.

- Lapping Compounds



### MDI Products / MO-DECK

Phone: (413)433-3663

eMail: [mdiproducs@aol.com](mailto:mdiproducs@aol.com)

GOT GRASS? MO-DECK was created by a chemist after years trying to keep wet grass from sticking on his mower deck. He tried everything with little results. MO-DECK polymer spray worked! Clean ups are quicker, mower decks cleaner and no clumps of grass on the greens, fairways or equipment. Snow glides off plows, shovels, blowers and throwers!

Toll Free 1-866-213-0772 & Fax 1-866-323-4832

WWW.MO-DECK.COM

NON-STICK products for TURF and SNOW



### Pomp's Tire Service

Phone: (800) 348-2396

Web: [www.pompstire.com](http://www.pompstire.com)

eMail: [sjones@pompstire.com](mailto:sjones@pompstire.com)

Golf Course Superintendents nationwide have proven that Pomp's Flotation Tires are essential during delicate operations: Top Dressing, Spraying, Mowing, Back Filling Traps, Aerating The large contact area of the flotation tire effectively distributes load over a broad area.

- Tires
- Utility Vehicles Accessories
- Wheels

## Carts

### Repower Specialists LTD

### Repower Specialists Ltd.

Phone: (800) 700-9501

Web: [www.repowerspecialists.com](http://www.repowerspecialists.com)

eMail: [rick.huber@repower.com](mailto:rick.huber@repower.com)

Repower Specialists provides new engines and bolt-in engine installation kits. All of our kits come with customer support throughout the installation process. We replace obsolete engines such as Onan, Kohler K-series and Kohler Magnums with a new Kohler, Honda, or Vanguard engines.

- Engine Kits
- Engines (new)



### Schaeffers Specialized Lubricants

Phone: (800) 325-9962

Web: [www.schaefferoil.com](http://www.schaefferoil.com)

eMail: [chepler@schaefferoil.com](mailto:chepler@schaefferoil.com)

Founded in 1839, Schaeffers Specialized Lubricants is a sixth-generation, family-owned company that delivers the right solution to every lubrication challenge. Schaeffers products provide strong equipment durability and fuel economy benefits, allowing you to maximize your equipments efficiency and return on investment. Contact us to see how we've helped golf courses across the country manage resources and reduce their materials costs. [www.schaefferoil.com](http://www.schaefferoil.com) or 800-325-9962

- Batteries



### Turf Pride LLC

Phone: (334) 488-3939

Web: [www.turfprideusa.com](http://www.turfprideusa.com)

eMail: [tonyt@turfprideusa.com](mailto:tonyt@turfprideusa.com)

Turf Pride manufactures unique products with an approach that has brought many new innovations to the marketplace. With attention to quality, safety and dependable service, Turf Pride's mission is to manufacture and provide the turf industry with a line of reel and bedknife sharpeners, core collection accessories, deep tine aerator, de-thatchers, bedknives and replacement parts.

- Engines (new)
- Lapping Compounds

## Chemicals



### Arborjet, Inc.

Phone: (866) 272-6758

Web: [www.arborjet.com](http://www.arborjet.com)

eMail: [ajinformation@arborjet.com](mailto:ajinformation@arborjet.com)

Arborjets newest product, AzaSol, is a water soluble bio-insecticide applied as spray or soil drench to turf, trees, and shrubs. AzaSol contains azadirachtin derived using a new patented process to increase potency. Arborjet is also the world leader in tree injection technology.

- Biological Products
- Fertilizers
- Fungicides
- Insecticides
- Mosquito Control (natural)
- Pest Control

This  
Space  
Reserved  
For  
MATTER



## Chemicals



### Greenleaf Technologies

Phone: (800) 881-4832

Web: [www.turbodrop.com](http://www.turbodrop.com)

eMail: [sales@turbodrop.com](mailto:sales@turbodrop.com)

TurboDrop® nozzles are used on hundreds of golf courses to control drift and improve coverage. TurboDrop® nozzles eliminate the need for expensive shrouded booms, and can be easily retrofitted to any sprayer on the market.

- Chemical Spray Wear
- Fertilizers (foliar)
- Nematicides
- Wetting Agent Applicators



### Progressive Turf, LLC

Phone: (770) 479-5528

Web: [www.progressiveturf.com](http://www.progressiveturf.com)

eMail: [jackie@progressgrowerssupply.com](mailto:jackie@progressgrowerssupply.com)

- Fertilizers



### Soil Technologies Corp.

Phone: (800) 221-7645 ext.105

Web: [www.soiltechcorp.com](http://www.soiltechcorp.com)

eMail: [info@soiltechcorp.com](mailto:info@soiltechcorp.com)

Soil Technologies Corp. is a pioneer in the development of biological technologies that improve golf course turf. For over 30 years we have supplied our natural organic products to golf courses around the world. Soil Tech products include proprietary bio-fertilizers (Bio-Mega), soil conditioners (TurfTech Bio), nematode controls (Valoract), bio-fungicides (Bac-Pack), pest repellents (Garlic Gard), and wetting agents (Oasys Ultra). These specialty products have been field proven in thousands of golf course applications and are university tested for efficacy.

- Biological Products
- Biostimulants
- Green Mixes
- Nematicides

## Equipment



### Abell Turf & Tractor

Phone: (678) 296-0822

Web: [www.abellturfandtractor.com](http://www.abellturfandtractor.com)

eMail: [fabell@abellturfandtractor.com](mailto:fabell@abellturfandtractor.com)

Providing the industry with high quality used golf and turf equipment. Leasing and finance services available. Visit our website or call.

- Bunker Maintenance Equipment
- Curbing Equipment
- De-Icers

## Equipment



### ACCUProducts International

Phone: (800) 253-2112

Web: [www.accuproducts.com](http://www.accuproducts.com)

eMail: [info@accuproducts.com](mailto:info@accuproducts.com)

ACCUProducts International specializes in the manufacturing of precision tools for golf course mowing equipment. Products like the ACCU-GAGE, GROOMER-GAGE, BENCH-PLATE, and other products are the standard of the industry for precision mower and verticutter set up. Other proprietary products include the SAND-COMB for use in filtering out debris from bunkers, WETTING-FORK for use in wetting localized dry spots on greens and a variety of other maintenance products that help golf course superintendents and mechanics provide the finest golf playing conditions.

- Blowers
- Specialty Tools

## Equipment

### AgriMetal

### AgriMetal Inc.

Phone: (819) -39-8-6883

Web: [www.agrimetal.com](http://www.agrimetal.com)

eMail: [info@agrimetal.com](mailto:info@agrimetal.com)

Founded in 1980, AgriMetal has become a leading manufacturer of turf maintenance equipment. In 1987, the arrival of the 360 leaf blower revolutionized golf course maintenance. 1989 brought the first Turf Sweeper/Vacuum. These units were so well built, many are still in use today. Aerification equipment was developed in the early 1990's as well as leaf blower models to fit several manufacturers front mount mowers. The new millennium brought products for maintaining golf course greens. AgriMetal's product development continues to research the market seeking niche products needed by turf professionals. Please contact us if we can help you in any way!

- Aerators - Soil
- Blowers
- Dethatchers
- Turf Equipment



### Arborjet, Inc.

Phone: (866) 272-6758

Web: [www.arborjet.com](http://www.arborjet.com)

eMail: [ajinformation@arborjet.com](mailto:ajinformation@arborjet.com)

Arborjet's newest product, AzaSol, is a water soluble bio-insecticide applied as spray or soil drench to turf, trees, and shrubs. AzaSol contains azadirachtin derived using a new patented process to increase potency. Arborjet is also the world leader in tree injection technology.

- Bunker Maintenance Equipment
- De-Icers
- Fertilization Equipment
- Flotation Tires
- Grass Planters
- Grinders
- Specialty Tools

## Equipment



### Buffalo Turbine LLC

Phone: (716) 592-2700

Web: [www.buffaloturbine.com](http://www.buffaloturbine.com)

eMail: [paul.syracuse@buffaloturbine.com](mailto:paul.syracuse@buffaloturbine.com)

For over 65 years, Buffalo Turbine has utilized Turbine Style Blowers for Spraying and Debris maintenance. Buffalo Turbine manufactures "High Volume, High Velocity" debris blowers for more applications and in more styles including Trailer or skid mount versions in Gasoline, and Diesel along with hydraulic and PTO powered debris blowers.

- Attachments
- Construction Equipment
- Drag Mat
- Hydromulchers
- Leaf Blowers
- Loaders
- Sprayers
- Topdressing Equipment



### Country Club Landscaping & Equipment Repair

Phone: (440) 235-2157

Web: [www.usedturfequipment.com](http://www.usedturfequipment.com)

eMail: [usedturfequipment@hotmail.com](mailto:usedturfequipment@hotmail.com)

Serving the Golf/Turf Industry with low cost reliable used equipment.

- Aerators - Soil
- Blowers
- Curbing Equipment
- Dethatchers
- Fertilizer Injection Equipment
- Rakes (landscape)
- Sprayers
- Turf Equipment
- Turf Equipment (used)



### Cutter Equipment Co.

Phone: (800) 596-8873

Web: [www.cutteronline.com](http://www.cutteronline.com)

eMail: [sales@cutteronline.com](mailto:sales@cutteronline.com)

Cutter Equipment Company provides quality pre-owned turf to the golf course and sports turf industry. Cutter is managed by a Certified Golf Course Superintendent (CGCA) with 24 years of experience. We have deep roots in the turf industry and want to grow with you.

- Aerators - Soil
- Curbing Equipment
- Dethatchers
- Turf Equipment
- Turf Equipment (used)

This  
Space  
Reserved  
For  
MATTER

## Equipment



### Dakota Peat & Equipment

Phone: (800) 424-3443

Web: [www.dakotapeat.com](http://www.dakotapeat.com)

eMail: [randy@dakotapeat.com](mailto:randy@dakotapeat.com)

Reduce your stress on your golf course, Demo Dakota Peat today. It is free, put a gallon bag on your worst spot on your worst green and call us in a week. Guaranteed! Spread light, heavy, wet or dry, nothing is easier to use or adjust than a Dakota Turf Tender. Period!

- Chain Saws
- Equipment
- Flotation Tires
- Hydromulchers
- Hydroseeding Components
- Lawn Tools (hand)
- Spreaders, Seeders & Topdressers



### Express Reel Grinding Inc.

Phone: (877) 912-7335

Web: [www.expressreel.com](http://www.expressreel.com)

eMail: [lee@expressreel.com](mailto:lee@expressreel.com)

Express Reel Grinding reconditions, repairs, and restores used equipment to OEM specifications, using only OEM parts-never an after-market look-alike. This insures proper performance, quality, and future ease of repair. With our inventory of used, reconditioned equipment items, we can help to supply your course during new grow-ins, so as not to damage your brand new equipment.

- Turf Equipment (used)

## Equipment



### Foley United

Phone: (800) 225-9810

Web: [www.foleyunited.com](http://www.foleyunited.com)

eMail: [jimletourneau@foleyunited.com](mailto:jimletourneau@foleyunited.com)

Foley United is the leading manufacturer of reel and bedknife grinding equipment. From the full automation of the AccuMaster to the manual 660 bedknife grinder, you can always count on Foley for the features you need each and every day. Whether quick touch-up spin grinding or a full refurbishment including relief, Foley completes your task with the ultimate in ease of use features and minimal effort from the operator. Foley United does it all!

- Equipment
- Grinders
- Sharpeners



### Futures Golf Equipment

Phone: (866) 331-6621

eMail: [futuresgolf@wk.net](mailto:futuresgolf@wk.net)

Quality Used Turf & Grounds Maintenance Equipment. WE TAKE CARE OF YOUR NEEDS. If you don't see it listed, give us a call, ...we probably have it!!!! Major Credit Cards Accepted.

- Aerators - Soil
- Construction Equipment
- Dethatchers
- Spreaders, Seeders & Topdressers



# SUPPLIER DIRECTORY

## Equipment



### Global Turf Equipment

Phone: (866) 588-3092

Web: [www.globalturfequipment.com](http://www.globalturfequipment.com)

eMail: [info@globalturfequipment.com](mailto:info@globalturfequipment.com)

Save your green... Go Global!

- Aerators - Soil
- Dethatchers
- Remanufacturers
- Spreaders, Seeders & Topdressers
- Sweepers (powered)
- Turf Equipment (used)



### Graden USA, Inc.

Phone: (804) 249-9950

Web: [www.gradenusa.com](http://www.gradenusa.com)

eMail: [michael@gradenusa.com](mailto:michael@gradenusa.com)

Manufacturers of fine turf equipment - VERTICUTTERS / DETHATCHERS, GREENS ROLLERS and our patented CONTOUR SAND INJECTION machine. We pride ourselves in quality manufacturing, superb durability, and unparalleled performance proven worldwide. Don't settle for anything less than Graden. See our website for a dealer location near you.

- Aerators - Soil
- Dethatchers
- Equipment
- Outdoor Power Equipment
- Spreaders, Seeders & Topdressers
- Sweepers (powered)
- Thatch-Removal

## Equipment



### Greenleaf Technologies

Phone: (800) 881-4832

Web: [www.turbodrop.com](http://www.turbodrop.com)

eMail: [sales@turbodrop.com](mailto:sales@turbodrop.com)

TurboDrop® nozzles are used on hundreds of golf courses to control drift and improve coverage. TurboDrop® nozzles eliminate the need for expensive shrouded booms, and can be easily retrofitted to any sprayer on the market.

- Curbing Equipment
- Dethatchers
- Hand Tools
- Sprayers
- Sprayers (accessories)
- Sprayers (parts)

## DID YOU KNOW?

Depression-era gangster John Dillinger survived a shootout with the FBI, escaped from jail with a wooden gun, robbed police stations, had plastic surgery to change his face and remove his finger prints, and led the government on a year-long chase that cost them four times the amount he had ever stolen

## Equipment



### Greenman Golf & Turf Solutions

Phone: (253) 333-3345

Web: [www.greenmangolfturf.com](http://www.greenmangolfturf.com)

eMail: [jim@greenmangolfturf.com](mailto:jim@greenmangolfturf.com)

Greenman has been producing and supplying commercial and residential turf care equipment for over 20 years. With a wide assortment of products including sprayers, mowers, verti-cutters, sweepers, sod cutters, rollers, trailers and pump stations, they have become an important part of maintaining top level golf courses and properties worldwide. Greenman Golf & Turf Solutions is a team of professionals with over 150 years of combined experience in the development, sales and technical service of outdoor power equipment and we are dedicated to delivering unique and high-quality outdoor products to the golf and turf care markets.

- De-Icers
- Grinders



### Greenville Turf & Tractor Inc.

Phone: (866) 485-8873

Web: [www.greenvilleturf.com](http://www.greenvilleturf.com)

eMail: [flemingo@aol.com](mailto:flemingo@aol.com)

- Dethatchers
- Turf Equipment (used)



### ITB Co., Inc.

Phone: (800) 866-1357

Web: [www.itbcoinc.com](http://www.itbcoinc.com)

Birchmeier Pro-Line Sprayers: Top of the line quality spray units for over 123 years. This unit has a durable external piston pump that is easy to grease. Brass spray valve with a 4" steel mesh strainer, adjustable straps and strong stainless steel base to keep the unit upright make this unit suited for a true professional. Excellent for herbicide and pesticide applications.

- Sprayers (backpack)

## Equipment



### Jerry Pate Turf & Irrigation

Phone: (404) 346-5340

Web: [www.jerrypate.com](http://www.jerrypate.com)

eMail: [mrobinson@jerrypate.com](mailto:mrobinson@jerrypate.com)

Jerry Pate Turf & Irrigation, Inc. specializes in offering quality, used mowers, golf cars and turf equipment to the commercial, industrial, golf and residential customers around the world.

- Construction Equipment
- Curbing Equipment
- Dethatchers
- Turf Equipment (used)



### John Deere Golf

Phone: (586) 226-8330

Web: [www.johndeerelandscapes.com](http://www.johndeerelandscapes.com)

eMail: [bbirdwell@johndeerelandscapes.com](mailto:bbirdwell@johndeerelandscapes.com)

- Dethatchers
- Turf Equipment

## Equipment



### LaCorte Equipment Inc

Phone: (631) 727-8700

Web: [www.lacorteequipment.com](http://www.lacorteequipment.com)

eMail: [sales@lacorteequipment.com](mailto:sales@lacorteequipment.com)

- Curbing Equipment
- Mower Equipment



### Land Pride

Phone: (888) 987-7433

Web: [www.landpride.com](http://www.landpride.com)

eMail: [lpsales@landpride.com](mailto:lpsales@landpride.com)

Land Pride's Solid Stand Overseeders are available in 48" & 72" widths. Blade spacing for creating a slit and stirring up the ground is available in 2" or 3" configurations. Designed for overseeding into existing turf, the seed can drop in a broadcast pattern or into slits.

- Aerators - Soil
- Attachments
- De-Icers

## Equipment



### Pomp's Tire Service

Phone: (800) 348-2396

Web: [www.pompstire.com](http://www.pompstire.com)

eMail: [sjones@pompstire.com](mailto:sjones@pompstire.com)

Golf Course Superintendents nationwide have proven that Pomp's Flotation Tires are essential during delicate operations: Top Dressing, Spraying, Mowing, Back Filling Traps, Aerating The large contact area of the flotation tire effectively distributes load over a broad area.

- Flotation Tires
- Hand Tools
- Loaders
- Log Splitters



### Power Planter, Inc.

Phone: (217) 379-2614

Web: [www.powerplanter.com](http://www.powerplanter.com)

eMail: [greg@powerplanter.com](mailto:greg@powerplanter.com)

Power Planter® manufactures hand-welded earth augers for home gardening, professional landscaping, DIY projects, pest control installation, and so much more. Our augers are 100% made in the USA, and each one includes an unconditional guarantee on parts, materials and craftsmanship.

- Power Tools

## DID YOU KNOW?

The average person walks the equivalent of five times around the world in a lifetime

It can take a photon 40,000 years to travel from the core of the sun to its surface, but only 8 minutes to travel the rest of the way to Earth

## Equipment



### Repower Specialists Ltd.

Phone: (800) 700-9501

Web: [www.repowerspecialists.com](http://www.repowerspecialists.com)

eMail: [rick.huber@repower.com](mailto:rick.huber@repower.com)

Repower Specialists provides new engines and bolt-in engine installation kits. All of our kits come with customer support throughout the installation process. We replace obsolete engines such as Onan, Kohler K-series and Kohler Magnums with a new Kohler, Honda, or Vanguard engines.

- Bunker Rake Repair
- De-Icers
- Dethatchers
- Engine Kits
- Mowers (repair)
- Turf Equipment (repair)



### Seago International

Phone: (800) 780-9889

Web: [www.seagousa.com](http://www.seagousa.com)

eMail: [sales@seagousa.com](mailto:sales@seagousa.com)

Seago International is the exclusive distributor of Air Force Hover Mowers (Two Models: F-19 and F-15). In addition, Seago is the distributor for the Americas for Atom Edgers, BowDry, , Masport Mowers , Spyker Spreaders and the three units of the Seago Attachment Group The PortaPump Junior, Hover Trimmer and the NEW Power Rotary Scissor head. For 30 years, Seago has spanned the globe to bring the finest specialized turf care equipment to the marketplace.



### Shearer Equipment

Phone: (330) 601-1088

Web: [www.shearerequipment.com](http://www.shearerequipment.com)

Shearer Equipment is a full line John Deere Dealer in North Central Ohio with locations in Wooster, Mansfield, Mount Vernon, Monroeville, Copley, Medina and North Royalton. Shearer Equipment also offers full service repair, parts and maintenance on agriculture equipment, lawn and garden equipment and, through a complete electric shop, can meet your equipment electrical service needs.

- Outdoor Power Equipment



### Smith's South Central Sales

Phone: (800) 551-8259

Web: [www.smithssc.com](http://www.smithssc.com)

eMail: [rsmith@smithssc.com](mailto:rsmith@smithssc.com)

- Sprayers (power)



## Equipment



### Turf Pride LLC

Phone: (334) 488-3939

Web: [www.turfprideusa.com](http://www.turfprideusa.com)

eMail: [tonyt@turfprideusa.com](mailto:tonyt@turfprideusa.com)

Turf Pride manufactures unique products with an approach that has brought many new innovations to the marketplace. With attention to quality, safety and dependable service, Turf Pride's mission is to manufacture and provide the turf industry with a line of reel and bedknife sharpeners, core collection accessories, deep tine aerator, de-thatchers, bedknives and replacement parts.

- Aerators - Soil
- Bed Knives
- Blades (rotary mower)
- Core collection accessory
- Dethatchers
- Equipment
- Replacement Parts
- Sharpeners



### TurfTime Equipment

Phone: (800) 201-1031

Web: [www.turftimeeq.com](http://www.turftimeeq.com)

eMail: [glenn@turftimeeq.com](mailto:glenn@turftimeeq.com)

- Aerators - Soil
- Grinders
- Topdressing Equipment



### Ugate Store

Phone: (716) 474-1911

Web: [www.ugatestore.com](http://www.ugatestore.com)

eMail: [sales@ugatestore.com](mailto:sales@ugatestore.com)

Are you looking to buy equipment? We have a huge selection of used golf and turf equipment. You can come test drive or pick up in person or we can deliver to your location. Do you have equipment to sell or trade? Whether you're a golf course superintendent ready to clear out a warehouse of equipment or looking to get paid cash for one or two pieces, give us a call, text, or email today.

- Turf Equipment (used)



### US Turf, Lawn & Landscape Equipment

Phone: (980) 354-7122

Web: <http://www.usturfequipment.com>

eMail: [daniel.smith@usturfequipment.com](mailto:daniel.smith@usturfequipment.com)

US Turf, Lawn & Landscape Equipment provides top quality, low-hour, pre-owned equipment for golf courses, athletic departments, parks & recreation, and many other athletic venues. Our inventory is acquired from off-lease contracts from the most exclusive golf courses around the nation. Our brands include Jacobsen, Toro, Mahindra, Ventrac and many other industry favorites. We also provide service and maintenance on equipment. Need to replace your outdated equipment? Contact Daniel Smith or Dino DeAngelis today 980-354-7122 or [www.usturfequipment.com](http://www.usturfequipment.com)!

- Turf Equipment (used)

## Equipment



### Wilger Inc.

Phone: (877) 968-7695

Web: [www.wilger.net](http://www.wilger.net)

eMail: [wilgeresc@netease.net](mailto:wilgeresc@netease.net)

Wilger manufactures COMBO-JET® spray tips. COMBO-RATE® and COMBO-JET® bodies, QNSST custom tube fitting systems, Boom End Flush Valves, Flow View ball flow indicators and other components. Users find the easy to use computerized tools like the TIP WIZARD® give detailed droplet size, drift potential and coverage information to help make selecting the right tip for each application to achieve the right results. Check out the TIP WIZARD® and other tools on the [www.wilger.net](http://www.wilger.net) website.

- Sprayers (accessories)
- Sprayers (parts)

## Irrigation



### Eljen Rockless Composite Drainage System

Phone: (303) 595-8722

Web: [www.eljen-drainage.com](http://www.eljen-drainage.com)

eMail: [mdi@integra.net](mailto:mdi@integra.net)

Eljen Prefabricated Rockless Composite Drainage Systems for fluids or gasses. The original first composite drainage system with over fifty (50) successful years of service. Systems for any size of project from 2" thru 60' deep and if specified pipe allowances 2" thru 48". Made In The USA

- Bunker Stabilization
- Drainage Equipment
- Drainage Systems & Supplies
- Greens, Fairway & Drainage Management
- Ground & Surface Water Management Services
- Irrigation (supplies)
- Irrigation Equipment & Supplies

## Golf Preservations Inc

### Golf Preservations Inc.

Phone: (606) 499-2732

Web: [www.golfpreservations.com](http://www.golfpreservations.com)

eMail: [golfpreservations@yahoo.com](mailto:golfpreservations@yahoo.com)

Greens drainage specialist since 2005, Golf Preservations, Inc. has been completing drainage projects on golf courses Nationwide. We specialize in green drainage however we also offer the best fairway drainage in the business. We offer a variety of specialty work from bunkers to tee boxes and building greens complexes. Contact us for your FREE QUOTE today!

- Greens, Fairway & Drainage Management
- Ground & Surface Water Management Services
- Groundwater Management

This  
Space  
Reserved  
  
**For  
YOU**

## Irrigation



### Greenleaf Technologies

Phone: (800) 881-4832

Web: [www.turbodrop.com](http://www.turbodrop.com)

eMail: [sales@turbodrop.com](mailto:sales@turbodrop.com)

TurboDrop® nozzles are used on hundreds of golf courses to control drift and improve coverage. TurboDrop nozzles eliminate the need for expensive shrouded booms, and can be easily retrofitted to any sprayer on the market.

- Flow Meters
- Irrigation Equipment & Supplies
- Spraying Nozzles and Accessories
- Water Recycling



### Head Edger Inc.

Phone: (912) 964-8368

Web: [www.headedger.com](http://www.headedger.com)

eMail: [bfrost@paperclipinc.com](mailto:bfrost@paperclipinc.com)

We are proud to say that Head-Edger helps maintain some of the most beautiful and manicured golf courses, state parks and other fine grounds around the world. Let us help you maintain your grounds visit us at [www.headedger.com](http://www.headedger.com) Head-Edger works hard to save you time and money.

- Irrigation Equipment & Repair



Quality Erosion Control Products

### Mat Incorporated

Phone: (888) 477-3028

Web: [www.matinc.biz](http://www.matinc.biz)

eMail: [matinc@matinc.biz](mailto:matinc@matinc.biz)

The Guard Line of erosion control products provides three premium choices when choosing a Fiber Reinforced Matrix, Bonded Fiber Matrix or Stabilized Mulch Matrix. All three products ensure soil protection while providing rapid seed germination over all types of terrains. Each Guard product has a history of proven success within the erosion control industry and are all derived from the original BFM, Soil Guard®. The Guard Line guarantees performance on slopes ranging from 6:1 to 1:1; product choice is based on slope gradient or project specification.

- Bunker Liners & Renovation
- Electronic Irrigation Control Repairs
- Erosion Controls

## Mowers



### Abell Turf & Tractor

Phone: (678) 296-0822

Web: [www.abellturfandtractor.com](http://www.abellturfandtractor.com)

eMail: [fabell@abellturfandtractor.com](mailto:fabell@abellturfandtractor.com)

Providing the industry with high quality used golf and turf equipment. Leasing and finance services available. Visit our website or call.

- Greensmowers
- Mowers
- Mowers (used & remanufactured)
- Rotary Mowers

## Mowers



### Colorado Golf & Turf Inc

Phone: (303) 761-3332

Web: [www.cologolfandturf.com](http://www.cologolfandturf.com)

eMail: [drew@cologolfandturf.com](mailto:drew@cologolfandturf.com)

Colorado Golf & Turf is the premier source for all of your Golf & Turf needs. Specializing in only the highest quality equipment, we sell and service Personal & Fleet Golf Cars, Turf Equipment, Electric Cars and Utility Vehicles in the Colorado Area.

- Mowers (used & remanufactured)



### Country Club Landscaping & Equipment Repair

Phone: (440) 235-2157

Web: [www.usedturfequipment.com](http://www.usedturfequipment.com)

eMail: [usedturfequipment@hotmail.com](mailto:usedturfequipment@hotmail.com)

Serving the Golf / Turf Industry with low cost reliable used equipment.

- Bunkers
- Greensmowers
- Mowers (used & remanufactured)



### Cutter Equipment Co.

Phone: (800) 596-8873

Web: [www.cutteronline.com](http://www.cutteronline.com)

eMail: [sales@cutteronline.com](mailto:sales@cutteronline.com)

Cutter Equipment Company provides quality pre-owned turf to the golf course and sports turf industry. Cutter is managed by a Certified Golf Course Superintendent (CGCA) with 24 years of experience. We have deep roots in the turf industry and want to grow with you.

- Greensmowers
- Mowers (used & remanufactured)
- Non-Rotary Mowers (golf greens)
- Rotary Mowers



### Global Turf Equipment

Phone: (866) 588-3092

Web: [www.globalturfequipment.com](http://www.globalturfequipment.com)

eMail: [info@globalturfequipment.com](mailto:info@globalturfequipment.com)

Save your green... Go Global!

- Mowers (used & remanufactured)
- Non-Rotary Mowers (golf greens)

## Market **NATIONALLY** with TRADES PLACE

Industry professionals know the one-stop shopping source for all their buying needs

- **The Trades.** This is your opportunity to put your company's products and services in the **professional's** buying reference guide - the magazine the decision makers keep on their desks. Take this opportunity to reach your targeted customers for much less!



# SUPPLIER DIRECTORY

## Mowers

### GREENMAN

#### Greenman Golf & Turf Solutions

Phone: (253) 333-3345

Web: [www.greenmangolfturf.com](http://www.greenmangolfturf.com)

eMail: [jim@greenmangolfturf.com](mailto:jim@greenmangolfturf.com)

Greenman has been producing and supplying commercial and residential turf care equipment for over 20 years. With a wide assortment of products including sprayers, mowers, verti-cutters, sweepers, sod cutters, rollers, trailers and pump stations, they have become an important part of maintaining top level golf courses and properties worldwide. Greenman Golf & Turf Solutions is a team of professionals with over 150 years of combined experience in the development, sales and technical service of outdoor power equipment and we are dedicated to delivering unique and high-quality outdoor products to the golf and turf care markets.

- Hover Mowers
- Mowers



#### Jerry Pate Turf & Irrigation

Phone: (404) 346-5340

Web: [www.jerrypate.com](http://www.jerrypate.com)

eMail: [mrobinson@jerrypate.com](mailto:mrobinson@jerrypate.com)

Jerry Pate Turf & Irrigation, Inc. specializes in offering quality, used mowers, golf cars and turf equipment to the commercial, industrial, golf and residential customers around the world.

- Greensmowers
- Mowers (used & remanufactured)
- Rotary Mowers



#### John Deere Golf

Phone: (586) 226-8330

Web: [www.johndeereLandscapes.com](http://www.johndeereLandscapes.com)

eMail: [bbirdwell@johndeereLandscapes.com](mailto:bbirdwell@johndeereLandscapes.com)

- Mowers (used & remanufactured)



#### Progressive Turf Equipment Inc.

Phone: (800) 668-8873

Web: [www.progressiveturfequip.com](http://www.progressiveturfequip.com)

eMail: [info@progressiveturfequip.com](mailto:info@progressiveturfequip.com)

- Mowers
- Rotary Mowers

T - TOGETHER  
E - EVERYONE  
A - ACHIEVES  
M - MORE

## Plants



#### Arboguard Tree Specialists

Phone: (704) 578-5662

Email: [bgemberling@arboguard.com](mailto:bgemberling@arboguard.com)

Arboguard Tree Specialist focuses on the Southeastern United States, primarily North Carolina, South Carolina, Georgia, Tennessee and Virginia, and provides maintenance and preservation services or procedures such as soil therapy, pest and disease management, pruning, cabling, bracing, lightning protection, removals and consulting. We specialize in golf course work and our clients include courses that annually host PGA Tournaments, plus major tournaments such as The Masters and The PGA Championship.

- Tree Care Equipment & Supplies



#### Dakota Peat & Equipment

Phone: (800) 424-3443

Web: [www.dakotapeat.com](http://www.dakotapeat.com)

eMail: [randy@dakotapeat.com](mailto:randy@dakotapeat.com)

Reduce your stress on your golf course, Demo Dakota Peat today. It is free, put a gallon bag on your worst spot on your worst green and call us in a week. Guaranteed! Spread light, heavy, wet or dry, nothing is easier to use or adjust than a Dakota Turf Tender. Period!

- Peat Moss
- Seedbed Preparation
- Soil Amendments
- Soil Blenders
- Topdressings
- Tree Care Equipment & Supplies



#### Divots, Inc.

Phone: (877) 604-0785

Web: <http://www.divotssand.com/>

eMail: [divots@windstream.net](mailto:divots@windstream.net)

- Sand (bunker)



#### Ernst Conservation Seeds

Phone: (800) 873-3321

Web: [www.ernstseed.com](http://www.ernstseed.com)

eMail: [sales@ernstseed.com](mailto:sales@ernstseed.com)

Largest distributor of native seed east of the Mississippi, from Canada to Florida! Native grasses and wildflowers lend fragrance, unique texture and form, season-long color, and yearly variation to your landscape or 'out-of-play' areas. We specialize in sites from uplands to wetlands, including bioengineering for riparian sites. Contact our sales staff now and see what a difference natives can make!

- Seed (native)

We're always working for you, the Golf Course Superintendent, our team of writers work diligently to bring you fresh ideas for you to enjoy.

## Ponds



#### Cuddeback Machining, Inc.

Phone: (585) 392-5889

Web: [www.cuddebackmachining.com](http://www.cuddebackmachining.com)

eMail: [Sales@cuddebackmachining.com](mailto:Sales@cuddebackmachining.com)

At Cuddeback Machining, we manufacture "The Yard Blade", a handy tool that is used to cut and drown cattails in ponds, ditches and lakes, while standing on shore. "The Yard Blade" can also be used to clean up day lily's and Hostas at the end of their growing season. "The Yard Blade" consists of hardened steel that attaches to any 1" pool style telescoping pole and comes with the option of a straight or serrated edge.

## Ponds



#### Aqua Control Water Features

Phone: (800) 377-0019

Web: [www.aquacontrol.com](http://www.aquacontrol.com)

eMail: [info@aquacontrol.com](mailto:info@aquacontrol.com)

Aqua Control, Inc. (ACI) was found in 1970 as a manufacturer of Floating Aerators and Fountains. Our mission is to continually research & develop industry leading water features while providing our customers with the highest quality customer service & technical support in the industry through company teamwork, knowledge & education. This mission is built off of our dedication to promoting the health & appreciation of Earth™s most precious resource, water.



#### US Aqua Vac Inc.

Phone: (866) 989-6825

Web: [www.usaquavac.com](http://www.usaquavac.com)

eMail: [info@usaquavac.com](mailto:info@usaquavac.com)

At U.S. Aqua Vac Inc, we perform lake and pond cleaning services nationwide. U.S. Aqua Vac sediment removal specializes in removing muck, sludge, and silt from large or small lakes and ponds of golf courses all over. We continue to lead the industry in lake / pond cleaning services and restoration across the U.S. With happy customers all over the nation, let U.S. Aqua Vac pond cleaning services help you restore your waterway today! 866-989-6825

## Professionals



#### Abell Turf & Tractor

Phone: (678) 296-0822

Web: [www.abellturfandtractor.com](http://www.abellturfandtractor.com)

eMail: [fabell@abellturfandtractor.com](mailto:fabell@abellturfandtractor.com)

Providing the industry with high quality used golf and turf equipment. Leasing and finance services available. Visit our website or call.

## Professionals



#### Earth Networks

Phone: (800) 544-4429

Web: [www.earthnetworks.com](http://www.earthnetworks.com)

eMail: [malberghini@earthnetworks.com](mailto:malberghini@earthnetworks.com)

Earth Networks helps golf superintendents prepare for and protect their courses from severe weather, resulting in improved property management including turf treatment and irrigation. Our professional-grade WEATHER STATIONS reduce costs, optimize water management systems and provide highly accurate on-site precipitation data. Our WEB-BASED MONITORING, VISUALIZATION and ALERTING platform shows you current weather conditions in one intuitive and easy to use interface.

## Professionals



#### J. D. Hart & Associates

Phone: (316) 253-7493

Web: [www.jdhartgolfcoursedesign.com](http://www.jdhartgolfcoursedesign.com)

eMail: [jdhart5252@hotmail.com](mailto:jdhart5252@hotmail.com)

JD Hart & Associates provides design & construction of golf courses for private developers. Redesign, Reconfigure, and Renovate existing traditional golf courses. Aesthetic, objective and practical vision is our specialty. Consulting on management style is another area in which we can be of assistance. 40 years of experience relating to all phases of golf course operations. Private golf retreats are our specialty in the minimalist style of golf course architecture. [jdhartgolfdesign.com](http://jdhartgolfdesign.com) and [jdhartgolfcoursedesign.com](http://jdhartgolfcoursedesign.com)

- Golf Course Architecture
- Golf Course Design



#### Topp Shape Enterprises Inc.

Phone: (937) 470-5868

Web: [www.toppshape.com](http://www.toppshape.com)

eMail: [toppshape@gmail.com](mailto:toppshape@gmail.com)

From new construction to renovations, our goal at Topp Shape is to bring your vision to life, with a personal touch that is unrivaled. Our fleet of equipment, light and heavy, allows us to take on any job in any conditions. Guided by an experienced and dedicated staff, we will achieve your vision on time and on budget, built to championship standards.

## Structures



#### Fiesta Tents Ltd.

Phone: (800) 465-5070

Web: [www.fiesta.ca](http://www.fiesta.ca)

eMail: [info@fiesta.ca](mailto:info@fiesta.ca)

Fiesta Tents is a leading tent manufacturer offering models ranging from small 10' x 10' marquee tents to expandable 60'-wide clear span tent structures. Durability, ease of installation and versatility are the driving forces behind all of our products and designs. If you seek quality tents or marquees, Fiesta Tents has you covered!



#### Western Wood Structures, Inc.

Phone: (503) 692-6900

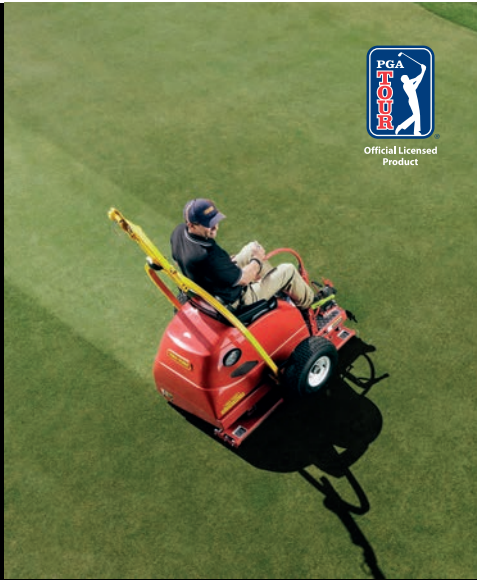
Web: [www.westernwoodstructures.com](http://www.westernwoodstructures.com)

eMail: [jagidius@westernwoodstructures.com](mailto:jagidius@westernwoodstructures.com)

Founded in May of 1969, WWSI is recognized industry leader in the design, supply, and installation of Glulam systems such as shelters, timber bridges, VARAX domes, and wood roof structures. Our staff of Experienced sales, engineering, and field personnel totals more than 400 years in the wood products Industry. A company committed to quality, WWSI merits your preferred consideration

This  
Space  
Reserved  
For  
YOU





SEE YOU AT GIS 2018 – BOOTH #26103



**You don't  
want to  
miss this.**  
#GameChanger

**NEW  
PRODUCT**

NEVER MISSES. NEVER CREASES. DESIGNED TO PERFECTION.

**TRU-TURF**

[www.truturf.com](http://www.truturf.com)



The Rolling Company

**FLEXSTAKE® FG**

1800.348.9839  
[www.flexstakegolf.com](http://www.flexstakegolf.com)



The Mow-Over Marker  
That Can Walk On  
Water & Be Cross-Cut  
On A Fairway



This is the ultimate in mow-over  
course marking stakes. Two O  
style rings on hinge seals dirt  
and water out of the anchor.  
Sealed stake floats if thrown  
in water hazard. Suitable for  
all course markings.

**FLEXSTAKE GOLF®**

**Consistent & Dependable Results  
Trusted for Over 40 Years.**

GIS  
Booth  
#12120

**WWW.WILGER.NET**

**COMBO-JET®**



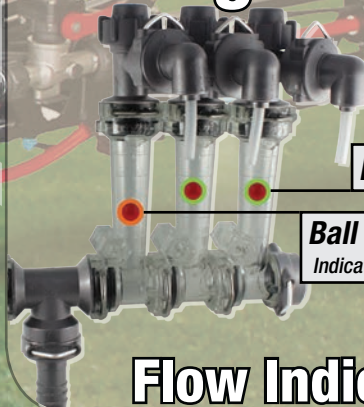
**Drift Reduction Tips**

**COMBO-RATE®**



**Nozzle Bodies**

**Wilger Visual**



**Easy to Use**  
**Desired Flow**

**Ball Suspended Lower**  
Indicates blockage or plug

**Flow Indicators**



Tip Wizard is the easiest way to choose the best spray tip.  
Download it on free smartphone app, or on [www.wilger.net](http://www.wilger.net)



**Wilger manufactures accurate, cost effective  
sprayer components that minimize waste and  
improve effectiveness.**

**Call Today**  
**(877) 968-7695**





*- A New Dimension in Signage  
- The Look of Distinction  
- Natural Beauty*

## Tee Signs



## Tee Markers



Custom Styles Available

## Cylex Rocks



## Totems



## Directional Signs



## Parks & Recreation



[www.cylexsigns.com](http://www.cylexsigns.com)

Browse hundreds of photos online

Scan To View



**Don't Miss Us At...**

**The Golf Industry Show  
San Antonio, Texas  
February 3rd - 8th 2018  
Booth #13060**

email: [info@cylexsigns.com](mailto:info@cylexsigns.com)







**1-800-969-0175**

**CALL US AND LET US  
HELP YOU FIND  
EVERYTHING YOU NEED!**

**CHECK OUT OUR NEW WEBSITE - CUTTERPARTSONLINE.COM**



## ENGINES

**Briggs & Stratton Vanguard 18HP Engine**

FITS VARIOUS MODELS

Cutter Part #: CNN0101-001

**\$1,295**



## HYDRAULICS

**Seal Kit**

Replaces Toro OEM part # 92-8863

Cutter Part #: CNN0508-001

**\$38.40**



## SEATS

**Grey High Back Seat**

FITS VARIOUS MODELS

Cutter Part #: CNN0603-001

**\$139**



## WATER PUMPS

**Kubota Water Pump**

Replaces Toro OEM part #'s 115-1561 and 107-0129

Cutter Part #: CNO0208-001

**\$159**



## HYDRAULICS

**Seal Kit**

Replaces Jacobsen OEM part # 557519

Cutter Part #: CNN0508-003

**\$99.75**



## REEL MOTORS

**Reel Motor**

Replaces Jacobsen OEM part #'s 4143249 and 123285

Cutter Part #: CNN0501-013

**\$249**



## WHEELS

**Flat Free 8" Smooth Tire & Wheel ASM**

Replaces Toro OEM part # 93-5974

Cutter Part #: CNN0801-001

**\$59.00**



## SERVICE

**Air Filter**

Replaces Toro OEM part #108-4260

Cutter Part #: C108-4260

**\$17.95**



## DRIVE TRAINS

**Planetary**

Replaces Toro OEM part #'s 104-4500 and 105-4500-03

Cutter Part #: CU105-4500

**\$995**



## ELECTRICAL

**Alternator**

Replaces Toro OEM part # 98-7693

Cutter Part #: CU98-7693

**\$199**



## ENGINE COMPONENTS

**Radiator**

Radiator fits Toro GM3500-D replaces OEM part # 99-3637

Cutter Part #: CU99-3637

**\$450**



## ENGINES

**Briggs & Stratton Vanguard 18HP Engine**

Fits various models

Cutter Part #: BR20145

**\$649**



## ENGINES

**Briggs & Stratton Daihatsu BM850D**

replaces Toro OEM part #'s 99-1481 and 117-9532

Cutter Part #: BR20027

**\$2,499**



## HYDRAULICS

**Lift Cylinder**

Replaces Jacobsen OEM part #'s 132525 and 4271777

Cutter Part #: CU132525

**\$105**



## CUTTING UNITS

**Deck Chamber Assembly**

Replaces Toro OEM part # 108-9021

Cutter Part #: CU108-9021

**\$560**



## WHEELS

**Wheel**

Replaces Toro OEM part # 95-3464

Cutter Part #: CU95-3464

**\$159**

- Belts, Spindles, & Pulleys
- Drive Train Components
- Tires, Wheels, & Casters

- Engine Components
- Electrical
- Engines

- Hydraulics
- Service Parts
- Frame & Body Parts

- Cutting Units
- MANY MORE AVAILABLE!**



# Ready... Willing... Abell Turf and Tractor



**Toro 3300 T**  
to choose, 2015 models with  
under 1000 hrs!



**Toro 3040 Sand Pro, Front  
Plow**, rear rake, new  
engine



**Toro 5800 Multipro Sprayer**  
with low hours!



**Metermatic IV Top Dresser**



**Toro 648 Aerator with new  
engine, fully refurbished**



**Late model AR-522**  
with Low hours!



**Late Model Toro 1250 Spray-  
ers... fully refurbished**



**Demo model Turfco  
Turbine Blower**



**Late Model Toro 3100-D's --  
8 to choose!**



**Agrimet TB-280 Turbine  
Blower...demo model!**



**Kubota L3200HST  
Tractor, 300 hrs!**



**John Deere 2030 Pro Gator,  
2WD, refurbished!**



**Late model Toro 5510's,  
some with 4WD**



**Seats for Sale!**  
only \$100 ea  
+ shipping

Fit's any Jacobsen, John Deere,  
or Toro machine and utility vehicle  
in the mfg.'s color (grey or yellow)



Arag Sprayer Valves -- for Toro, Jacobsen John  
Deere Sprayers! Much cheaper than OEM.

## Abell Turf Rents!

Toro 648's, Toro 1298 w/trac-  
tor, Fairway Verticutters, Mate-  
rial Handlers, Greens  
Rollers...and much much  
more!

Call for details!

## PARTS SPECIAL!

John Deere 1200A Carb -- \$155  
Best Starter prices around... Call to check pricing

John Deere Aercore 800 lift actuator direct replacement!!!  
Only \$325 each! Plug and play

Progressive Pro Flex PTO shafts complete!! Replaces #  
521738 ... \$560 plus shipping!

Progressive Pro Flex 120 complete blade sets!! Replaces  
# 522374 and 522372... \$85 plus shipping per set!

Pro Gator Radiator Fans!! Replaces# AM129853...  
\$175.00 plus shipping!

**TWO LOCATIONS TO SERVE!**  
Canton, GA • Loxahatchee, FL

Call Franklin Abell

**(678) 296-0822**

fabell@abellturf.com

**All major brands available**  
**We ship worldwide**  
**60 Day warranty on all purchases**

**www.AbellTurf.com**